

# Retired Onscreen Tests Version 4 Unit 8: The Performing Arts Industry

BTEC Firsts level 1/2

# Introduction



**This retired onscreen test has been made available to centres to help you prepare your learners for their BTEC Firsts Level 1/2 external assessments. We recommend that you use this test as a written assessment which is then either teacher marked or peer assessed. This retired test should be used in conjunction with the Mark Scheme and the Lead Examiner's Report to clearly identify the assessment requirements. These documents are available at:**

**<http://qualifications.pearson.com/en/qualifications/btec-firsts/performing-arts-2012-nqf.coursematerials.html>**

# Retired Test Development



We are currently working towards a simulation test where mock onscreen tests can be taken in a real environment. However as this is being developed, we have temporarily created these PowerPoint based tests to support you.

John Doe (12345678)

Test qualification

Unit 8: The Performing Arts Industry

Test reference: 21393E

Information for candidates

---



#### INSTRUCTIONS

- Answer all questions.
- Notes prepared before the assessment are not permitted in the test room.
- An onscreen notepad is provided for you to make notes during the test. These notes will not be marked.
- A scenario with additional information is available prior to questions 9-12 and 13-16. You can return to the scenario at any time during the related questions by selecting the scenario button within the test.

#### INFORMATION

- The assessment is 1 hour in duration.
- The total mark for this test is 50.
- The number of marks for each question is shown in brackets e.g. (2). Use this as a guide as to how much time to spend on each question.
- An accessibility panel is provided on every screen. This allows you to magnify your screen and apply a range of colour filters.

#### ADVICE

- Read each question carefully before you start to answer it.
- Keep an eye on the time.
- Try to answer every question.
- Check your answers if you have time at the end.

©2013 Pearson Education Ltd.

## Question 1/16



Which **one** of these is an example of a venue? (1)

Click on **one** of the boxes.

Touring performance company

Funding organisation

Receiving theatre

Service company

## Question 2/16



The Gate Theatre has a resident company.

(a) Which of these terms best describes this resident company? (1)

Click on **one** of the boxes.

Production

Transport

Receiving

Hire

Miriam works at The Gate Theatre as a wardrobe supervisor.

(b) Give **two** responsibilities Miriam will undertake during performances. (2)

Type your answers in the boxes.

## Question 3/16



This paragraph is an incomplete description of two companies, Fancy That Costumes! and Sold Out.

Complete the description. (3)

Drag and drop the correct words to complete the description.

Fancy That Costumes! is a [redacted] that provides costumes and has several outlets.

It supplies several organisations including Sold Out, which is a [redacted] that puts on shows in various venues around the country.

Sold Out also uses a [redacted] to deliver its set to venues.

transport company

funding body

hire company

receiving theatre

touring performance company

multi-use space

union

## Question 4/16



Which **two** of these are main responsibilities of an actor? (2)

Click on the **two** main responsibilities.

Calling cues

Attending rehearsals

Conducting scene changes

Auditioning

Undertaking sound checks



## Question 5/16



One example of a design role is a costume designer.

(a) Give **one** other example of a design role. (1)

Type your answer in the box.

One responsibility of a costume designer is to create drawings.

(b) Give **one** other responsibility of a costume designer. (1)

Type your answer in the box.

## Question 6/16



A local council gives financial support to a touring performance company, for its tour of 'Shades of Green'. It is touring local schools to educate children about the environment.

(a) State the type of funding organisation supporting this touring performance company. (1)

Type your answer in the box.

(b) Give **one** other type of funder who may fund this project. (1)

Type your answer in the box.

(c) Give **two** reasons why funders monitor the work they are funding. (2)

Type your answers in the boxes.

## Question 7/16



Here are descriptions of two different job roles undertaken in the performing arts industry.

Match each description to the correct job role. (2)

Click on each description and then the correct job role.

### Description

I attend band calls.  
I respond to direction.  
I regularly work with others.

I check equipment is in working order.  
I operate equipment during performances.  
I undertake risk assessments.

### Job role

Make-up artist

Musician

Sound technician

Director

Choreographer

## Question 8/16



The Empire Theatre is advertising for ushers and box office staff for its popular Christmas show.

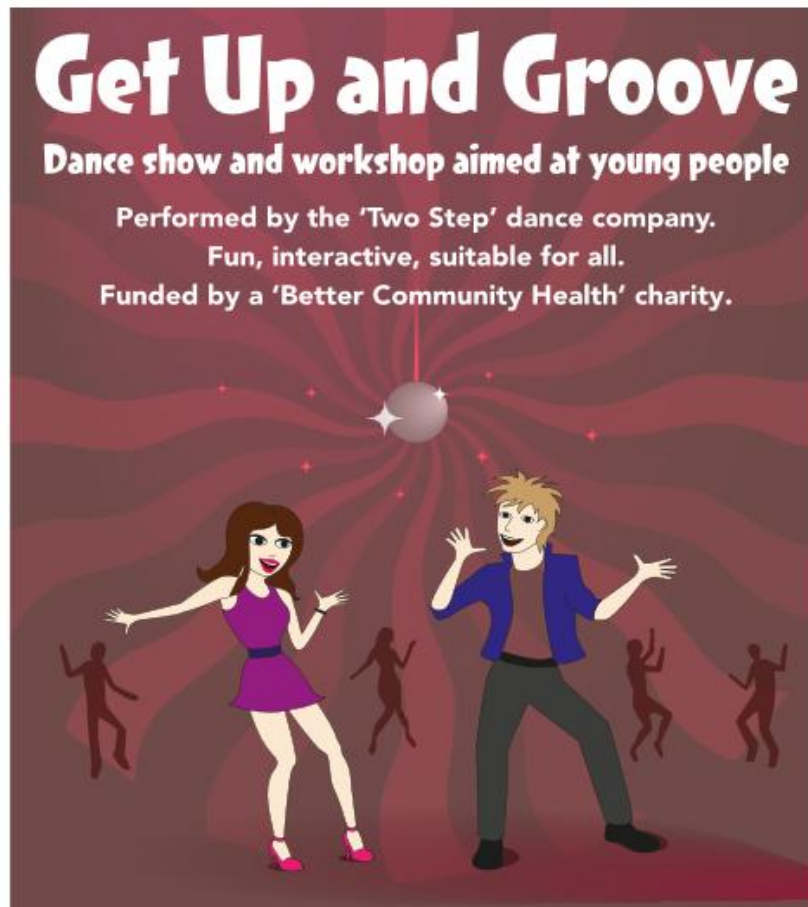
(a) Name the role that would be involved in interviewing for these jobs. (1)

Type your answer in the box.

(b) Explain **one** advantage to The Empire Theatre of employing casual staff for this production. (2)

Type your answer in the box.

# Scenario A



**Scenario A** should be used to answer questions 9-12.

Read scenario A carefully before beginning the questions.

## Scenario A

'Get Up and Groove' is a dance show and workshop tour, performed by the Two Step dance company.

The performance and workshop aim to promote healthy living amongst young people.

The work is funded by a well-known health charity.

## Question 9/16



Members of the Two Step dance company belong to a union.

(a) State the union the dancers are most likely to belong to. (1)

Type your answer in the box.

One responsibility of the dancers is performing dance in shows.

(b) State **one** other responsibility the dancers will regularly undertake whilst working for the Two Step dance company. (1)

Type your answer in the box.

(c) State **two** responsibilities of the choreographer when leading rehearsals for 'Get Up and Groove'. (2)

Type your answers in the boxes.

## Question 10/16



The charity funding 'Get Up and Groove' has its logo and website details on the publicity material.

Explain **one** reason why this is important to the Two Step dance company. (2)

Type your answer in the box.

# Question 11/16

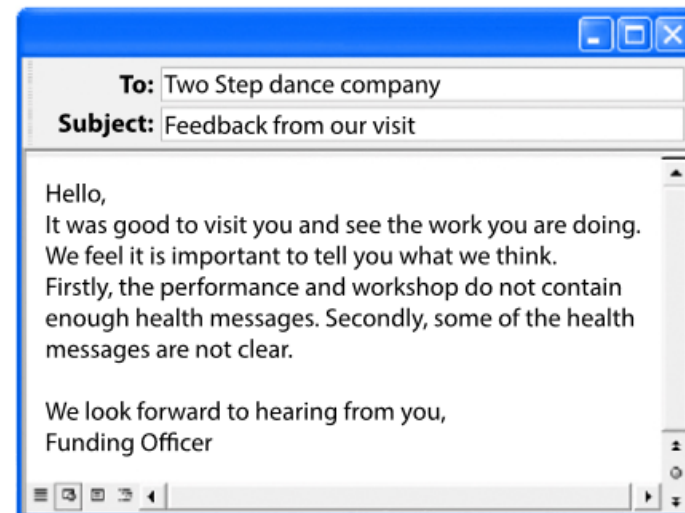


A few days before the 'Get Up and Groove' tour is due to start, the Two Step dance company receives the following email from the health charity.

The Two Step dance company must ensure the funder is satisfied. However, the changes are too complex and extensive to be made so close to the first performance.

Explain **two** options the Two Step dance company could take. (4)

Type your answer in the box.





## Question 12/16



The charity funding the 'Get Up and Groove' tour requires some specialist lighting equipment. This will be hired for the tour from a hire company rather than buying it themselves.

Explain **two** benefits of hiring this equipment. (4)


Type your answer in the box.

# Scenario B



**Scenario B** should be used to answer questions 13-16.

Read scenario B carefully before beginning the questions.

The scenario will be available on each question by clicking on the  button.

## Scenario B

The Have a Word Theatre In Education (T.I.E.) company is in the middle of a tour of its popular production of 'How do you do, Mr. Adjective?'. The performance is aimed at improving literacy at Key Stage 2.

There is a set that involves different doors and windows, which the performers use throughout the performance.

Projection is an important part of the show used to illustrate the literacy messages for the children in the audience by showing the words on slides.

The set, costumes and projection equipment, along with some hired lights, are being transported to the schools by a transport company.



**Holly**

Singer and actor



**Cory**

Technician



**Jenny**

Director



**Cian**

Stage manager

Click the back button to return to the test questions.

## Question 13/16



Which **two** of these are the responsibilities of Cory the technician during each get in? (2)

Click on the **two** correct responsibilities.

Rigging and focusing lights

Establishing lighting requirements

Setting props

Undertaking sound checks

De-rigging the equipment

## Question 14/16



Different roles have responsibilities that mean they must work with others.

(a) Explain **one** way in which the roles of Cory, the technician, and Cian, the stage manager, would interrelate during preparations for 'How do you do, Mr. Adjective?'. (2)

Type your answer in the box.

(b) Explain **one** way in which the roles of Holly, a singer and actor, and Jenny, the director, would interrelate during rehearsals for 'How do you do, Mr. Adjective?'. (2)

Type your answer in the box.

## Question 15/16



At the get in for a performance of 'How do you do, Mr. Adjective?', Cory the technician discovers that the projector is not working. It cannot be fixed or replaced prior to the performance.

Explain **one** action the performers could take in this situation. (2)

Type your answer in the box.

# Question 16/16

This photo story shows a conversation between Cian, the stage manager, and Jenny, the director, when members of the Have a Word T.I.E. company arrive at a school for a performance.

Discuss the advantages and disadvantages of the **two** options for the company. (8)

Type your answer in the box.

