

Retired Onscreen Test Version 9 Unit 1: The Online World

BTEC Firsts Level 1/2 Information and Creative Technology

Introduction



This retired onscreen test has been made available to centres to help you prepare your learners for their BTEC Firsts Level 1/2 external assessments.

We recommend that you use this test as a written assessment which is then either teacher marked or peer assessed.

This retired test should be used in conjunction with the Mark Scheme and the Lead Examiner's Report to clearly identify the assessment requirements. These documents are available at:

<https://qualifications.pearson.com/en/qualifications/btec-firsts/information-and-creative-technology-2012-nqf.coursematerials.html#filterQuery=Pearson-UK:Category%2FExternal-assessments>

Retired Test Development



We are currently working towards a simulation test where mock onscreen tests can be taken in a real environment. However as this is being developed, we have temporarily created these PowerPoint based tests to support you.

How can I view the videos in the test?

This document has been produced using screen captures of the retired onscreen test. As such, videos are not available in this PowerPoint document. This document should be used in conjunction with the retired onscreen test which is available on the

website:<https://qualifications.pearson.com/en/qualifications/btec-firsts/information-and-creative-technology-2012-nqf.coursematerials.html#filterQuery=Pearson-UK:Category%2FExternal-assessments>

How can I see the drop down menus in the test?

Where a drop down menu may obscure information the learner requires to answer a question, we have instead supplied a text box containing the options from the drop down menu. To view drop down menus please use the retired onscreen test.

Question 1/18

Identify **one** online service that schools use to support teaching and learning. (1)

Click on **one** of the boxes.

HTML

NAP

VLE

IMAP

Question 2/18

Identify **two** types of file permissions that can be used for documents. (2)

Click on the **two** correct file permissions.

Online/offline

Read only

Compression control

Read/write

Access only

Question 3/18



(a) State **one** data transmission method. (1)

Type your answer in the box.

(b) State **one** role of an Internet Service Provider (ISP). (1)

Type your answer in the box.

Question 4/18

(a) Identify **one** type of online storage. (1)

Click on **one** of the boxes.

Blog

Cloud

Podcast

Firewall

(b) Identify **one** benefit of using online storage. (1)

Click on **one** of the boxes.

Create queries

Create graphs

Share files

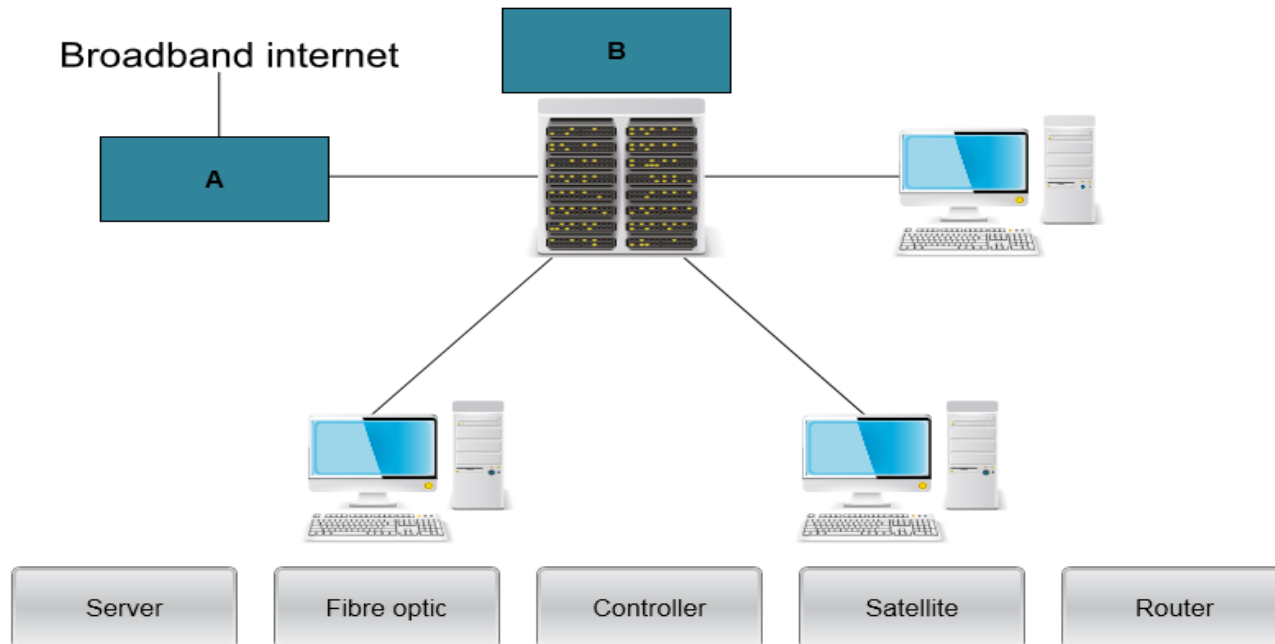
Monitor data

Question 5/18

The diagram shows a computer network.

Label components **A** and **B** in the computer network diagram. (2)

Drag and drop the **two** correct components onto the diagram.



Question 6/18



Identify **two** types of online services used by government. (2)

Click on the **two** correct online services.

Compression

Revenue collection

Password provision

Applications for services

Netiquette

Question 7/18



(a) State **two** email protocols. (2)

Type your answers in the boxes.

(b) State **two** drawbacks of using email. (2)

Type your answers in the boxes.

Question 8/18

Identify **one** component of an email address. (1)

Click on **one** of the boxes.

Address name

User name

File name

Path name

Question 9/18



E-voting is an online service that the government uses.

Explain **one** reason why the government uses e-voting. (2)

Type your answer in the box.

Question 10/18

Identify **two** types of damage to data stored online. (2)

Click on the **two** correct types of damage.

Accidental

Identity

Malicious

Permitted

Client

Question 11/18



Identify **two** key terms used in online communication. (2)

Click on the **two** correct key terms.

Upgrading

Chat

Database

Training

Netiquette

Question 12/18



Talik creates a website.
He uses client-side processing for rollover images.

Explain **two** disadvantages of Talik using client-side processing for rollover images in his website. (4)

Type your answer in the box.

Question 13/18



Identify **two** features of an online radio player. (2)

Click on the **two** correct features.

Can listen to programmes after first broadcast

Allows access to Voice over Internet Protocol

Provides access to operating system upgrades

Can create newsgroups

Can be accessed on a variety of devices

Question 14/18



Pay-per-click is a method used to advertise a business online.
One disadvantage of pay-per-click advertising is that it can be expensive.

Explain **two** disadvantages, other than cost, of using pay-per-click as an online advertising method. (4)

Type your answer in the box.

Question 15/18



Parallel and serial transmission are ways of transmitting data across a network. They transmit data at different speeds.

(a) Explain **one** drawback, other than speed, of using parallel transmission to transmit data. (2)

Type your answer in the box.

(b) Explain **one** drawback, other than speed, of using serial transmission to transmit data. (2)

Type your answer in the box.

Question 16/18



(a) Explain how a firewall prevents unauthorised access to a computer system. (2)

Type your answer in the box.

(b) Explain how a computer system checks that a password has been entered correctly. (2)

Type your answer in the box.

Question 17/18



Explain **one** way software can support backup procedures. (2)

Type your answer in the box.

Question 18/18



Wheelie Wheels is a company that sells cars.
Sales staff and customers need to access the internet to find cars for sale and to process orders.
Wheelie Wheels has decided to use broadband for its internet connection.

Discuss the factors the company should consider before choosing a broadband connection. (8)

Type your answer in the box.