

Retired Onscreen Test Version 10 Unit 1: The Online World

BTEC Firsts Level 1/2 Information and Creative Technology

Introduction



This retired onscreen test has been made available to centres to help you prepare your learners for their BTEC Firsts Level 1/2 external assessments.

We recommend that you use this test as a written assessment which is then either teacher marked or peer assessed.

This retired test should be used in conjunction with the Mark Scheme and the Lead Examiner's Report to clearly identify the assessment requirements. These documents are available at:

<https://qualifications.pearson.com/en/qualifications/btec-firsts/information-and-creative-technology-2012-nqf.coursematerials.html#filterQuery=Pearson-UK:Category%2FExternal-assessments>

Retired Test Development



We are currently working towards a simulation test where mock onscreen tests can be taken in a real environment. However as this is being developed, we have temporarily created these PowerPoint based tests to support you.

How can I view the videos in the test?

This document has been produced using screen captures of the retired onscreen test. As such, videos are not available in this PowerPoint document. This document should be used in conjunction with the retired onscreen test which is available on the website:

<https://qualifications.pearson.com/en/qualifications/btec-firsts/information-and-creative-technology-2012-nqf.coursematerials.html#filterQuery=Pearson-UK:Category%2FExternal-assessments>

How can I see the drop down menus in the test?

Where a drop down menu may obscure information the learner requires to answer a question, we have instead supplied a text box containing the options from the drop down menu. To view drop down menus please use the retired onscreen test.

Question 1/18



Identify the data type used to store a person's name in a database. (1)

Click on **one** of the boxes.

Currency

Number

Yes/No

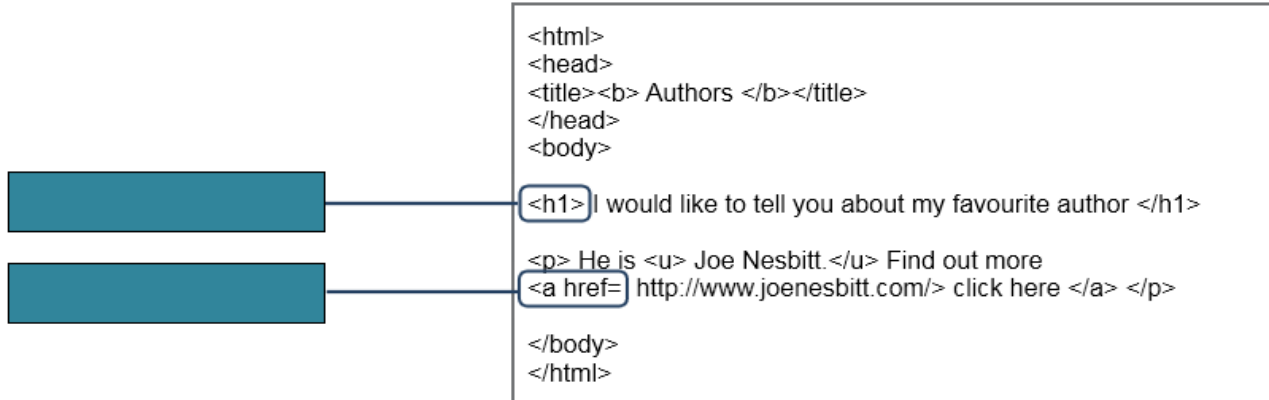
Text

Question 2/18

HyperText Markup Language (HTML) is used to create web pages.

Label the **two** HTML tags. (2)

Drag and drop the correct labels into the boxes.



```
<html>
<head>
<title><b> Authors </b></title>
</head>
<body>
<h1>I would like to tell you about my favourite author </h1>
<p> He is <u> Joe Nesbitt.</u> Find out more
<a href= http://www.joenesbitt.com/> click here </a> </p>
</body>
</html>
```

Paragraph

Heading

Bold

Hyperlink

Underline

Question 3/18



(a) Name **one** component of a Uniform Resource Locator (URL). (1)

Type your answer in the box.

(b) Identify **one** function of a Uniform Resource Locator (URL). (1)

Type your answer in the box.

Question 4/18

(a) Identify **one** file extension that shows a file has been compressed. (1)

Click on **one** of the boxes.

.pub

.doc

.zip

.xls

(b) Which **one** of these is used in file compression? (1)

Click on **one** of the boxes.

Formula

Algorithm

Query

Permission

Question 5/18

Identify **two** components of a web page. (2)

Click on the **two** correct components.

Trailer

Router

Banner

Menu

Domain

Question 6/18

Each image shows a communication device.

Match the device to the transmission mode. (2)

Click on each device and then the correct transmission mode.

Device

Remote control



Smart phone



Transmission mode

Serial

Duplex

Parallel

Half duplex

Simplex

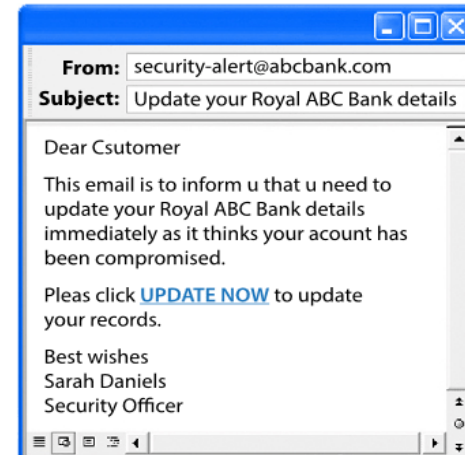
Question 7/18

(a) Identify **two** security measures taken to protect data. (2)

Type your answers in the boxes.

(b) Identify **two** features that indicate this is a phishing email. (2)

Type your answers in the boxes



Question 8/18

A database is an organised collection of data.

Which key is used to uniquely identify a record in a database? (1)

Click on **one** of the boxes.

Foreign key

Secondary key

Primary key

Encryption key

Question 9/18



A school encourages learners to use social media in the classroom.
Learners use blogs, wikis and forums to communicate with teachers and other learners.

Explain **one** benefit to learners of using social media to communicate in the classroom. (2)

Type your answer in the box.

Question 10/18



Identify **two** benefits of instant messaging. (2)

Click on the **two** correct benefits.

Can create a chat room

Accessible without a network connection

Reduces risk of viruses

Messages are sent in real time

Secure method of communication

Question 11/18

Two uses of online services are shown.

Match each use with the online service. (2)

Click on each use and then the correct online service.

Use

Applications
for grants

Internet banking

Online service

Virtual Learning Environment

Download services

Entertainment

Government

Commerce

Question 12/18



Packet switching is a method of sending data over a network.

(a) Explain **one** benefit of using packet switching when sending data over a network. (2)

Type your answer in the box.

(b) Explain **one** drawback of using packet switching when sending data over a network. (2)

Type your answer in the box.

Question 13/18

Search engines use various components.

Match each component to its role. (2)

Click on each component and then the correct role.

Component

Web crawler

Web index

Role

Collects a database of web pages

Enables connection to the internet services

Identifies the address of a web page

Allows websites to be accessible

Follows every link in a website

Question 14/18



(a) Explain **one** advantage of using online software to create documents. (2)

Type your answer in the box.

(b) Explain **one** disadvantage of using online software to create documents. (2)

Type your answer in the box.

Question 15/18



Being able to access an email account whenever there is internet access is one advantage of using webmail.

(a) Explain **one** other advantage of using webmail. (2)

Type your answer in the box.

Webmail cannot be accessed offline.

(b) Explain **one** other drawback of using webmail. (2)

Type your answer in the box.

Question 16/18

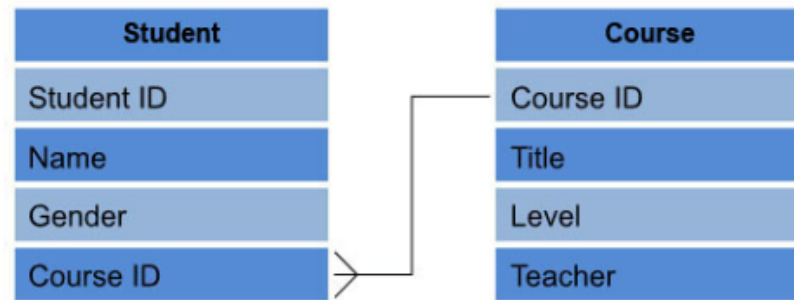


Explain **two** advantages to the user when a website uses client-side processing. (4)

Type your answer in the box.

Question 17/18

The relationship between two tables in a database is shown.



Explain **one** reason why the course data table needs to be created **before** the student data table. (2)

Type your answer in the box.

Question 18/18



Cassie has an online sportswear business.
She is considering using social networking to promote her business.

Discuss the implications of using a social networking site to promote Cassie's business. (8)

Type your answer in the box.