

Downloading and Installing the Sample Test Player/Viewing the Test Packages

Introduction:

The Sample test player is used to run all Onscreen SAM's or Practice tests that will be running on the Pearson Onscreen Platform (POP).

The packages you view in the sample test player will reflect what a live test looks like. The player also contains the same functionality as the LIVE test player.

Installation Guide:

The sample test player can be installed once on standalone PCs or via your centre network (Please liaise with your IT Technician).

Firewall:

The firewall is controlled by the IT Department or whoever looks after the network. The IT Technician should be able to install the standalone application onto each PC or via the Server.

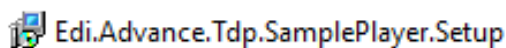
Admin Rights:

If you do not have Full Admin Rights to install or download, please refer the installation/ Downloads to the IT Technician.

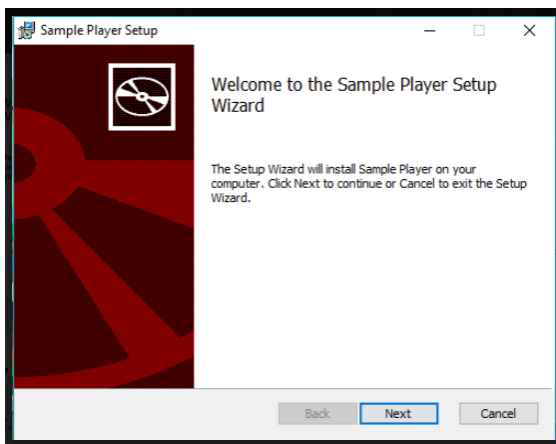
STEPS:

1. Download TDP Sample TestPplayer which can be found via this link
<https://btecng.pearson.com/btecng/Demo/Edi.Advance.Tdp.SamplePlayer.Setup.msi>

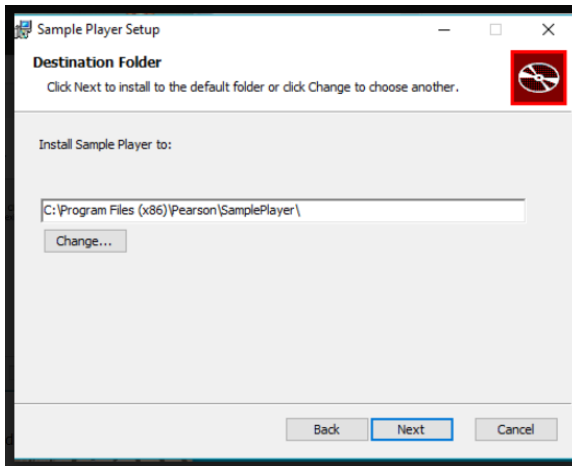
2. Double click on the downloaded file.



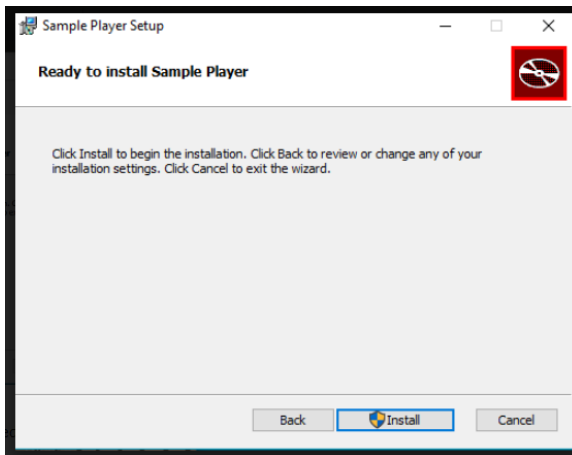
3. Sample Player Setup Wizard appears, Click Next.



4. Destination Folder appears, Click Next.
(The wizard will automatically select your local drive and save a folder called 'Pearson' in the drive).
Note: If you want to down onto your centre network, please liaise with your IT Technician).



5. Ready to Install Sample Player screen appears, Click Install.
It will take less than a minute to install.



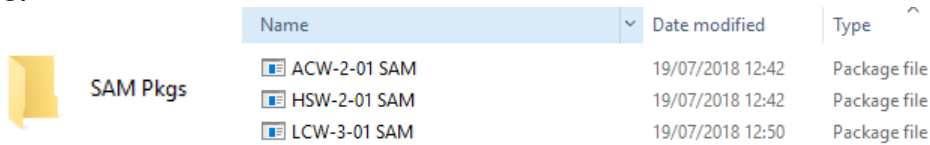
Once the installation is completed the setup screen will disappear. (There will be no icon on desktop), this means that You have now installed the Sample Test Player.

To test whether the Sample Test Player works, You will now be able to view any SAMs package provided to you from Pearson.

Viewing the Test packages:

Please drop the packages into a folder on the desktop. This will enable the users to help themselves to the SAMs.

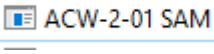
i.e.



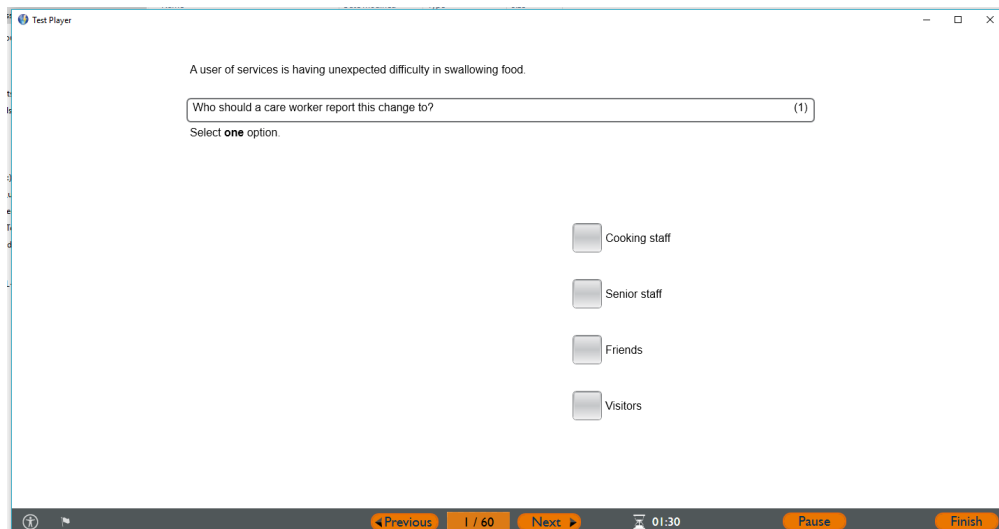
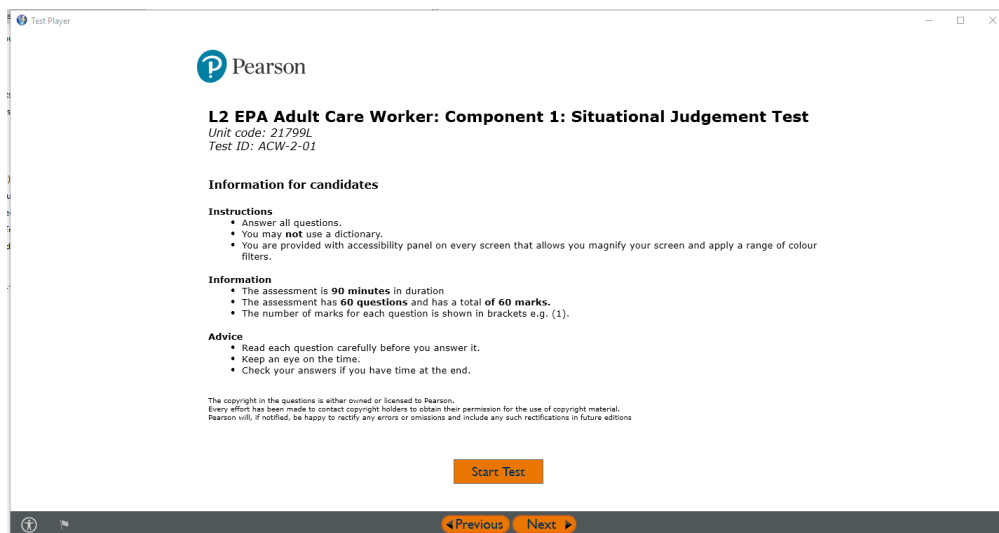
Name	Date modified	Type
ACW-2-01 SAM	19/07/2018 12:42	Package file
HSW-2-01 SAM	19/07/2018 12:42	Package file
LCW-3-01 SAM	19/07/2018 12:50	Package file

STEPS:

1. To view the tests, all you need to do is to double click on a pkg.

i.e. 

Within a few seconds the front screen of the test will appear.
Click on start test and you should see the first question.



2. Answer the questions. You can pause the test.
If you do you will see the screen below:



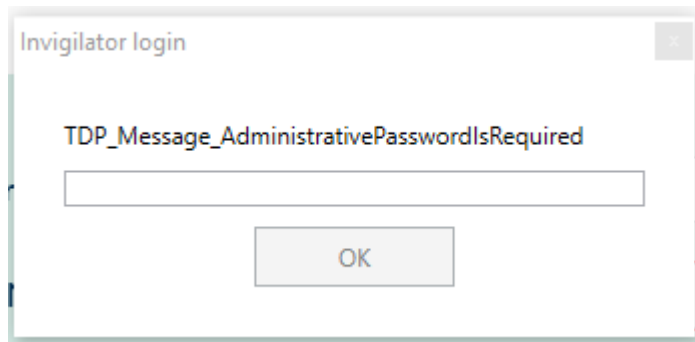
Welcome to Pearson
Online Assessments

A light green rectangular form with rounded corners. It contains two input fields: 'Learner Number' and 'Order Number', each with a red border. Below the fields is a small 'OK' button.

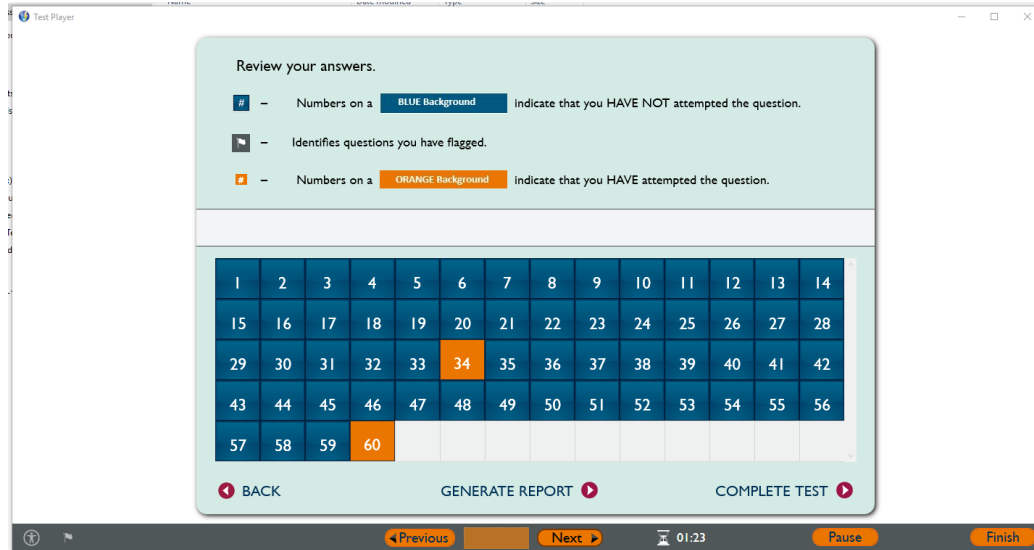
Please enter your candidate
details to begin

There is no Learner or Order number for the sample test player test:
To go back to the test: You will need to on the keyboard select: Shift ALT F12. This will bring up
the screen below:

Please type in **secret1** and Click OK, you should now be back in the test.



3. Once you get to the last question, Click Next, you should now see the question grid, this is where you can review your answers.



Or

If you don't want to review answers you can generate a report where it shows you what was answered correctly (auto marked questions value = 1 or incorrectly (value of 0).

The report will take a minute to appear on your screen, it will contain the marks obtained and screenshots of the candidate's answers. You can save this PDF report.

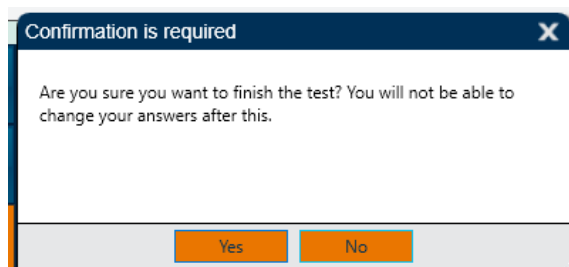
NOTE 1: There will be no marks for text only answers, these questions are manually marked by EPEN. For the purpose of the sample test, please refer to the mark scheme.


NOTE 2:

The report will only be available instantly from the Sample Test Player. There is **NO** instant score report when you sit a LIVE test on POP.

If a score report is available for a live test, it can be previewed/downloadable from Edexcel Online (EOL), the system that provides support at every stage of the qualification cycle.

4. To end the test, Click on Complete Test', the below pop up appears. Click Yes.



5. You should now see the Test Player front screen. Click on the  to close the front screen.

