

Pearson Edexcel Level 3 GCE

Monday 20 May 2024

Afternoon (Time: 3 hours)

Paper
reference

9HT0/01

History of Art

Advanced

PAPER 1: Visual analysis and themes

Question Booklet

Do not return this Booklet with the Answer Booklet.

Turn over ►

P74200A

©2024 Pearson Education Ltd.

F:1/1/1/1/1



P 7 4 2 0 0 A



Pearson

BLANK PAGE



SECTION A: VISUAL ANALYSIS

Answer ALL questions. Write your answers in the answer booklet.

1 Study Figure 1 below.

Discuss the figure and the setting in this portrait **and** consider the artist's depiction of texture, pattern and ornamentation.

(Total for Question 1 = 12 marks)

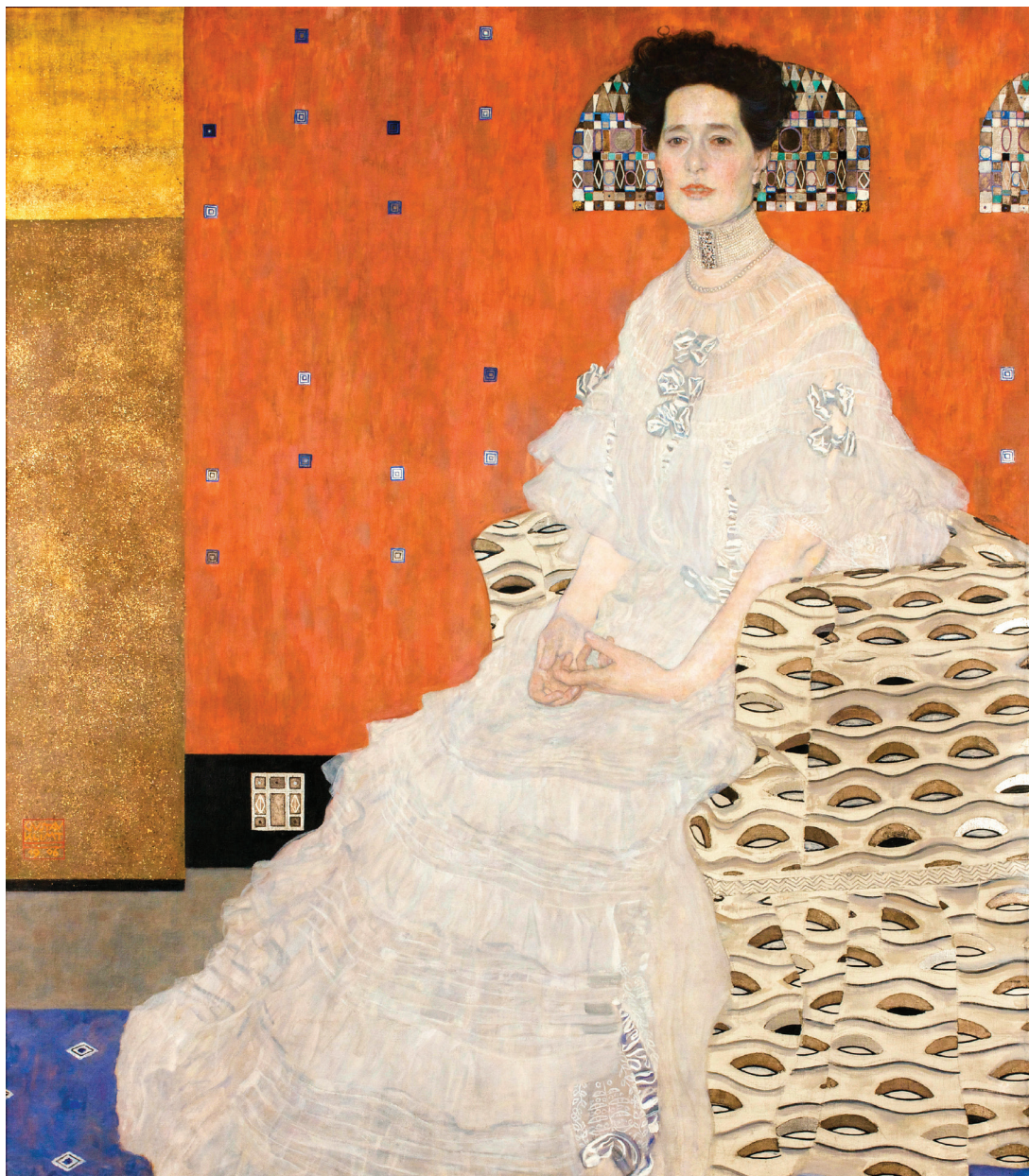


Figure 1: Gustav Klimt, *Portrait of Fritza Riedler*, 1906, oil on canvas, 153 x 133 cm (Belvedere, Vienna)

BLANK PAGE



2 Study Figure 2 below.

Discuss the form and composition of this sculpture **and** consider how the sculptor has made use of the material and technique.

(Total for Question 2 = 12 marks)



Figure 2: Benvenuto Cellini, *Perseus*, 1545–54, bronze, height of figure 320 cm (Loggia dei Lanzi, Florence)

BLANK PAGE



3 Study Figure 3 below.

Discuss the design and composition of this building **and** consider how the architectural features express its importance.

(Total for Question 3 = 12 marks)



Figure 3: *Beauvais Cathedral*, 1225 onwards, stone and glass, (Beauvais, France)

TOTAL FOR SECTION A = 36 MARKS

SECTION B: THEMES

**Answer parts (a) AND (b) of the TWO questions for which you have been prepared.
Write your answers in the answer booklet.**

Question 4: Nature in art and architecture

- 4** (a) Explore how plants have been depicted in **two** works of art. One must have been produced pre-1850 **and** one post-1850. (12)
- (b) 'Works of art and architecture produced beyond the European tradition are more effective in responding to nature than those produced within it.'

How far do you agree with this statement? To support your answer you must refer to:

- named works of art/architecture
- your specified artist(s)/architect
- your critical text(s).

(25)

(Total for Question 4 = 37 marks)

Question 5: Identities in art and architecture

- 5** (a) Explore how identity is expressed in **two** 3D portraits. One must have been produced pre-1850 **and** one post-1850. (12)
- (b) 'Patronage is the most important factor in understanding works of art and architecture concerned with identity.'

How far do you agree with this statement? To support your answer you must refer to:

- named works of art/architecture
- your specified artist(s)/architect
- your critical text(s).

(25)

(Total for Question 5 = 37 marks)



Question 6: War in art and architecture

- 6 (a) Explore the significance and meaning of **two** works of architecture associated with war.

At least **one** of your examples must have been produced from beyond the European tradition.

(12)

- (b) 'Accurate representation of a conflict can never capture the horror of war.'

How far do you agree with this statement? To support your answer you must refer to:

- named works of art/architecture
- your specified artist(s)/architect
- your critical text(s).

(25)

(Total for Question 6 = 37 marks)

TOTAL FOR SECTION B = 74 MARKS
TOTAL FOR PAPER = 110 MARKS

BLANK PAGE



BLANK PAGE



Acknowledgements

Figure 1: incamerastock / Alamy Stock Photo

Figure 2: Peter Barritt / Alamy Stock Photo

Figure 3: Jordan Zhelev / Alamy Stock Photo



Please check the examination details below before entering your candidate information

Candidate surname

Other names

Centre Number

Candidate Number

Pearson Edexcel Level 3 GCE

Monday 20 May 2024

Afternoon (Time: 3 hours)

Paper
reference

9HT0/01

History of Art

Advanced

PAPER 1: Visual analysis and themes

You must have:

Question Booklet (enclosed)

Total Marks

Instructions

- Use **black** ink or ball-point pen.
- **Fill in the boxes** at the top of this page with your name, centre number and candidate number.
- Answer **ALL** questions in Section A.
- In Section B, answer parts (a) and (b) of the **TWO** questions for which you have been prepared.
- In Section B, you must identify all the works of art and architecture that you refer to by giving the name of the artist and the title of the work. If the artist is unknown or if the title is insufficient for identifying the specific work, you must give the location and date of the work.
- Answer the questions in the spaces provided
– *there may be more space than you need.*

Information

- The total mark for this paper is 110.
- The marks for **each** question are shown in brackets
– *use this as a guide as to how much time to spend on each question.*

Advice

- Read each question carefully before you start to answer it.
- Check your answers if you have time at the end.

Turn over ►

P74200A

©2024 Pearson Education Ltd.

F:1/1/1/1/1




Pearson

SECTION A
VISUAL ANALYSIS

Answer ALL questions. Write your answers in the spaces provided.

Question 1

(12)

Area with horizontal dotted lines for writing answers.

DO NOT WRITE IN THIS AREA

DO NOT WRITE IN THIS AREA

DO NOT WRITE IN THIS AREA



DO NOT WRITE IN THIS AREA

DO NOT WRITE IN THIS AREA

DO NOT WRITE IN THIS AREA

(Total for Question 1 = 12 marks)



P 7 4 2 0 0 A 0 3 2 8

Question 2

(12)

Area with horizontal dotted lines for writing the answer to Question 2.

DO NOT WRITE IN THIS AREA

DO NOT WRITE IN THIS AREA

DO NOT WRITE IN THIS AREA



DO NOT WRITE IN THIS AREA

DO NOT WRITE IN THIS AREA

DO NOT WRITE IN THIS AREA

(Total for Question 2 = 12 marks)



P 7 4 2 0 0 A 0 5 2 8

Question 3

(12)

Area with horizontal dotted lines for writing the answer to Question 3.

DO NOT WRITE IN THIS AREA

DO NOT WRITE IN THIS AREA

DO NOT WRITE IN THIS AREA



DO NOT WRITE IN THIS AREA

DO NOT WRITE IN THIS AREA

DO NOT WRITE IN THIS AREA

(Total for Question 3 = 12 marks)

TOTAL FOR SECTION A = 36 MARKS



P 7 4 2 0 0 A 0 7 2 8

DO NOT WRITE IN THIS AREA

DO NOT WRITE IN THIS AREA

DO NOT WRITE IN THIS AREA

Handwriting practice area with 20 horizontal dotted lines.



DO NOT WRITE IN THIS AREA

DO NOT WRITE IN THIS AREA

DO NOT WRITE IN THIS AREA

Handwriting practice area with 20 horizontal dotted lines.



Part (b)

(25)

DO NOT WRITE IN THIS AREA

DO NOT WRITE IN THIS AREA

DO NOT WRITE IN THIS AREA

Area with horizontal dotted lines for writing.



DO NOT WRITE IN THIS AREA

DO NOT WRITE IN THIS AREA

DO NOT WRITE IN THIS AREA

Handwriting practice area with 20 horizontal dotted lines.



DO NOT WRITE IN THIS AREA

DO NOT WRITE IN THIS AREA

DO NOT WRITE IN THIS AREA

Handwriting practice area with 20 horizontal dotted lines.



P 7 4 2 0 0 A 0 1 3 2 8

DO NOT WRITE IN THIS AREA

DO NOT WRITE IN THIS AREA

DO NOT WRITE IN THIS AREA

Handwriting practice area with 20 horizontal dotted lines.



DO NOT WRITE IN THIS AREA

DO NOT WRITE IN THIS AREA

DO NOT WRITE IN THIS AREA

Handwriting practice area with 20 horizontal dotted lines.



P 7 4 2 0 0 A 0 1 5 2 8

DO NOT WRITE IN THIS AREA

DO NOT WRITE IN THIS AREA

DO NOT WRITE IN THIS AREA

(Total for Question = 37 marks)



DO NOT WRITE IN THIS AREA

DO NOT WRITE IN THIS AREA

DO NOT WRITE IN THIS AREA

Answer parts (a) and (b) of your SECOND chosen question here.

You must identify all works of art and architecture that you refer to by giving the name of the artist and the title of the work. If the artist is unknown or if the title is insufficient for identifying the specific work, you must give the location and date of the work.

Indicate which question you are answering by marking a cross in the box ☒. If you change your mind, put a line through the box ☒ and then indicate your new question with a cross ☒.

Chosen question number:

Question 4: Nature in art and architecture

Question 5: Identities in art and architecture

Question 6: War in art and architecture

Part (a)

(12)

Area with horizontal dotted lines for writing the answer.



DO NOT WRITE IN THIS AREA

DO NOT WRITE IN THIS AREA

DO NOT WRITE IN THIS AREA

Handwriting practice area with 20 horizontal dotted lines.



DO NOT WRITE IN THIS AREA

DO NOT WRITE IN THIS AREA

DO NOT WRITE IN THIS AREA

Handwriting practice area with 20 horizontal dotted lines.



P 7 4 2 0 0 A 0 1 9 2 8

Part (b)

(25)

DO NOT WRITE IN THIS AREA

DO NOT WRITE IN THIS AREA

DO NOT WRITE IN THIS AREA

Area with horizontal dotted lines for writing.



DO NOT WRITE IN THIS AREA

DO NOT WRITE IN THIS AREA

DO NOT WRITE IN THIS AREA

Handwriting practice area with 20 horizontal dotted lines.



DO NOT WRITE IN THIS AREA

DO NOT WRITE IN THIS AREA

DO NOT WRITE IN THIS AREA

Handwriting practice area with 20 horizontal dotted lines.



DO NOT WRITE IN THIS AREA

DO NOT WRITE IN THIS AREA

DO NOT WRITE IN THIS AREA

Handwriting practice area with 20 horizontal dotted lines.



P 7 4 2 0 0 A 0 2 3 2 8

DO NOT WRITE IN THIS AREA

DO NOT WRITE IN THIS AREA

DO NOT WRITE IN THIS AREA

Handwriting practice area with 20 horizontal dotted lines.



DO NOT WRITE IN THIS AREA

DO NOT WRITE IN THIS AREA

DO NOT WRITE IN THIS AREA

Handwriting practice area with horizontal dotted lines.

(Total for Question = 37 marks)

TOTAL FOR SECTION B = 74 MARKS
TOTAL FOR PAPER = 110 MARKS



P 7 4 2 0 0 A 0 2 5 2 8

DO NOT WRITE IN THIS AREA

DO NOT WRITE IN THIS AREA

DO NOT WRITE IN THIS AREA

BLANK PAGE



DO NOT WRITE IN THIS AREA

DO NOT WRITE IN THIS AREA

DO NOT WRITE IN THIS AREA

BLANK PAGE



DO NOT WRITE IN THIS AREA

DO NOT WRITE IN THIS AREA

DO NOT WRITE IN THIS AREA

BLANK PAGE

