

Please check the examination details below before entering your candidate information

Candidate surname

Other names

**Pearson Edexcel
Level 3 GCE**

Centre Number

--	--	--	--	--

Candidate Number

--	--	--	--	--

Thursday 4 June 2020

Afternoon (Time: 2 hours 15 minutes)

Paper Reference **9GE0/02**

Geography

Advanced

Paper 2

You must have:

Resource Booklet (enclosed)

Calculator, ruler

Total Marks

Instructions

- Use **black** ink or ball-point pen.
- **Fill in the boxes** at the top of this page with your name, centre number and candidate number.
- Answer **all** questions in Section A.
- Answer **one** question in Section B and **one** question in Section C.
- Answer the questions in the spaces provided
– *there may be more space than you need.*
- Calculators may be used.
- Any **calculations** must show **all** stages of **working out** and a **clear answer**.

Information

- The total mark for this paper is 105.
- The marks for **each** question are shown in brackets
– *use this as a guide as to how much time to spend on each question.*

Advice

- Read each question carefully before you start to answer it.
- Check your answers if you have time at the end.

Turn over ►

P62635A

©2020 Pearson Education Ltd.

1/1/1/1/1/1/1/1/e2




Pearson

SECTION A: GLOBALISATION / SUPERPOWERS

Answer ALL questions in this section. Write your answers in the spaces provided.

1 Study Figure 1 below.

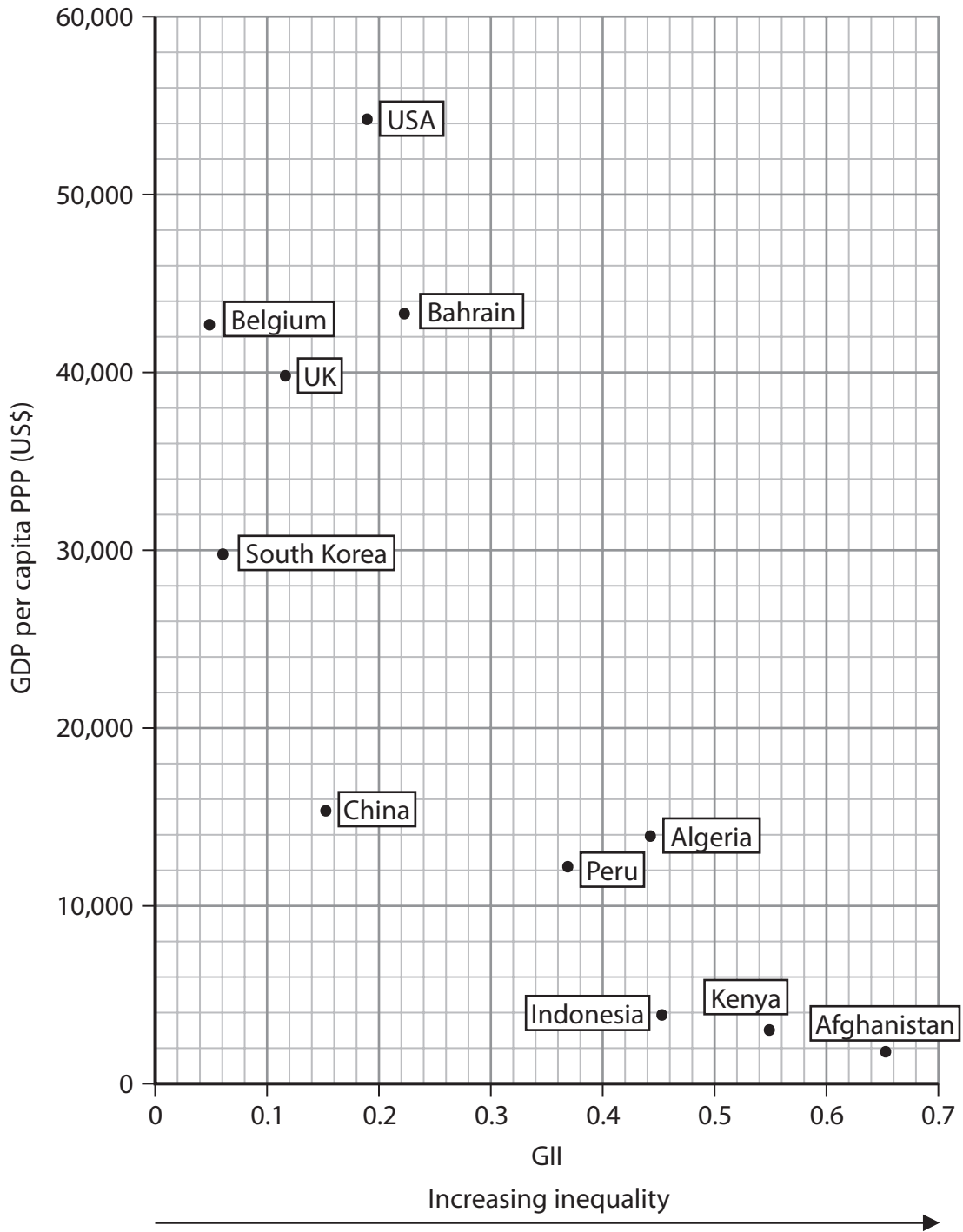


Figure 1

Gross Domestic Product (GDP) per capita at Purchasing Power Parity (PPP) and Gender Inequality Index (GII) for selected countries in 2018

DO NOT WRITE IN THIS AREA

DO NOT WRITE IN THIS AREA

DO NOT WRITE IN THIS AREA



- (a) (i) Complete Figure 2 below by adding the GII and GDP data for China from Figure 1. (2)

States	GI	GDP per capita (PPP) (\$)
Afghanistan	0.65	1800
China		

Figure 2
Data table

- (ii) Calculate the range for the GI data for the countries shown in Figure 1. (1)

Answer:

- (iii) Draw the line of best fit on Figure 1. (1)



DO NOT WRITE IN THIS AREA

DO NOT WRITE IN THIS AREA

DO NOT WRITE IN THIS AREA

(Total for Question 1 = 16 marks)



2 (a) Explain **one** effect on key resources, such as oil, from rising middle-class consumption in emerging superpowers.

(4)

.....

.....

.....

.....

.....

.....

.....

.....

DO NOT WRITE IN THIS AREA

DO NOT WRITE IN THIS AREA

DO NOT WRITE IN THIS AREA



(b) Assess the role of TNCs in developing the economic importance of superpowers.

(12)

DO NOT WRITE IN THIS AREA

DO NOT WRITE IN THIS AREA

DO NOT WRITE IN THIS AREA

A large rectangular area containing numerous horizontal dotted lines for writing.



DO NOT WRITE IN THIS AREA

DO NOT WRITE IN THIS AREA

DO NOT WRITE IN THIS AREA

(Total for Question 2 = 16 marks)

TOTAL FOR SECTION A = 32 MARKS



DO NOT WRITE IN THIS AREA

DO NOT WRITE IN THIS AREA

DO NOT WRITE IN THIS AREA

SECTION B: SHAPING PLACES

Answer ONE question in this section – EITHER Question 3 OR Question 4.

Indicate which question you are answering by marking a cross . If you change your mind, put a line through the box and then indicate your new question with a cross .

If you answer Question 3 put a cross in this box .

Regenerating Places

You must use the Resource Booklet provided.

3 (a) Study Figure 3 in the Resource Booklet.

(i) Suggest **one** reason why the unemployment rates for Hartlepool have varied.

(3)

.....

.....

.....

.....

.....

.....



(b) Explain how international and global influences have shaped the social characteristics of your local place.

(6)

Name of local place:

DO NOT WRITE IN THIS AREA

DO NOT WRITE IN THIS AREA

DO NOT WRITE IN THIS AREA



P 6 2 6 3 5 A 0 1 1 4 0

(c) Evaluate the view that successful regeneration always relies on changing the perceptions of an area.

(20)

Area with horizontal dotted lines for writing.

DO NOT WRITE IN THIS AREA

DO NOT WRITE IN THIS AREA

DO NOT WRITE IN THIS AREA



DO NOT WRITE IN THIS AREA

DO NOT WRITE IN THIS AREA

DO NOT WRITE IN THIS AREA

Handwriting practice area with 20 sets of horizontal dotted lines.



DO NOT WRITE IN THIS AREA

DO NOT WRITE IN THIS AREA

DO NOT WRITE IN THIS AREA

Handwriting practice area with 20 horizontal dotted lines.



DO NOT WRITE IN THIS AREA

DO NOT WRITE IN THIS AREA

DO NOT WRITE IN THIS AREA

(Total for Question 3 = 35 marks)



P 6 2 6 3 5 A 0 1 5 4 0

Do not answer Question 4 if you have answered Question 3

If you answer Question 4 put a cross in this box .

Diverse Places

You must use the Resource Booklet provided.

4 Study Figures 4a and 4b in the Resource Booklet.

(a) (i) Suggest **one** reason why the population structures of Newcastle-upon-Tyne and Northumberland differ.

(3)

.....

.....

.....

.....

.....

.....

.....

DO NOT WRITE IN THIS AREA

DO NOT WRITE IN THIS AREA

DO NOT WRITE IN THIS AREA



(ii) Suggest reasons for the different levels of cultural diversity between Newcastle-upon-Tyne and Northumberland.

(6)

DO NOT WRITE IN THIS AREA

DO NOT WRITE IN THIS AREA

DO NOT WRITE IN THIS AREA

Area with horizontal dotted lines for writing.



(c) Evaluate why stakeholders in diverse communities use different criteria for measuring the success of managing change.

(20)

DO NOT WRITE IN THIS AREA

DO NOT WRITE IN THIS AREA

DO NOT WRITE IN THIS AREA

Area with horizontal dotted lines for writing.



DO NOT WRITE IN THIS AREA

DO NOT WRITE IN THIS AREA

DO NOT WRITE IN THIS AREA

Handwriting practice area with 20 horizontal dotted lines.



DO NOT WRITE IN THIS AREA

DO NOT WRITE IN THIS AREA

DO NOT WRITE IN THIS AREA

Handwriting practice area with 20 horizontal dotted lines.



DO NOT WRITE IN THIS AREA

DO NOT WRITE IN THIS AREA

DO NOT WRITE IN THIS AREA

(Total for Question 4 = 35 marks)

TOTAL FOR SECTION B = 35 MARKS



SECTION C: GLOBAL DEVELOPMENT AND CONNECTIONS

Answer ONE question in this section – EITHER Question 5 OR Question 6.

Indicate which question you are answering by marking a cross . If you change your mind, put a line through the box and then indicate your new question with a cross .

If you answer Question 5 put a cross in this box .

Health, Human Rights and Intervention

You must use the Resource Booklet provided.

5 (a) Explain how the Geneva Convention attempts to protect human rights.

(4)

.....

.....

.....

.....

.....

.....

.....

.....

.....

.....

DO NOT WRITE IN THIS AREA



Study Figure 5 in the Resource Booklet.

(b) Explain why some regions have experienced more rapid rates of increase in life expectancy than others.

(6)

Area with horizontal dotted lines for writing the answer.

DO NOT WRITE IN THIS AREA

DO NOT WRITE IN THIS AREA

DO NOT WRITE IN THIS AREA



(c) Explain why some International Governmental Organisations (IGOs) have promoted neo-liberal market and trade policies for economic development.

(8)

DO NOT WRITE IN THIS AREA

DO NOT WRITE IN THIS AREA

DO NOT WRITE IN THIS AREA

Area with horizontal dotted lines for writing.



DO NOT WRITE IN THIS AREA

DO NOT WRITE IN THIS AREA

DO NOT WRITE IN THIS AREA

Handwriting practice area with seven horizontal dotted lines.



(d) Evaluate the extent to which military interventions are effective in reducing human rights abuses.

(20)

DO NOT WRITE IN THIS AREA

DO NOT WRITE IN THIS AREA

DO NOT WRITE IN THIS AREA

Area with horizontal dotted lines for writing.



P 6 2 6 3 5 A 0 2 7 4 0

DO NOT WRITE IN THIS AREA

DO NOT WRITE IN THIS AREA

DO NOT WRITE IN THIS AREA

Handwriting practice area with 20 horizontal dotted lines.



DO NOT WRITE IN THIS AREA

DO NOT WRITE IN THIS AREA

DO NOT WRITE IN THIS AREA

Handwriting practice area with 20 sets of horizontal dotted lines.



DO NOT WRITE IN THIS AREA

DO NOT WRITE IN THIS AREA

DO NOT WRITE IN THIS AREA

(Total for Question 5 = 38 marks)



Do not answer Question 6 if you have answered Question 5.

If you answer Question 6 put a cross in this box .

Migration, Identity and Sovereignty

You must use the Resource Booklet provided.

- 6** (a) Explain why the emergence of new nation states is often accompanied by conflict. (4)

.....

.....

.....

.....

.....

.....

.....

.....

.....

.....

DO NOT WRITE IN THIS AREA

DO NOT WRITE IN THIS AREA

DO NOT WRITE IN THIS AREA



Study Figure 6 in the Resource Booklet.

(b) Suggest reasons for the differences in the numbers of foreign-born population (international migrants) in the countries shown.

(6)

Area with horizontal dotted lines for writing.

DO NOT WRITE IN THIS AREA

DO NOT WRITE IN THIS AREA

DO NOT WRITE IN THIS AREA



(c) Explain why the opinions of governments and Non-Governmental Organisations (NGOs) about the growth of tax havens may differ.

(8)

DO NOT WRITE IN THIS AREA

DO NOT WRITE IN THIS AREA

DO NOT WRITE IN THIS AREA

Area with horizontal dotted lines for writing.



P 6 2 6 3 5 A 0 3 3 4 0

DO NOT WRITE IN THIS AREA

DO NOT WRITE IN THIS AREA

DO NOT WRITE IN THIS AREA

Handwriting practice area with ten horizontal dotted lines.



(d) Evaluate the extent to which the rise of nationalism can prevent globalisation.

(20)

DO NOT WRITE IN THIS AREA

DO NOT WRITE IN THIS AREA

DO NOT WRITE IN THIS AREA

A large rectangular area with rounded corners, containing numerous horizontal dotted lines for writing.



P 6 2 6 3 5 A 0 3 5 4 0

DO NOT WRITE IN THIS AREA

DO NOT WRITE IN THIS AREA

DO NOT WRITE IN THIS AREA

Handwriting practice area with 20 horizontal dotted lines.



DO NOT WRITE IN THIS AREA

DO NOT WRITE IN THIS AREA

DO NOT WRITE IN THIS AREA

Handwriting practice area with 20 sets of horizontal dotted lines.



DO NOT WRITE IN THIS AREA

DO NOT WRITE IN THIS AREA

DO NOT WRITE IN THIS AREA

(Total for Question 6 = 38 marks)

TOTAL FOR SECTION C = 38 MARKS

TOTAL FOR PAPER = 105 MARKS



DO NOT WRITE IN THIS AREA

DO NOT WRITE IN THIS AREA

DO NOT WRITE IN THIS AREA

BLANK PAGE



DO NOT WRITE IN THIS AREA

DO NOT WRITE IN THIS AREA

DO NOT WRITE IN THIS AREA

BLANK PAGE



Pearson Edexcel Level 3 GCE

Thursday 4 June 2020

Afternoon (Time: 2 hours 15 minutes)

Paper Reference **9GE0/02**

Geography

Advanced

Paper 2

Resource Booklet

Do not return this Resource Booklet with the question paper.

Turn over ►

P62635A

©2020 Pearson Education Ltd.

1/1/1/1/1/1/1/1/e2



P 6 2 6 3 5 A



Pearson

BLANK PAGE

SECTION B

The following resource relates to Question 3(a).

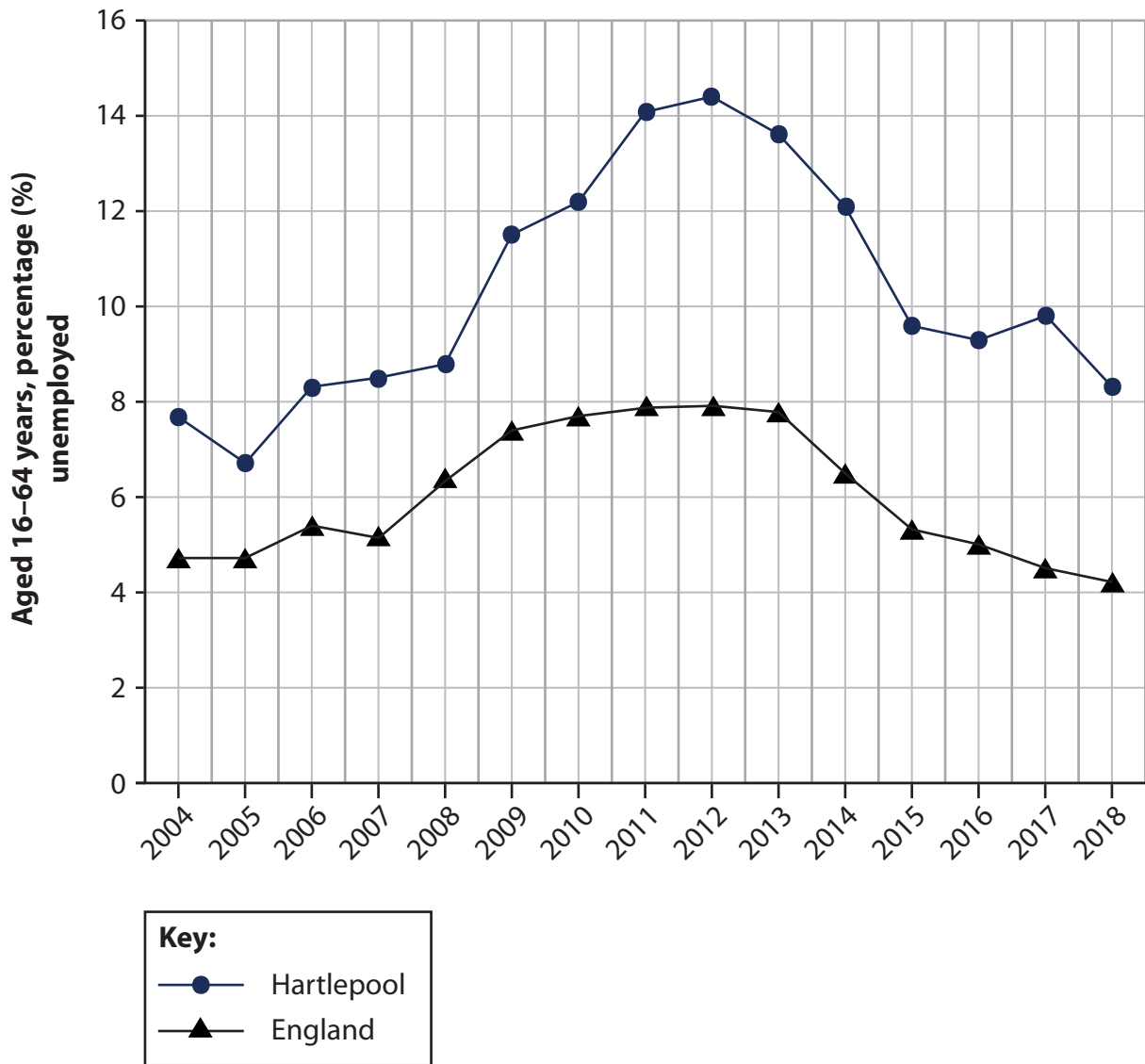


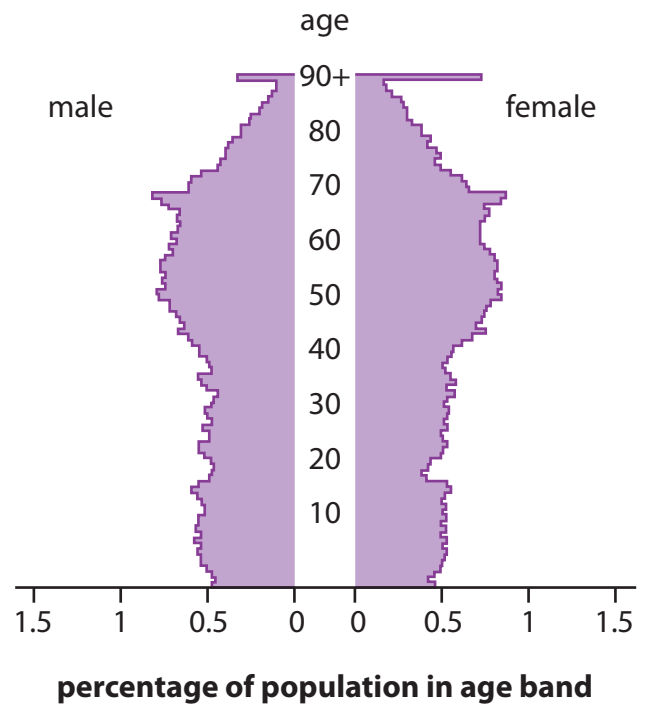
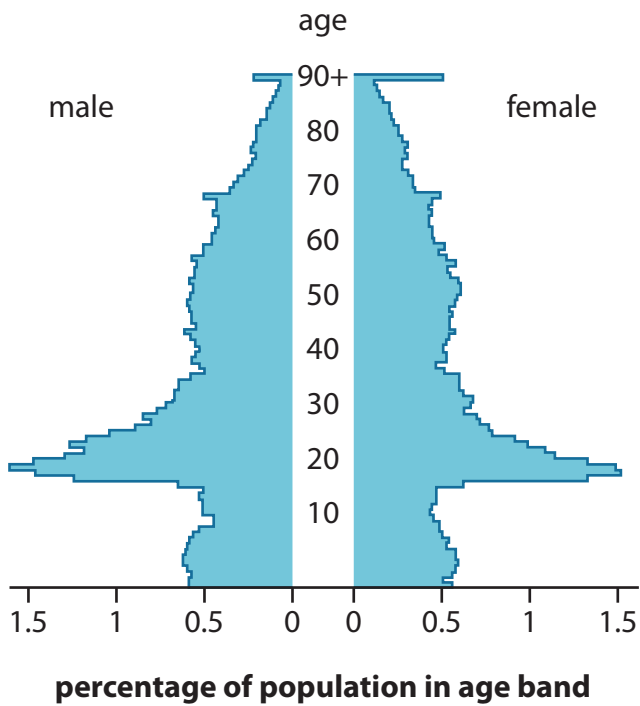
Figure 3

Changes in unemployment rates in Hartlepool (urban area in north-east England) and England between 2004 and 2018

The following resources relate to Question 4(a).

**Newcastle-upon-Tyne
(a university city)**

**Northumberland
(a largely rural county)**



**Non-UK born in
Newcastle-upon-Tyne**

17%

**Non-UK born in
Northumberland**

3%

Figure 4a

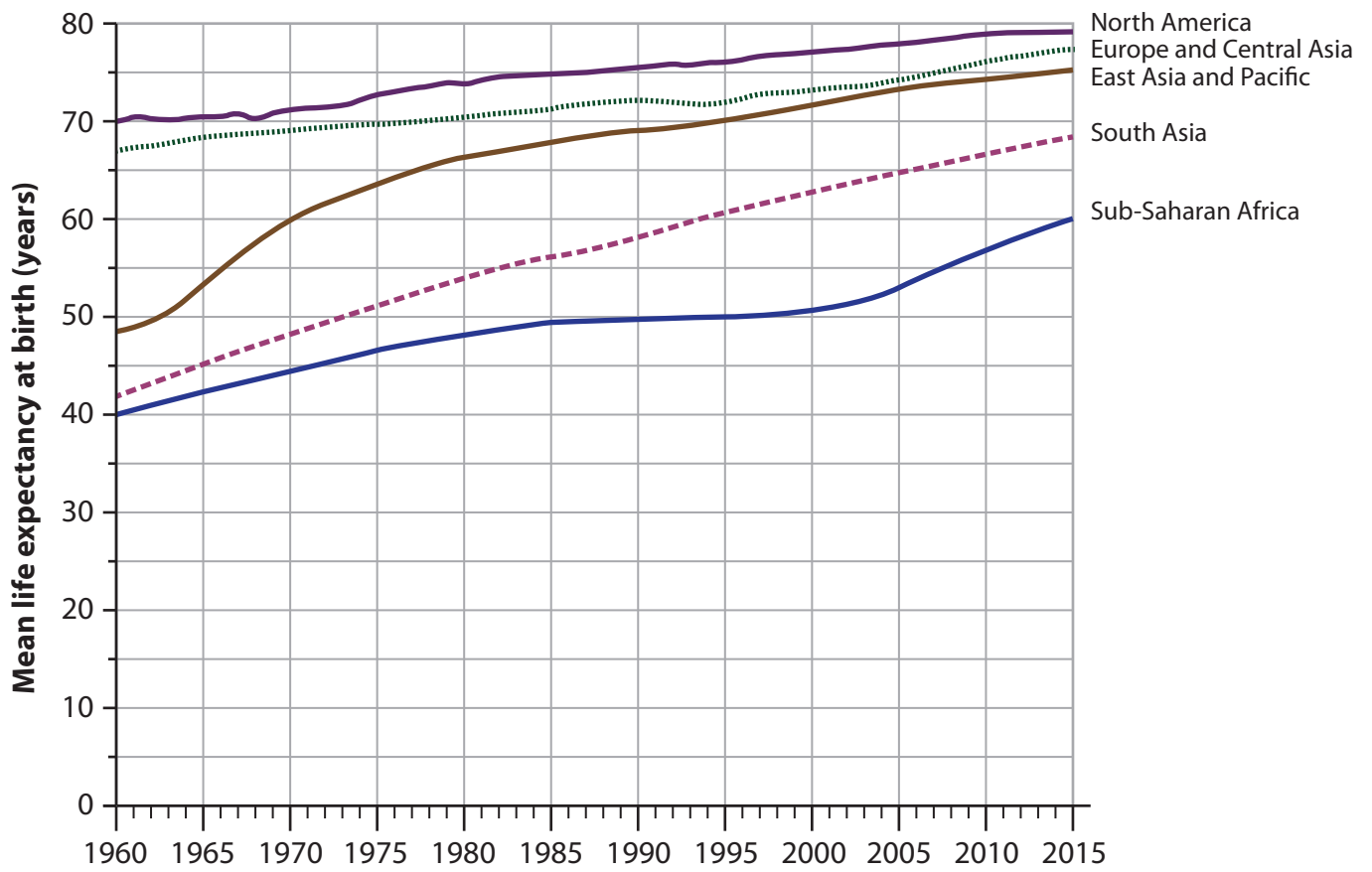
Figure 4b

Population pyramid and non-UK born data for Newcastle-upon-Tyne, North East England

Population pyramid and non-UK born data for Northumberland, North East England

SECTION C

The following resource relates to Question 5(b).



Region	% Increase between 1960 and 2015
North America	13
Europe and Central Asia	15
East Asia and Pacific	56
South Asia	57
Sub-Saharan Africa	50

Figure 5

Mean life expectancy at birth for selected world regions from 1960 to 2015

The following resource relates to Question 6(b).

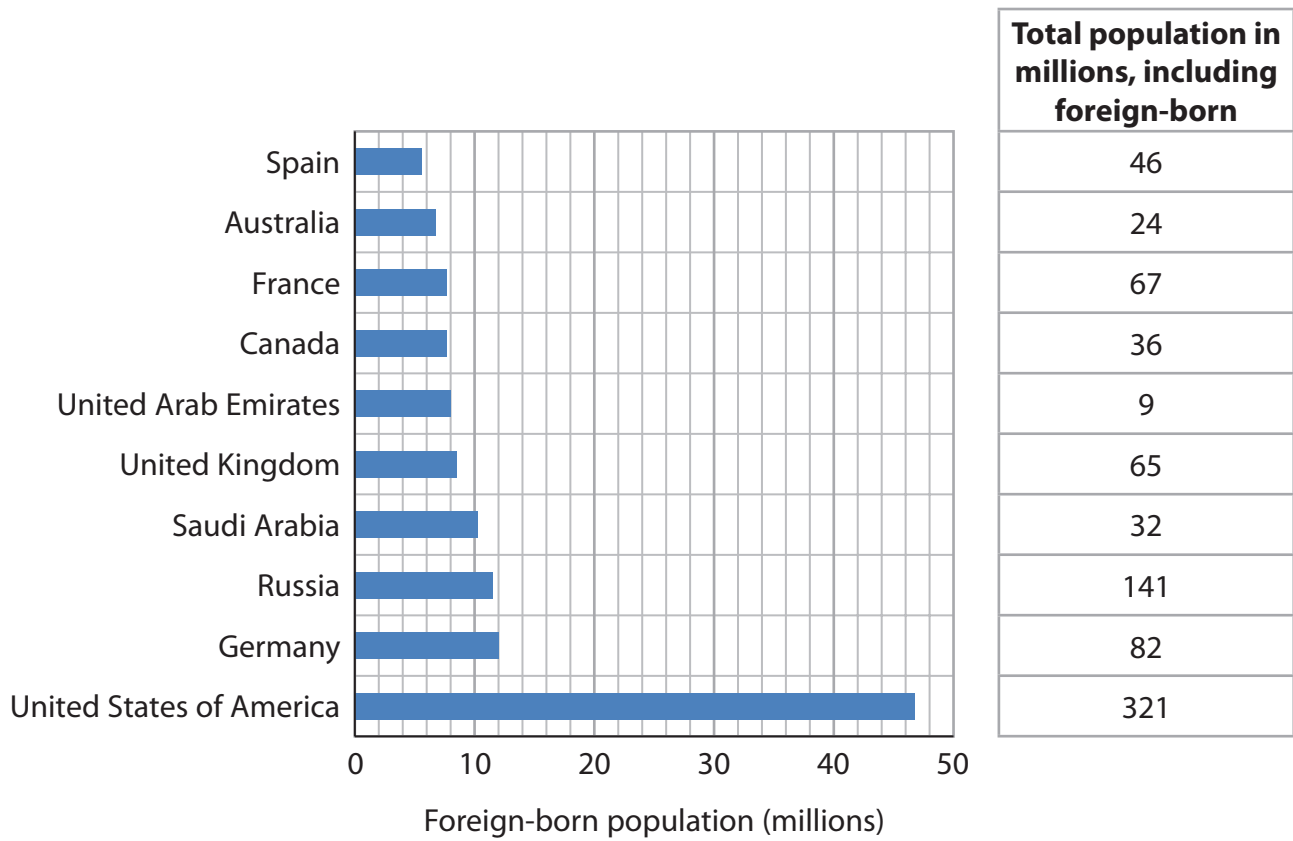


Figure 6

Foreign-born population (international migrants) by destination country, 2018

BLANK PAGE

BLANK PAGE

Pearson Education Ltd. gratefully acknowledges all following sources used in preparation of this paper:

Figure 3 (Source: <http://www.teesjsna.org.uk/employment>)

Figure 4a (Source: Open Government Licence v3.0)

Figure 4b (Source : © Crown copyright)

Figure 5 (Source : © 2019 The World Bank Group)

Figure 6 (Source: © United Nations)