

# GCE Physical Education – Exemplar Materials

## Unit 2: The Critical Sports Performer (6PE02)

### Task 2.3 – National Study (Netball)

#### **Mark band four (10-12):**

***“The student has demonstrated a high level of knowledge and understanding of the national provision in their chosen physical activity”***

#### **General comments**

This is an effective piece of work which demonstrates a good level of knowledge of many aspects of the national game. The content is underpinned by supporting documents which can be found in the appendix. The work including sub-titles to help the reader navigate themselves to key areas of text, and covers a number of the key areas in good detail, such as the player pathway and the TASS scheme.

#### **Word limit - to be considered in conjunction with descriptors in the specification**

The word limit is adhered to although it is perfectly reasonable for candidates to include case studies and tables to illustrate or develop points providing they are properly contextualised, add relevant depth to the work and which are not simply additional words conveniently ‘boxed’.

#### **Marking guide grid - to be considered in conjunction with descriptors in the specification**

<b>Primary areas required for consideration in the specification</b>	Role of national governing body	Pathways	Additional agencies / schemes	Talent identification / academies	Gender	Opportunities for disabled	Funding	Analysis Additional detail	Mark
<b>Student marks</b>	1	2	1	2	1	1	1	1	<b>10</b>

#### **Content**

The study opens with an overview of the various features of the player pathway to elite level which provides important information, although additional detail on the numbers involved, locations of key centres of excellence etc would have added helpful context for the reader. A short case study of a player who has recently benefited from these arrangements would also have helped the reader appreciate the impact of this approach.

The next section considers the talent identification process and gives an explanation of the 'double entry' approach taken. Additional information as to how this supports the progression from first level elite players in clubs and schools would have provided welcome detail. There is a brief outline as to the role of coaches in player advancement but additional detail is needed here. There is some detail about the affiliation fees players have to pay which gives a little detail on funding, but this section, together with the links with additional agencies, lacks factual content. One example of the detail that might have been explored would have been to research the key sponsors involved. Gender and disability sections provide some information about these aspects of the national scene and there is an exploration of the TASS scheme complete with a case study to be found in the appendix. Finally, there is a concluding paragraph which identifies possible areas for future development, including enhancing the opportunities for men and those players with additional needs.

### **Areas for improvement**

Extra marks would have been awarded had the candidate provided additional depth and detail in a number of areas. The role of the national governing body is not made clear and the sections on the importance of effective links with additional agencies (such as UK Sport and the EIS) and how the sport is funded lack clarity and factual content. However, there is much good background information and the study is just worthy of a band 4 mark.

<b>Task 2.3 — National Study</b>	Max. word limit adhered to 954	<b>10/15</b>
----------------------------------	--------------------------------	--------------

For this national study I am going to focus on the developments beyond first-level elite representation to national selection. The sport I will focus on is Netball.

Pathway (see appendix A)

The Netball Excel Pathway is the England Netball process for developing athletes with the attributes to attain excellence this works alongside England netball's long term player development model. The programmes within the pathway are firm on developing athletes to reach their potential and form the foundations. These programmes provide performance-enhancing training for individuals, not squads. Competition is outside the Excel Pathway Programmes, in clubs (county and regional leagues) and school competition. The regional excel pathway consists of 3 progressive programmes, which are satellite, county and regional. Excel Pathway programmes specifically for athletes and are not about competition. The pathway is based on the ethics of Long Term Athlete Development (LTAD) established by England Netball (see appendix B).

Satellite Academy is the first entrance into the Excel Pathway and the focus is on the individual development. This stage consists of athletes learning how to train and develop the skills of Netball. They are also learning the basic technical/tactical skills, and additional capacities. For more information see appendix C

The second stage is County Academy the focal point is on working with another player. The prominence remains on training and skill development with competition being used to test and refine skills. For more information see appendix D

Finally the third progressive programme for the regional excel pathway is Regional Academy the centre of attention is on working within units and aerobic conditioning. At this stage there is a greater individualisation of fitnesses and technical training. The emphasis remains on training with competition used to test and refined skills. For more information see appendix E

The National Excel Pathway this area of the pathway consists of the National Excel Programme (U17 & U19) which progresses into the Excel Plus Programme (U21 and National Squad). Previously known as the National Talent Programme (Talent 1 & 2), this phase is determined on pressure. Players can carry out high quality skills under pressure. The National Excel programme has an emphasis on the progress of the individual rather than the squad (or team) to try to facilitate the development of potential international champions of the future. See Appendix G for more information.

Talent Identification and Selection

To ensure the stable and constant development of future performance athletes it is vital there is a vigorous system for talent identification and selection at all levels of the Excel pathway. The England Netball Talent Identification and Selection Process is a 'double entry fluid system': Double Entry means that players can be recognised either through nomination and/or scouting. This system is dependent upon qualified scouts, coaches and teachers. Fluid also means that players can be added or removed from a group at any time. This ensures that athletes know the need to make progress to uphold position in the group and so encourages a competitive training environment. Players will be selected

into the Under 17 and Under 19 squad if they achieve the skills which are stated under National Excel in the Excel guidelines. See Appendix F for more information.

Coaches who are eligible to nominate players to these academies have to attend set workshops and they participate in 3 different workshops called Framework, Talent Identification and Scouting. See Appendix H for more information on these Workshops.

All players have to affiliate to England Netball to be able to play. A contribution of this fee is redirected to both county and regional associations so they can undertake their role. Affiliation is currently £31.50 for a senior member and £18.50 for a junior. Players will also pay club fees to cover the cost of facility hire and entry into competitions these costs are affordable as compared with football fees however it can restrict some people from playing.

### **Disability issues**

The Equality Act is not just about facilities, it is about changing the attitude towards and opportunities for, disabled people. There is a disabled basketball pathway yet netball does not have one. England Netball has produced modified rules that can be used with different groups. The current focus is on working with players with learning disability. England Netball has a Netball Disability Awareness course with supporting written resource developed by the Tottenham Hotspur Foundation.

### **Gender issues**

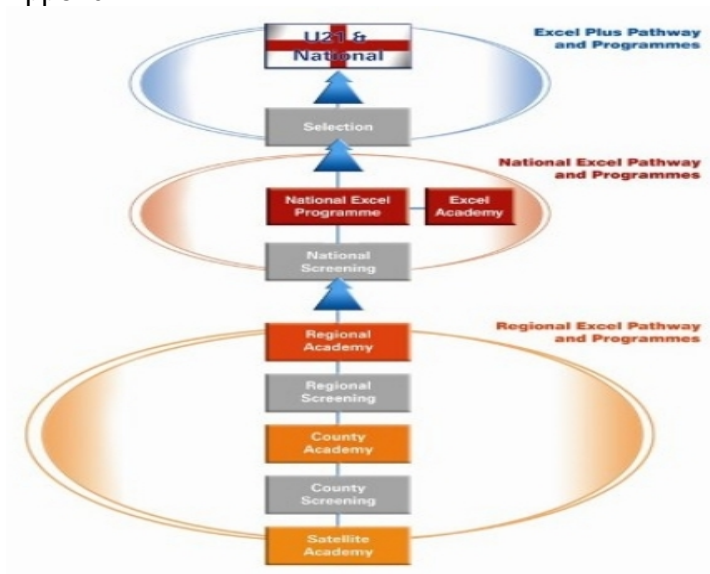
England Netball and International Federation of Netball Association (IFNA) rules state that single sex competition only is permitted, but England Netball has issued the following guidelines which should apply to all netball activities for young people aged eleven and under (school years 6 and below) and in curriculum time. For more information use this link: <http://www.Englandnetball.co.uk/get-involved/equality-in-netball/male-participation>

### **Funding**

The Talented Athlete Scholarship Scheme, or TASS as it is better known, is a Government funded programme that represents a distinctive partnership between talented young athletes, National Governing Bodies of Sport (NGB's) and the Higher (University) and Further (college/school) Education sector. TASS provides athletes with a tailored package of service worth up to £3,500 in value. These may include Coaching, Strength and Conditioning, Lifestyle Support, Physiology and Sports Medicine. Athletes aged 16 years old who are currently in education whilst competing at an elite level are eligible for TASS. For information on an athlete who has received this for netball see appendix J.

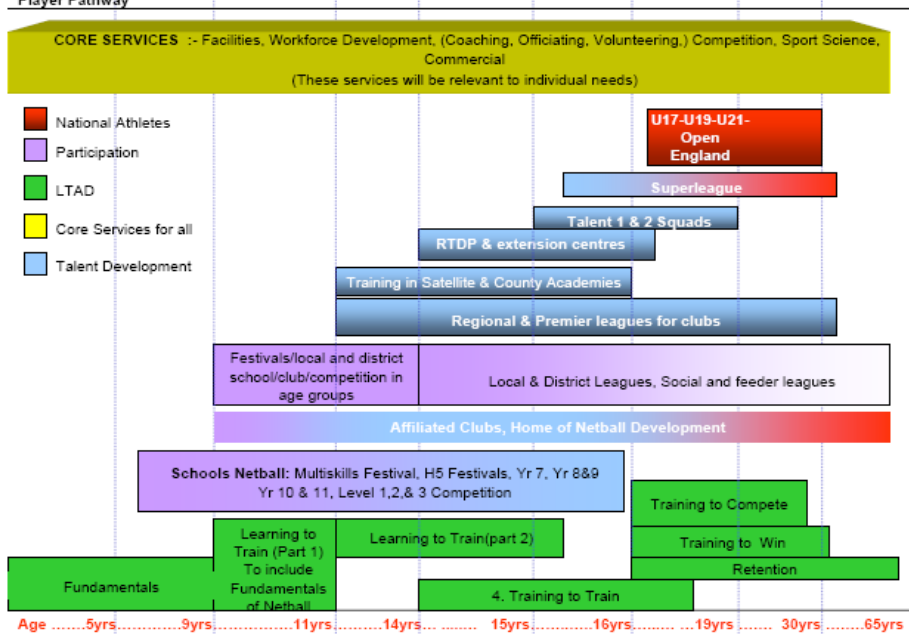
In conclusion there are lots of provisions and chances to excel in the sport and gain a wider range of skills nationally. However it shows that more should be done to involve those who have a disability and are less able to participate as frequently as those with no disabilities also introducing more opportunities for male participation, even working on ways for those less able to be selected for academies.

## Appendix A:



## Appendix B:

### Player Pathway



## Appendix C:

Purpose of the Satellite Academy	Outcome of the Satellite Academy	Duration of training	No. Of player	Age of players	Duration of time players are in Satellite Academy	Relevant competition	Talent Identification and selection	Progression
This is the first entrance into the Excel Pathway and the focus is on the individual development. This stage coincides with peak motor learning, therefore athletes are learning how to train and develop the skills of Netball. They are also learning the basic technical/tactical skills, and additional capacities.	To achieve the standards outlined under Satellite Academy in the Excel guidelines.	Minimum 10 x 2hrs over 10 months. Each academy to determine an appropriate time within the county calendar.	20	U14 years but age range to be kept flexible to cater for individual needs and maturation	An athlete may spend between 6 months to 2 years at this stage.	U14 or U16 County League/ Tournament and inter school competition.	Players identified as having the 'potential' to achieve the skills outlined under Satellite Academy in the Excel Guidelines	County Academy. If the athlete has reached their potential at Satellite Academy it is recommended that they continue their training at club level.

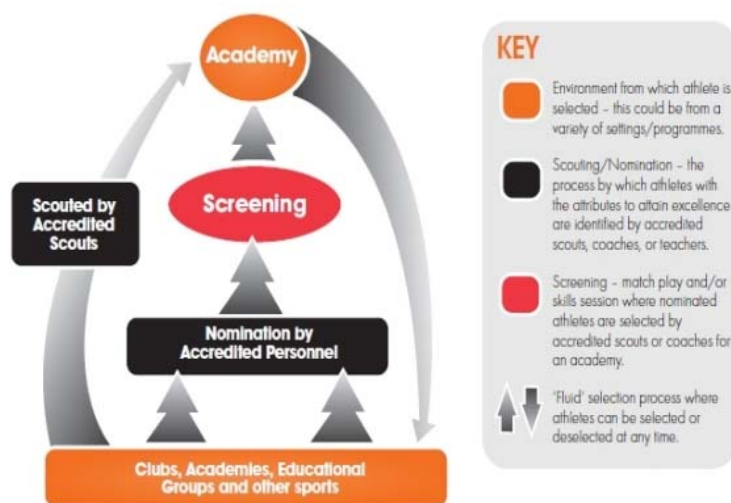
## Appendix D:

Purpose of the County Academy	Outcome of the County Academy	Duration of training	No. Of player	Age of players	Duration of time players are in County Academy	Relevant competition	Talent Identification and selection	Progression
Focus is on working with another player. The emphasis remains on training and skill development with competition being used to test and refine skills.	To achieve the standards outlined under County Academy in the Excel guidelines	Minimum 10 x 2hrs over 10 months. Each academy to determine an appropriate time within the county calendar.	20	14-16+ years but age range to be kept flexible to cater for individual needs and maturation	An athlete may spend between 6 months to 2 years at this stage	U14 or U16 County League/Tournament or U14/U16 Regional League and inter school competition.	Players identified as having the 'potential' to achieve the skills outlined under County Academy in the Excel Guideline	Regional Academy. Athletes who fail to progress to Regional Academy are recommended to seek further development at club level.

## Appendix E:

Purpose of the Regional Academy	Outcome of the Regional Academy	Duration of training	No. Of player	Age of players	Duration of time players are in Regional Academy	Relevant competition	Talent Identification and selection	Progression
Focus is on working within units and aerobic conditioning. At this stage there is a greater individualisation of fitnesses and technical training. The emphasis remains on training with competition used to test and refined skills.	To achieve the standards outlined under Regional Academy in the Excel guidelines.	Appropriate timing to be determined by Regional Talent Technical Support Group and Regional Talent Coach.	20	U17 years but age range to be kept flexible to cater for individual needs and maturation.	An athlete may spend between 1 - 2 years at this stage.	U16 or Senior Regional League or Netball Talent League (NTL).	Players identified as having the 'potential' to achieve the skills outlined under Regional Academy in the Excel Guideline.	Nomination to National Screening. Athletes who fail to achieve a nomination to National Screening are recommended to seed further development at club level, competing in regional league and/or possibly National Premier League.

## Appendix F:



<http://www.EnglandNetball.co.uk/competitions/2011-12/premier-league-1> 27

<http://www.EnglandNetball.co.uk/competitions/2011-12/premier-league-2> 30

<http://www.EnglandNetball.co.uk/competitions/2011-12/premier-league-3> 31

<http://www.EnglandNetball.co.uk/competitions/2011-12/flat-netball-superleague> 32

These here are links for premier league 1,2 and 3 and also the Superleague.

## Appendix G:

Purpose of the National Excel Programme	Outcome of the National Excel	Duration of training	No. Of player	Age of players	Duration of time players are in National Excel	Relevant competition	Talent Identification and selection	Progression
Previously known as the National Talent Programme (Talent 1 & 2), this phase is focused on pressure. Players can execute high quality skills under pressure. The National Excel programme has an emphasis on the progress of the individual rather than the squad (or team) to try to facilitate the development of potential international champions of the future.	To achieve the standards outlined under National Excel (Talent 1 & 2) in the Excel Guidelines.	Annual programme running from May to March. Players receive nationally managed and controlled training camps (Easter and Summer) and weekends (September - February). Selection in January will identify the U17 and U19 England Squads to compete in the Netball Europe Championships, held annually in March. In addition players also receive 2 hours 'Technical Training' every other week within a localised Excel Academy	Up to 40	15-19 years	Players may spend between 1-2 years at this stage.	NL, NSL and Premier League.	Players identified as have the 'potential' to achieve the skills outlined under National Excel (Talent 1 & 2) in the Excel Guidelines.	Selection into U17 or U19 squad to compete in the Netball Europe Championships. Athletes who fail to achieve selection into the National Excel Programme are advised to liaise with their Regional Excel Coach to determine the most appropriate training and competing environment.

## Appendix H:

### Framework

### Course Description

Specialist workshop for coaches who are delivering within the England Netball Regional Excel programmes (Satellite, County and Regional Academy level). The workshop will provide coaches with an understanding of the Netball Excel programme, guidance on athlete development and how they can apply their skills to achieve desired outcomes with their athletes.

### Talent Identification

#### Course Description

England Netball's new Talent Identification Workshop has been developed to help teachers and club coaches identify talented and potentially talented netballers. This is a certificated course and accredits attendees to nominate athletes to an appropriate level within the County Excel pathway (Satellite and County Academy level).

### Scouting

#### Course Description

England Netball's new Scouting Workshop has been developed to provide scouts/aspiring scouts with the skills and tools to select players into the County Excel pathway (Satellite and County Academies). Scouts must attend this workshop to begin the accreditation process of becoming a Local or County Scout. [http://www.englandnetball.co.uk/england/National\\_Excel\\_Pathway/Excel\\_Workshops](http://www.englandnetball.co.uk/england/National_Excel_Pathway/Excel_Workshops)

**EXCEL**

**Talent Identification Workshop**

Date: 29<sup>th</sup> April 2010  
 Time: 5pm to 7pm  
 Venue: West London Academy, Bengarth Road, Northolt, Middlesex, UB5 5LQ  
 Cost: £15 for affiliated individuals, £20 for non affiliated individuals  
 Course organiser: Rhiannon Hodkinson  
 Contact info: 07738696857

The aim of this workshop is to provide teachers and club coaches with the knowledge and understanding of the characteristics of a talented athlete in order to nominate athletes to an appropriate level within the County Excel pathway (Satellite and County Academy Level).

England netball  
 OF THE TEAM



## Appendix I:

Pathways	Opportunities	Contacts
<b>International</b>	<ul style="list-style-type: none"> <li>Visa Paralympic World Cup Paralympics</li> <li>European Championships – Juniors, Men and Women</li> <li>World Championships – Juniors, Men and Women</li> </ul>	<ul style="list-style-type: none"> <li>GB Wheelchair Basketball Association</li> <li>British Paralympic Association / GB Wheelchair Basketball Association</li> <li>GB Wheelchair Basketball Association</li> <li>GB Wheelchair Basketball Association</li> </ul>
<b>National</b>	<ul style="list-style-type: none"> <li>Junior, Men's and Women's League</li> <li>Richard Langhorn Trust Junior Tournament</li> <li>Norwich Union National Junior Games - open to pupils aged 11-18 years with a physical disability or visual impairment</li> <li>National League</li> </ul>	<ul style="list-style-type: none"> <li>GB Wheelchair Basketball Association</li> <li>GB Wheelchair Basketball Association</li> <li>Wheelpower</li> <li>GB Wheelchair Basketball Association</li> </ul>
<b>Regional</b>	<ul style="list-style-type: none"> <li>Regional Squads for the RLT Championships</li> </ul>	<ul style="list-style-type: none"> <li>GB Wheelchair Basketball Association</li> </ul>
<b>County</b>	<ul style="list-style-type: none"> <li>Club programmes</li> </ul>	<ul style="list-style-type: none"> <li>GB Wheelchair Basketball Association</li> </ul>
<b>Club</b>	<ul style="list-style-type: none"> <li>Local club information</li> <li>Multi Sports Clubs</li> <li>National Junior League</li> <li>Norwich Union National Junior Heroes Programme-Primary and Junior Sports Camps</li> </ul>	<ul style="list-style-type: none"> <li>County Sports Partnerships</li> <li>English Federation of Disability Sport</li> <li>GB Wheelchair Basketball Association</li> <li>Wheelpower/GB Wheelchair Basketball Association</li> </ul>
<b>School</b>	<ul style="list-style-type: none"> <li>School Competitions</li> <li>Education Syllabus for schools</li> <li>Norwich Union National Junior Heroes Programme-Primary and Junior Sports Camps</li> <li>Mini Games – Pan-disability event open to primary school aged pupils</li> </ul>	<ul style="list-style-type: none"> <li>Competition Managers</li> <li>GB Wheelchair Basketball Association</li> <li>Wheelpower/GB Wheelchair Basketball Association</li> <li>Disability Sport Events</li> </ul>

This covers theory and practical ideas for netball and is both thought provoking and useful, they will leave full of enthusiasm. Also other workshops such as Sportscoach UK (ScUK): How to Coach Disabled People in Sport, ScUK: Inclusive Coaching: Disability etc.

## Appendix J:

Kadeen Corbin plays for the university of bath and receives The Talented Athlete Scholarship Scheme for more information see this link: <http://www.tass.gov.uk/athletes/sports/netball.html>