

Write your name here

Surname

Other names

Centre Number

Candidate Number

Edexcel GCE

Music Technology

Advanced Subsidiary

Unit 2: Listening and Analysing

Monday 28 May 2012 – Morning

Time: 1 hour 45 minutes

Paper Reference

6MT02/01

You must have:

Individual CD player, headphones and
audio CD of recorded extracts.

Total Marks

Instructions

- Use **black** ink or ball-point pen.
- **Fill in the boxes** at the top of this page with your name, centre number and candidate number.
- Answer **all** questions.
- Answer the questions in the spaces provided
– *there may be more space than you need.*
- If you are using a computer to play the CD, access to sequencing software is
NOT permitted.
- You must ensure that the left and right earpieces of your headphones are worn correctly.

Information

- The total mark for this paper is 80.
- The marks for **each** question are shown in brackets
– *use this as a guide as to how much time to spend on each question.*
- Questions labelled with an **asterisk** (*) are ones where the quality of your written communication will be assessed
– *you should take particular care with your spelling, punctuation, grammar and clarity of expression on these questions.*
- Each question number refers to the relevant track number on the audio CD, eg Question 1 refers to Track 1, Question 2 to Track 2 etc.
- You may listen to each track as many times as you wish within the overall time limit of the paper.
- The use of the words 'instrument' or 'sounds' refers to vocals, acoustic instruments, electric/electronic instruments and electronically-generated sounds unless otherwise stated.

Advice

- Read each question carefully before you start to answer it.
- Keep an eye on the time.
- Try to answer every question.
- Check your answers if you have time at the end.

Turn over ►

P40432A

©2012 Pearson Education Ltd.

1/1/1



PEARSON

SECTION A

Answer ALL questions

Write your answers in the spaces provided or, where appropriate, choose an answer and put a cross in the box [X]. If you change your mind about an answer, put a line through the box [X] and then mark your new answer with a cross [X]

1 Roxette: Secrets That She Keeps

Track 1: music begins at 0'00"

(a) In which decade was this track recorded?

Put a cross in the correct box.

A 1970s

B 1980s

C 1990s

D 2000s

(1)

(b) What effect has been applied to the snare drum?

Put a cross in the correct box.

A Gated reverb

B Multi-tap delay

C Slapback echo

D Spring reverb

(1)

(c) How has the stereo field been used at the start of the track (0'00" to 0'05")?

.....

.....

.....

(2)

(d) Listen to the bass guitar in the intro (0'07" to 0'23"). Which of the following statements describing the rhythm is true?

Put a cross in the correct box.

- A The bass is playing repeated quavers
- B The bass is playing repeated crotchets
- C The bass is playing repeated triplet quavers
- D The bass is playing dotted crotchets and semiquavers

(1)

(e) Which range of frequencies has been cut from the guitar solo between 2'05" and 2'20"?

.....

(1)

(f) Fill in the **four** missing pitches from the vocal line between 0'37" and 0'44".

Insert music

(4)

(Total for Question 1 = 10 marks)

2 Magazine: Talk To The Body

Track 2: music begins at 0'00"

(a) What is the approximate tempo of this recording expressed as beats per minute?

.....

(1)

(b) How would the style of this music best be described?

Put a cross in the correct box.

A Disco

B New Wave

C Nu Metal

D Prog Rock

(1)

*(c) Describe the use of filtering on the synthesiser between 0'15" and 0'30".

.....

.....

(2)

(d) Apart from the synthesiser, what other keyboard instrument can be heard in this recording?

.....

(1)

(c) Which of these effects has been applied to the bass guitar?

Put a cross in the correct box.

A Chorus

B Delay

C Distortion

D Tremolo

(1)

(d) Name **two** methods of recording a bass guitar.

1

2

(2)

*(g) Describe two ways in which the drum pattern changes between 1'12" and 1'16".

.....

.....

(2)

(Total for question 2 = 10 marks)

3 Lady Gaga and Beyoncé: Telephone

Track 3: music begins at 0'00"

(a) Name the instrument which is heard in the intro.

.....

(1)

(b) How has the stuttering effect in the lead vocal at 0'16" been achieved?

.....

.....

(2)

(c) The chorus contains harmony vocals sung by the same singer. What recording technique has been used to achieve this?

.....

(1)

(d) Complete the table below to name the chords used in the first four bars of the chorus (0'47" to 0'55").

Stop callin' stop callin'	Example: F minor
I don't want to think anymore	(i)
I left my head and my	(ii)
Heart on the dance floor	(iii)

(3)

(e) What is the tonality of this music?

Put a cross in the correct box.

A Atonal

B Major

C Modal

D Pentatonic

(1)

(f) Compression has been used in this track. Fill in the missing words in the sentences below.

(i) When a signal's amplitude exceeds the , the compressor reduces the level.

(1)

(ii) A high ratio setting significantly reduces the range.

(1)

(Total for question 3 = 10 marks)

4 Deep Purple: Lay Down, Stay Down

Track 4: music begins at 0'00"

- (a) Complete the table below to describe what the instruments are playing at the time references shown. An example has been given for you.

Section	Instrument	Description
Intro 1 (0'00"-0'06")	Piano	Example: Fast, descending pentatonic scale
Intro 2 (0'06"-0'17")	Guitar and bass	(1)
Verse 1 (0'17"-0'32")	Drums	(1)
Chorus (0'49"-1'18")	Piano	(1)

*(b) Describe the panning of the vocal tracks on 'Lay down, stay down' at 0'59".

.....

.....

(2)

(c) Complete the table below to describe how you would close-mic a snare drum.

Polar pattern of chosen microphone	
	(1)
Positioning of microphone	
	(2)

(d) Name **two** performance techniques used by the guitarist in the solo between 2'25" and 3'16".

1

2

(2)

(Total for question 4 = 10 marks)

TOTAL FOR SECTION A = 40 MARKS

SECTION B

Answer BOTH questions

5 Special focus style - Rock and Roll

Eddie Cochran: Completely sweet

Track 5: music begins at 0'00"

(a) What is the interval between the two guitar chords heard from 0'03" to 0'09"?

Put a cross in the correct box.

- A 2nd
- B 3rd
- C 5th
- D Octave

(1)

(b) How does the groove change at 0'30" (after verse 1)?

.....

(1)

(c) The rhythmic performances on this track are loose. How could this be avoided using modern technology?

.....

(1)

- (d) There are some problems with the recording of the lead vocal. Complete the table below, describing how these problems could be avoided **using the technology of the period**.

Problem	Solution
Plosives	(1)
Distortion	(1)

- (e) Choosing from the words below, complete the sentences.

analogue digital feedback master reverb volume

- (i) In this recording, echo was produced using tape.
- (ii) The was turned up to create multiple repeats.

(2)

- (f) What is a typical delay time for slapback echo?

Put a cross (x) in the correct box.

- A 10ms
- B 100ms
- C 500ms
- D 1000ms

(1)

- (g) Name two of the musical styles that were combined to create Rock and Roll.

- (i).....
- (ii).....

(2)

- * (h) Outline the musical styles of **two** of the following artists and their place in Rock and Roll. Support your answer with reference to a specific track.

Put a cross (x) in **two** of the boxes below to indicate your choices.

- ☐ Bill Haley and his Comets
☐ Buddy Holly
☐ Elvis Presley

Artist 1

.....
.....
.....
.....
.....
.....
.....
.....

(5)

Artist 2.

.....
.....
.....
.....
.....
.....
.....
.....

(5)

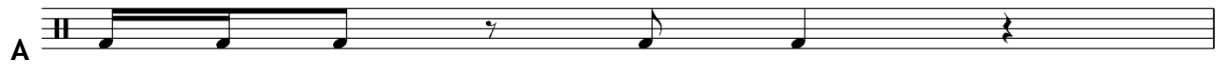
(Total for Question 5 = 20 marks)

6 Special focus style - Rap and Hip Hop

Grandmaster Flash and the Furious Five: It's Nasty

Track 6: music begins at 0'00"

(a) Which of the following best represents the repeated rhythm of the kick drum between 0'09" and 0'19"? Put a cross in the correct box.



(1)

(b) What term best describes the synths heard in the intro?

Put a cross (x) in the correct box.

A Analogue

B FM

C Granular

D Polyphonic

(1)

(c) What function is used to produce the slides between notes in the bass synth line between 0'21" and 0'26"?

.....

(1)

(d) The two higher synth lines have been spread across the stereo field. Describe two ways in which this may have been achieved.

1

2

(2)

(e) Early Hip Hop used the distinctive sounds of a particular drum machine. What is the name of that machine?

Put a cross in the correct box.

A Juno 6

B TB-303

C Akai S900

D TR-808

(1)

(f) Apart from using drum machines, how were rhythm tracks typically constructed in early Hip Hop?

.....

(1)

(g) A brass section features on this recording. Complete the sentences below which refer to recording a brass section.

Brass sections can be hard to record because of their high SPL. SPL stands for <div>(3)</div>
If you use a condenser mic, you should switch on the..... to make it less sensitive. <div>(1)</div>
To reduce spill onto the other tracks, you could use either or <div>(2)</div>

(h) What word best describes the rhythm of the triangle part from 1'10" to 1'24"? Put a cross in the correct box.

- A Ritardando
- B Rubato
- C Swung
- D Syncopated

(1)

*(i) Outline the development of rap and hip hop music through the 80's, supporting your answer with reference to important artists and styles, explaining their significance.

.....

.....

.....

.....

.....

.....

.....

.....

.....

.....

.....

.....

.....

.....

.....

(6)

(Total for Question 6 = 20 marks)

TOTAL FOR SECTION B = 40 MARKS

TOTAL FOR PAPER = 80 MARKS