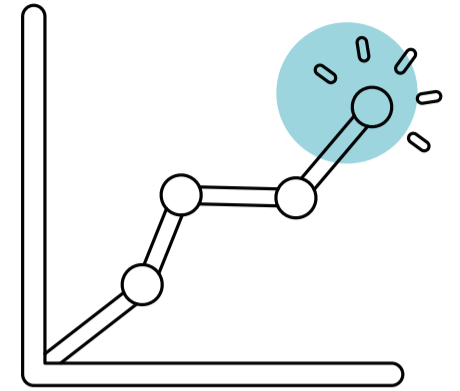


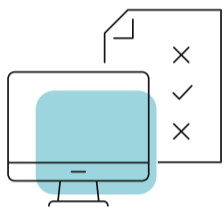
# Making the transition from GCSE to A level Mathematics

We know that the **transition from GCSE to A level Mathematics** can be challenging. For this reason we have a number of resources that can be used to help smooth the path for learners.

 You can use the **links** in this document to access the suite of transition resources directly.



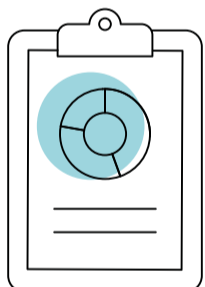
## GCSE to GCE Transition Worksheets



These worksheets are designed to be used by learners before they begin the A level course. Each worksheet covers a key requisite concept that will be assumed knowledge. The number at the beginning of each worksheet relates to the relevant sections of the “A level 2-year Scheme of Work”.

**GCSE to GCE transition worksheets**

## GCE 2017 Baseline Tests

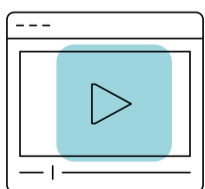


These formative baseline tests can be taken by learners before they begin studying the A level course. They assess key concepts that learners are required to know to be successful on the course. There are separate tests for Mathematics and Further Mathematics, and they can also be used with learners who are studying for an AS level in either subject.

**Maths Baseline test**

**Further Maths Baseline test**

## GCSE/GCE Crossover Topics Videos and Worksheets



This free collection of videos provides walk-throughs of selected examples from the Pearson Edexcel Year 1 Pure Mathematics textbook. The examples have been selected as they cross over with content from the GCSE specification. The worksheets can be used as additional practice and intervention once the course has been started.

**Crossover Videos**

**Crossover Worksheets**