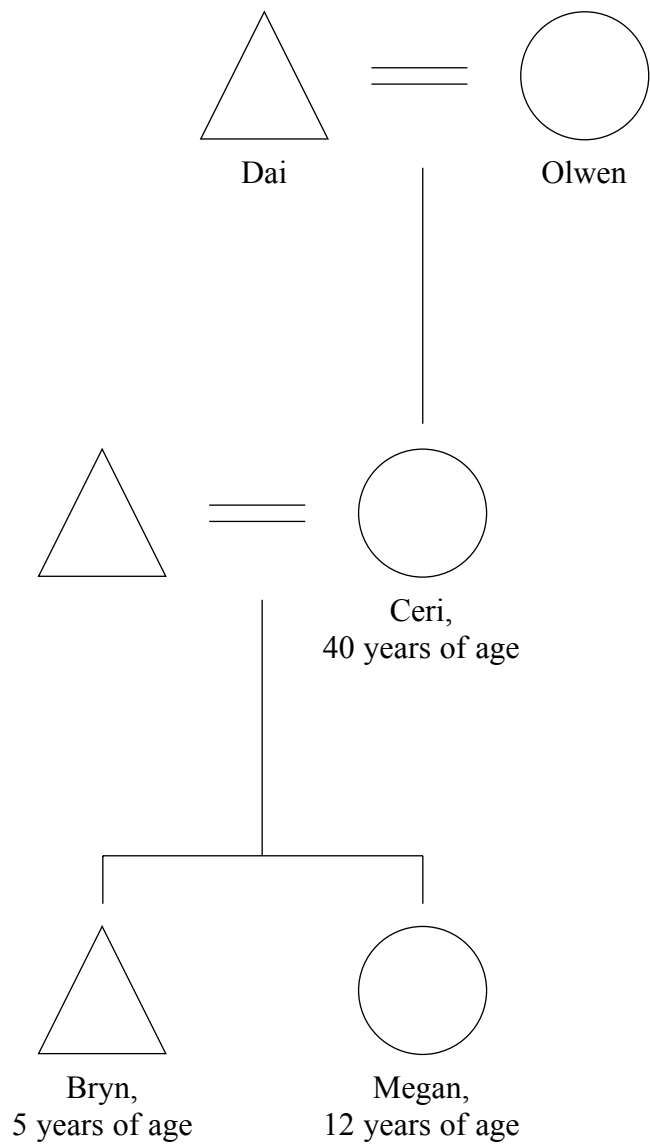


BLANK PAGE



This question paper is based around Olwen and Dai and their family.



key

△ = male

○ = female



Answer ALL questions in the spaces provided.

1.

Olwen and Dai are married and in their seventies. They live in a small bungalow in the country. Their daughter, Ceri (40 years old), has separated from her husband. She and her two children, Megan (twelve years of age) and (Bryn five years of age), have come back to live with Olwen and Dai.

(a) (i) State Olwen's current life stage.

..... (1)

(ii) Identify **three** physical features associated with this life stage.

1

.....

2

.....

3

..... (3)

(b) Identify how Olwen's physical, intellectual, emotional and social development may be affected by Ceri's family coming to live with her and Dai.

Physical

.....

Intellectual

.....

Emotional

.....

Social

..... (4)



Leave
blank

(c) Olwen looks after Bryn and Megan while Ceri searches for a job. Bryn likes to climb trees, paint and listen to stories.

Using the information given, explain the difference between fine and gross motor skills.

.....

.....

.....

.....

.....

.....

.....

.....

.....

.....

.....

(4)



Leave
blank

- (d) Ceri is finding it extremely difficult to get a job as she has not worked for 15 years. She needs an income to support herself and the children.

Examine how employment affects the health and well-being of a family.

.....

.....

.....

.....

.....

.....

.....

.....

.....

.....

.....

.....

.....

.....

.....

.....

.....

.....

.....

.....

.....

.....

.....

.....

(8)



Leave
blank

(e) Ceri is now a lone parent.

Discuss how this change may affect her self-concept.

.....

.....

.....

.....

.....

.....

.....

.....

.....

.....

.....

.....

.....

.....

.....

.....

.....

.....

.....

.....

.....

.....

.....

.....

(10)

(Total 30 marks)

Q1

--	--

--	--



BLANK PAGE



2.

Dai is a retired police sergeant. He had a heart by-pass operation five years ago after several years of disability.
He enjoys walking and gardening although he suffers from mild arthritis in his joints.

(a) (i) Dai describes being healthy as working in his garden without pain.

State **two** names for this view of health.

1

2

(2)

(ii) Define the holistic view of health.

.....

.....

.....

.....

(2)



(b) Dai had a stressful occupation and worked long hours. His meal breaks were short and he ate a lot of convenience foods.

Explain how Dai's lifestyle may have contributed to his previous heart problems.

.....

.....

.....

.....

.....

.....

.....

.....

.....

.....

.....

.....

.....

.....

.....

.....

.....

.....

.....

.....

.....

.....

.....

.....

.....

.....

.....

(6)



Leave
blank

(c) One aim of health promotion campaigns is to encourage individuals to adopt healthier lifestyles.

Discuss the approaches that may be used in such campaigns.

.....

.....

.....

.....

.....

.....

.....

.....

.....

.....

.....

.....

.....

.....

.....

.....

.....

.....

.....

.....

.....

.....

.....

.....

.....

.....

.....

(10)



- (d) Ceri and her family have moved from a large city where both children were immunised.
Health professionals are concerned about the levels of immunisations for children in city areas.

The table shows data for England and large cities in the UK.

Percentage of children immunised by their 2nd birthday in 2001/02 by location		
Location	Diphtheria, tetanus, whooping cough	Measles, mumps and rubella (MMR)
England	94	84
London	89	75
Birmingham	94	82
Leeds	93	83
Manchester	89	80
Glasgow	96	87
Liverpool	93	84

(Data from the Department of Health 2004)

- (i) Identify the city which has the highest percentage for both groups of immunisations.

..... (1)

- (ii) Identify the city which most closely reflects England as a whole.

..... (1)



BLANK PAGE



3.

Megan, who is 12 years of age, will be starting her new secondary school next month. Megan is rather shy and worried about starting school as she does not know anyone in the area.

(a) (i) State Megan's current life stage.

.....
(1)

(ii) Megan is already experiencing some physical changes related to her life stage.

Identify **three** physical changes that Megan will experience in this life stage.

1

.....

2

.....

3

.....
(3)



Leave
blank

(b) Megan has not made any friends since moving to her grandparents' house.

Explain the importance of having friends to:

(i) Megan's physical development.

.....

.....

.....

.....

.....

.....

.....

.....

.....

.....

.....

(4)

(ii) Megan's intellectual development.

.....

.....

.....

.....

.....

.....

.....

.....

.....

.....

.....

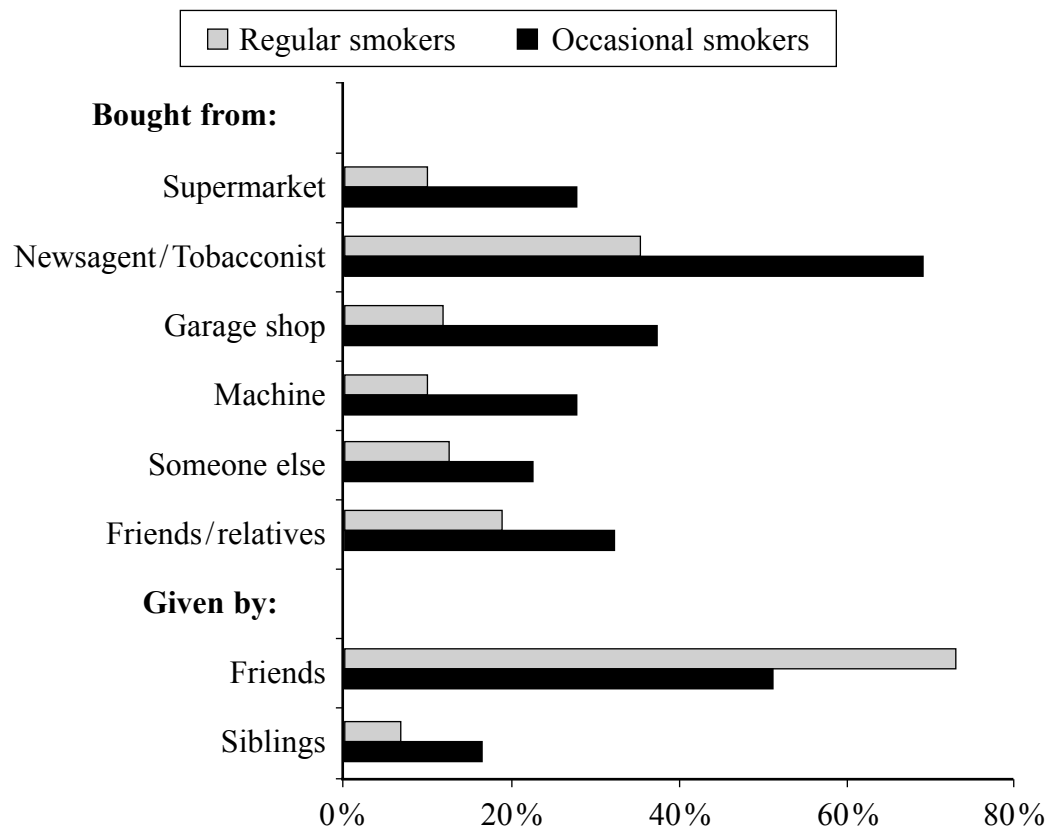
(4)



- (d) The secondary school that Megan will join has been experiencing problems with pupils smoking. The Head teacher has contacted the local Health Promotion Unit for some practical assistance.

The results of a survey show where pupils obtained their cigarettes.

Most common sources of cigarettes, by smoking status, 2004



(Source: Smoking, Drinking and Drug use among Young People in England in 2004. The Information Centre)



BLANK PAGE

