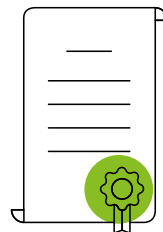


BTEC assessment and results 2022/23 - schools & colleges guide

In this guide you will find all the information you need on assessment if you are a BTEC educator.



Principles and
key dates



How BTEC
qualifications
are awarded



Previous
adaptations
due to Covid

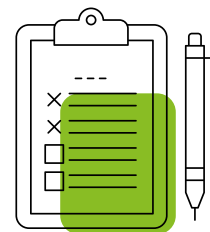


Grades
and grade
boundaries



Appeals
and further
support





The principles around awarding results in 2023

This year the Government has confirmed that exams, external and internal assessments should go ahead as planned. Ofqual has set out their [plans for awarding qualifications in 2023](#) and their plans to return to a normal, pre-pandemic approach to grading this summer for A levels, AS levels and GCSEs, as well as for vocational qualifications.

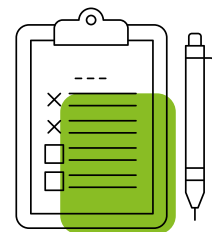
Our guiding principle and approach to awarding BTEC qualification results in 2023 is to return to pre-pandemic performance standards, but with checks and balances that allow us to be sensitive to the disruption learners have faced (just as for A levels and GCSEs). We aim to ensure learners are not advantaged or disadvantaged, as far as possible, compared to those studying for GCSEs and A levels.

Key dates

This year, the key dates relating to the issuing of results are as follows:

5 July	Claiming and internal assessment grade submission deadline You must have made a full award claim before 5 July for all learners who are expecting to receive a result in August 2023. You must also submit all internal assessment grades by this deadline. If you haven't, we will be unable to guarantee your learners will receive a result in August.
9 August	Release of Level 3 results to centres under embargo
16 August	Release of Level 2 results to centres under embargo
17 August	Level 3 results issued to students
24 August	Level 2 results issued to students

For further information please see our [key dates timeline](#).



Ofqual checkpoints

This year we have worked in partnership with schools and colleges to meet three Ofqual checkpoints for these in scope qualifications.

Checkpoint 1 | 26 May

The latest date by which awarding organisations must have agreed with schools and colleges which students should expect to receive a result by 17 August.

Checkpoint 2 | 23 June

The latest date by which awarding organisations must have agreed with schools and colleges on the remaining information or evidence needed for each student to receive a result.

Checkpoint 3 | 14 August

The latest date by which awarding organisations should issue VTQ results to schools and colleges.

Read more about the [Ofqual checkpoint deadlines](#)

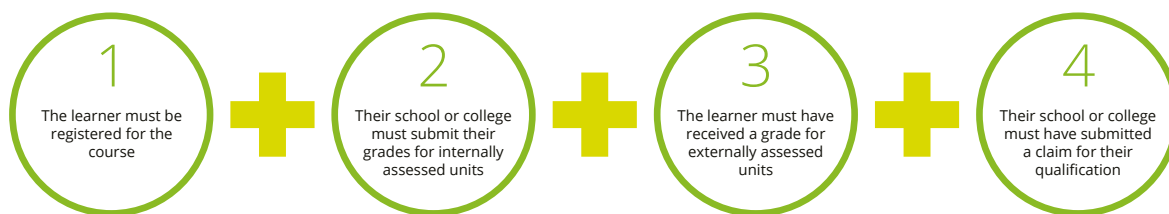




How BTEC qualifications grades are awarded

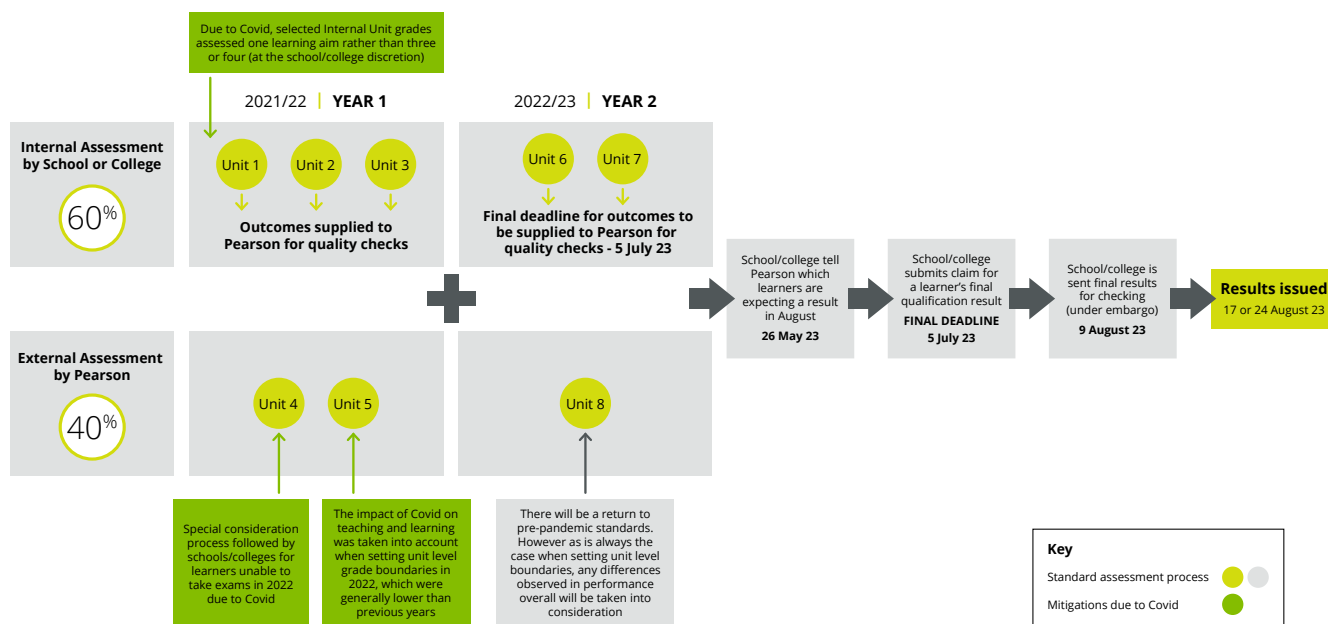
For Level 3 BTEC Nationals, for example, most qualifications are made up of around 60% of internally assessed units which are assessed by you and quality assured by Pearson. External assessments (usually around 40% of the qualification) are set, marked and awarded by Pearson.

To award a result, the following stages must be completed:



Without all this information, we are unable to award a result

The diagram below shows an example of a learner completing a BTEC Level 3 National Diploma (720), the units making up the qualification, the support available and the key milestone dates:



Additional support and adaptations due to Covid



Following guidance from the Government, a package of support was in place to support BTEC students taking assessments in 2021/22, including:

- **Streamlined Assessments for Internally Assessed Units** – internal unit grades awarded by teachers and tutors were streamlined and based on assessment of one learning aim or objective, rather than three or four
- **Special Considerations** – the Special Consideration process was in place as usual, meaning learners who unavoidably missed external assessments could be awarded unit grades by Pearson
- **Grade Boundaries for Externally Assessed Units** – for BTEC assessments set and marked by Pearson, we looked to award grade boundaries for those units in the best place to achieve parity in Summer 2022 with A levels and GCSEs.

This year, the majority of students finishing their qualification will have units already banked from 2021/22, where this support was in place.

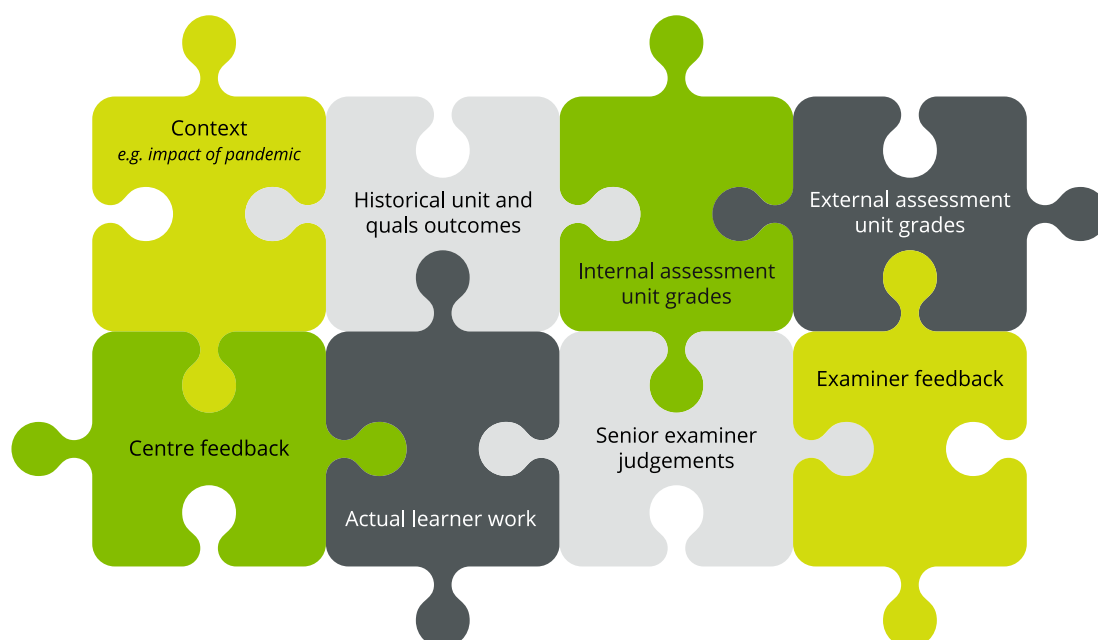




How we will set Grade Boundaries for External Assessments in Summer 2023

A group of subject and technical experts set grade boundaries (the number of marks needed to achieve a certain grade) after each external assessment has taken place. They review a range of evidence to make sure there is fairness, validity and robustness in the grade boundaries recommended.

Just as for A levels and GCSEs, we use qualitative and quantitative information to guide us in how we set grade boundaries. The types of evidence the subject experts look at includes:



The subject experts make a final recommendation considering all the available pieces of evidence. The results are also discussed with other awarding organisations, with oversight from Ofqual.



Appeals & further support



Appeals

For BTEC results for May/June 2023 external assessments, the appeals process that is detailed in the [**JCQ Guide to Awarding Bodies' Appeal Processes**](#) will apply. We've also created an [**Appeals Decision Tree**](#) to help guide you.

Further support

For the latest information on summer 2023 results, please visit our [**Teaching, Learning and Assessment support page**](#), or you can [**contact us**](#).

