

SEND STRATEGIES FOR MAINSTREAM EDUCATION

01

UNDERSTAND YOUR STUDENTS NEEDS

Get to know your students and their needs. Adapt your teaching to include all. Make informed decisions about how best to support seeking advice from others when appropriate.



02

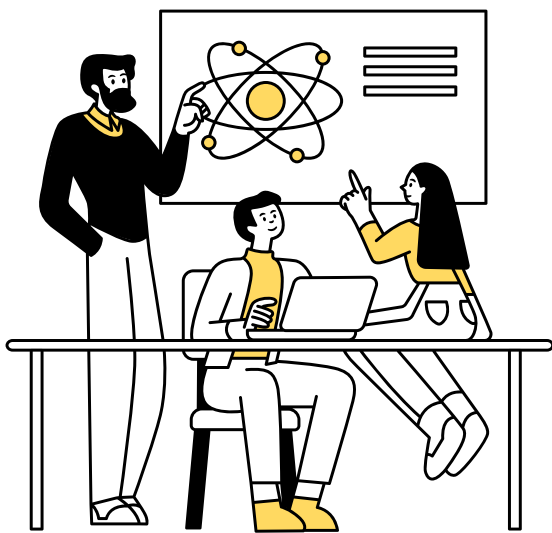
CREATE A POSITIVE ENVIRONMENT

Remove barriers preventing learning. Structure classroom so it is inclusive for all. Promote positive relationships and high expectations of all.

03

USE INTERVENTIONS

Ensure effective use of a TA to supplement teaching. Careful interventions using small group and one to one interventions to enhance understanding and support need.



04

PROVIDE HIGH QUALITY TEACHING

Consider using, adaptive teaching, scaffolding, clear instructions, metacognition, technology and flexible grouping. Regularly review your teaching practice.



Pearson

BTEC Level 1 and Entry
Qualifications