

Component 2: Fine Art Standard Mark – 30

	AO1	AO2	AO3	AO4	TOTAL
Mark	8	6	8	8	30
Level	3	2	3	3	
	Mostly emerging competent ability	Fully basic ability	Mostly emerging competent ability	Mostly emerging competent ability	

Keyword descriptors from the taxonomy:

Predictable
Growing Control

Endeavour
Safe

Examiner comments

This Fine Art Component 2 submission consists of an A3 sketch pad and a large outcome on a canvas covered board. Images of the work selected here reflect the characteristics of work just into Performance Level 3, Emerging Competent performance with a mark of 30/72.

The candidate makes a predictable visual mind map in response to the examination theme of 'Lock'. Various themes are considered for the subject matter of this Fine Art response, with initial primary source recording using pencil. The candidate presents some primary source photographs and responds to these with some initial pencil sketches.

The candidate references and analyses, the work of Gregory Crewdson leading to painted outcome with a drawing of a figure appearing disconnected with their surroundings. The candidate broadens their line of enquiry by referencing Edward Hopper and Lesley Oldaker and endeavours to create a pastiche of a painting by Hopper called 'Room in New York' and also a painting by Oldaker called 'Moving On'.

An overarching theme of 'disconnection' inspires the candidate to be reflective in their annotation and present a range of primary source photographs which lead to some predictable responses. The development of the candidate's line of enquiry is generally adequate and safe as the candidate selects a primary source photograph for their sustained preparatory piece.

The 10-hour period of sustained focus response is a painting that contains a biro drawing and pencil drawing that consolidates the thought process of the candidate. It is an outcome which displays endeavour and a growing technical control of the formal elements.

For the submission to move beyond Performance Level 3, the candidate could demonstrate greater evidence of presenting more accomplished critical investigations and demonstrate a greater understanding of how ideas are developed through the sources that have informed them.

Visual

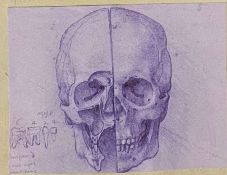


I chose these two photographs from Gregory Crewdson because I like the composition and structure. I feel that the composition is the most effective part of his work, this is because it creates a very lonely and isolated atmosphere. This is how I look because there is a lack of connection and they are locked into a state of concentration / isolation.

gregory crewdson

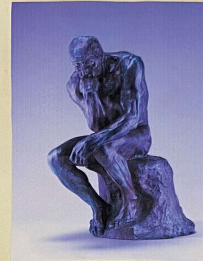


I found these drawings from Leonardo da Vinci because it really shows form and structure. He uses various lines and shapes, this creates a very bold and clear outcome.



Leonardo da Vinci

Auguste Rodin



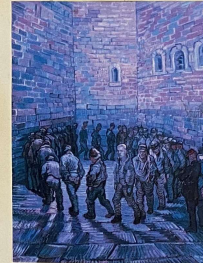
I like "The Thinker" by Auguste Rodin because I think it has a great concept and conveys the structure / sculpture is. The sculpture also has great detail and structure.



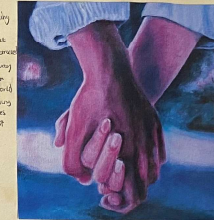
The three photos on the right clearly show connection and unity. I like this because of the use of light and the way they are linked into a state of awareness.



Van Gogh



In this painting by Van Gogh it shows how people are linked together and how they are connected to the world (because) showing how it matters to the theme of love, unity.



Mindmap

PRIMARY SOURCES

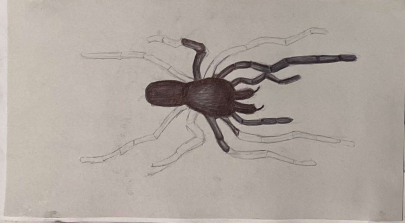
WHAT INTERESTS ME?
 → STRUCTURE/FORM
 WHY DID I DO THIS?
 → I HAD A SUBJECT MATTER
 WHAT COULD I DO WITH IT?
 → USE DIFFERENT MEDIA



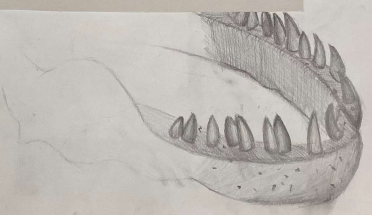
I DREW THE SKULL BECAUSE I LIKE THE STRUCTURE AND FORM BECAUSE IT MAKES IT MORE REALISTIC. IT ALSO LINKS TO THE IDEA OF LOOK AS MY MAIN INTEREST IS CANNOT-DOES (EG. FAMILY+ISOLATION) SO A SKULL COULD REPRESENT A LOT FAMILY NET OR RELATIVE THAT HAD CONNECTIONS TO PEOPLE. I ALSO WANTED TO TRY RELATE MY THEME TO PEOPLE BECAUSE I APPROVED STUDYING LUCIFER FRANK IN WEAR AND EXCITING SUN TOWER AND STRUCTURE/FORM.



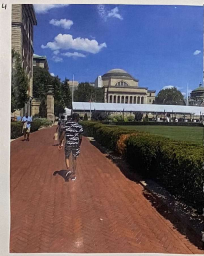
THIS THINKING IS IN A YEAR AGO DATE. I TRIED DRAWING WITH THE SKULL A TOOTH PICK FOR THE FIRST TIME I FOUND IT WAS DIFFICULT. HOWEVER THE TOOTH IS VERY STRONG WHEN I USE IT WITH MY HAND OR DISCONNECTED AT IT IS DEAD. OTHER HALF OF THE SKULL TO BE ONE PRICE BUT NOT THINK THIS MAKES IT BETTER. I WANT MORE EDGES.



MAIN THEME CONNECTIONS + LUCIFER FRANK (spider) - I WANT FORM OF BIRTH OR LUCIFER FRANK TO BE DRAWN FROM ME



Photos



I got photos 2, 3, and 4 from when I was in New York. I used them because it really shows disorientation to the environment. They all show a lack of connection to the people / environment around them. I like 2 the best because even though there are buildings it feels like I was looking from the inside. I like 3 because it shows a lack of connection to the people / environment around them. I like 4 because it shows a lack of connection to the people / environment around them.

graphs



I got these photographs of people in my bedroom to try to see if I could understand the environment from the environment. I never had any idea how to use any cameras more than I had before when I had my camera.



WHAT SUBJECTS ARE WE?
 → the subject views of (the one to see my opinion)
 WHAT WAS I TRYING TO DO?
 → show people in a way



In this drawing, I had to purposely make it blurry. This is because I wanted to emphasize the transition from reality. Just being a little blurry. This is done to the opposite of what you actually see in real life.



Gregory

Dianna wanted the 3 spring window, because she did to see people making and building.

What was I trying to do?
 I was curious to try some of the things in the photos that contained architectural and had many lines ready.

Dianna was my first?
 I think that she concentrated on knowing to fully understand from real documentary.



I love this photograph because of the lines. I feel like a really important the addition of the light, but it is like it is being engaged by humans.



I love this photograph because it is very architectural and beautiful. The lines between the light and the dark is so interesting. I love the way that the light is so soft and the way that the light is so soft and the way that the light is so soft.

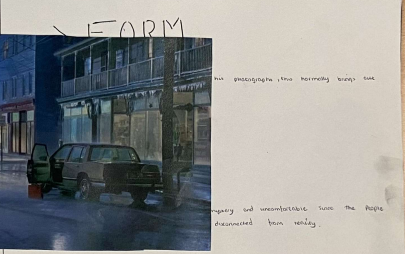
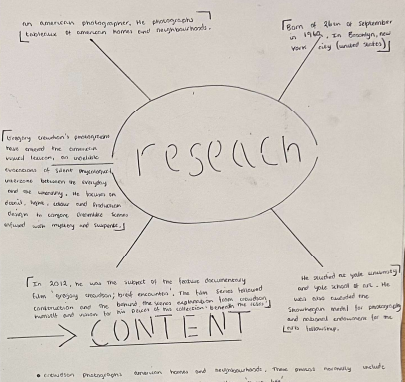


I love this photograph because of the lines. The way that the light is so soft and the way that the light is so soft and the way that the light is so soft.



I love this because it seems very interesting. The way that the light is so soft and the way that the light is so soft and the way that the light is so soft.

ELWOODSON

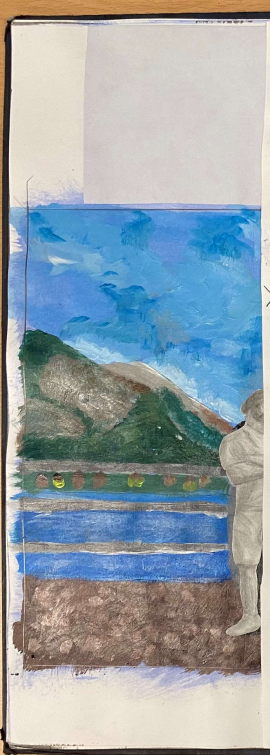




• In this response on the left page I used the idea of the figure looking a little more neutral. I think he has been to this place on in his head, I put it because it creates a very unusual but something more.



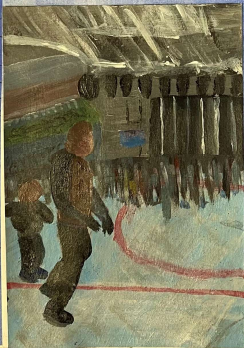
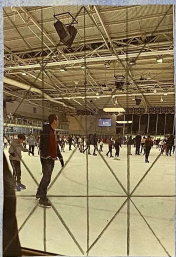
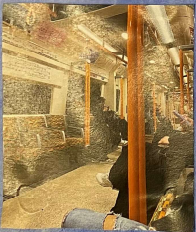
HOPPER



> CONTENT
> FORM
> MOOD

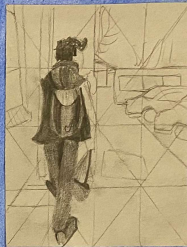
EDWARD HOPPER





Photograph Review

In these photographs I have taken, I wanted to explore the idea of observation and distance. This is given from looking at creation, they are not taken. I think that distance is the point I want to show like the most, and of all the others I have explored. This is because the way in which the camera is placed and the way in which the person in the picture, so it got some things that they think to observe that they had to think about in the space of time.



Research Review

I feel like I could have created more research from observer to experiment with different ways of looking. But I have been in the research that I did make, I have the one that I did with the camera. I have the one that I did with the camera. I have the one that I did with the camera. I have the one that I did with the camera.



LESLEY OLDAKER



CONTENT

The first part of the research was to look at the way in which people move through public spaces. This was done by observing people in a public space and recording their movements. The second part of the research was to look at the way in which people interact with public spaces. This was done by observing people in a public space and recording their interactions.

MOOD

The mood of the research was to explore the way in which people feel about public spaces. This was done by observing people in a public space and recording their feelings.

- 1. One of the main areas that in the UK and the research the work in 'UK, USA, Australia, Canada, Ireland, Italy, France, Sweden, Spain, and others. The work is based on public and transport infrastructure around the world.
- 2. The work involves looking at the way in which people move through public spaces, the way in which they interact with public spaces, and the way in which they feel about public spaces.
- 3. The work involves looking at the way in which people interact with public spaces, the way in which they feel about public spaces, and the way in which they move through public spaces.
- 4. The work involves looking at the way in which people feel about public spaces, the way in which they interact with public spaces, and the way in which they move through public spaces.



TRANSCRIPTION RESEARCH



PRACTICE

OUTCOME



LAYOUT



Why did I choose this subject matter?

I chose this subject matter because I feel the level of the eye camera and body language. I feel like it really represents my theme of dissociation of the surroundings.

What inspired me?

- Observation from environment
- Basic figure (man - dark)
- Basic background to make the figure stand out.

My final outcome consists of a collection of people, however some of the figures were to have no detail in "movement". Some of the figures are the same people in the same setting.

