



Component 1: Photography

Standard Mark – 29

	AO1	AO2	AO3	AO4	TOTAL
Mark	8	7	7	7	29
Level	3	3	3	3	
	Mostly emerging competent ability	Just emerging competent ability	Just emerging competent ability	Just emerging competent ability	

Keyword descriptors from the taxonomy:

Predictable

Safe

Growing control

Examiner comments

This Photography Component 1 submission consists of mounted A2 sheets. Final responses to each of the 3 projects ('Fragments', 'Identity' and 'Journey') are presented separately. Images of the work reflect the characteristics just within Performance Level 3, Emerging Competent.

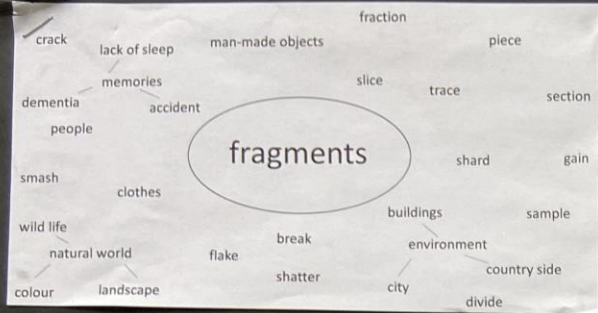
Predictable mind maps are used to brain-storm ideas with reference to a range of photographers and artists who inform the candidate's personal visual journey. For example, in response to the photographic joiners of David Hockney they endeavour to create a joiner of photographs of their Granddad's birthday party. Their responses to photographers Shilpa Gupta and Andrei Morgan inspire the candidate, in a safe and predictable way, to create a series of photographs of eyes.

The candidate shows some growing control within their Photoshop digital editing. For example, edited images of overlaid maps onto their own photographs are created within the 'Journey' project. Mono-printing and print transfers are trialled, as well the creation of a concertina book of images inspired by artist Ed Ruscha. Safe experiments with ideas, techniques and processes are evident throughout their submission, and broaden the candidate's visual language.

Photographic recording of observations shows growing control and annotations describe what they are photographing, with some reflection. Within the candidate's photographs of eyes, they comment that "there are so many different colours and textures here. Different shades of blue, whites, greys and if you look closely, also a tiny bit of green".

The final outcomes incorporate elements from developing ideas, and reflect endeavour in pursuing a sustained line of enquiry within each project. The candidate could demonstrate greater understanding of visual language to fully realise their creative intentions, in order for the submission to move more securely within Performance Level 3, Emerging Competent.

Fragments



Statement of intent:
 Fragments are small piece or part broken or separated from something. Fragmentations are the process or state of breaking or being broken into fragments. Fragmentation in Photography involves anteriority, decay, and loss in relation to some superseded whole. As excerpts from a world that was, photographs are understandable as fragments, which means that they carry with them an invitation to reflect on and even to reconstruct former environments and totalities.

My intent of this project is to create something just like my artist have. Moving forward with this idea I want to take photos of peoples profiles and some destinations I like for Andrea Costantini. For David Hockney I will take multiple photos of a place, object or view from different angels and times of day.



David Hockney

David Hockney is an English painter, draftsman, printmaker, stage designer and photographer. He is considered the most influential artist of the 20th century.

In the early 80's he began to produce photo collages which he called 'Joiners'. He used snaps of a single subject to make a composite image. His Joiners work came about by accident, Hockney didn't like the use of wide angled lenses used by photographers as he felt they distorted the image. While working on a painting of a terrace and room he took pictures and glued them together to work from. He realised that it created an image that made the viewer feel that they were moving through the room, he then began to work with this idea.



Andrea Costantini

Andrea Costantini has always been fascinated by photography and inspired by Surrealism and architectural structures. He takes pictures of faces and modifies them by adding other images in the form of montage. The series, titled Where Is My Mind, shows human subjects displaying thoughtful expressions as photos of streets and buildings hover over or extend from of their heads. The images depict daydream thought bubbles, blending head shots with cityscapes to capture the essence of daydreaming about faraway places or contemplating a busy city life.



The Grand Canyon South Rim with Rail, Arizona, Oct 1982

This collaged composition creates a powerful 3D effect, making you feel giddy looking over the railings. This photo looks like it is one photo cut up into fragments, but it is made up of individual shots taken at slightly different angles. When you look at the picture you can't just sweep across it you are forced to look at it slowly to take everything in

This image gives the effect of being thrust into the room, again as with the canyon image, it takes time to view the scene, as it would if you really were walking into the room, you must view it slowly to fully take it in. You have several aspects of the people in the scene to consider.



Christopher Isherwood talking to Bob Holman 1983



My thoughts one these pieces by Andrea Costantini is that the images above the head is what they are dreaming of or imagining. I like the way the image above outlines the persons profile.

Reflective Recording

I like these three photos as there's a story behind when taken.



When taking this photo I thought it would look a lot better than it does. However you can see the road and street light but the sky is not very clear due to how dark it was outside.

The branches the trees at each side of the path focus the views eye to the end of the path. Leading lines. I really like this tip of photo.

To the left of this image there's a branches of a tree which through them you can see the sky. I like the angel this photo was taken you can see the sunset through them

I think the leading lines and green nature around it is really nice and the story behind makes it even better.



On these two photos I like that there's a horizontal lines showing the beautiful sunset. I don't like how a lot of the image is taken up by grass but I was sitting down when taken so I think if I was standing it would be much better with less grass and more sky and road. I really like the colours in the sky and how they all blend together like the yellow, blue, purple and white.



This image nearly creates the rule of thirds although unfortunately it doesn't also I accidentally got part of my bag in the photo which ruined it.

I like this image but you can see more of the path then anything else. I would like it more if u could see more of the sky, trees and plants coming from the side of the path.

I don't like this image due to the time when I took the photo it made it come out very blurry. The blurriness does kind of make it look different.



This photo will hopefully be part of my final piece. This is why a close up to the light house.

This picture shows leading lines to the end of the path. Leading lines makes u really focus at the end of something.



I like this image as the leading lines goes the end of the path to an arch way out of the pathway. I also like the tree on the side which kind of distracts you from the leading lines but I like that.



I like the way the close up of the grass and flowers with the buildings in the background make the field look shaped not just flat. The crisp of the white clouds against the bright blue sky really catch the eye.



I plan to create a Hockney style landscape, but instead of taking shots at different angles as he did in the 'Grand canyon' image I want to take pictures at different times of day and in different weather conditions to see what the view would look like put together made up of these.

The view from the cliff top vast and cannot be captured I a normal picture you need to use a panorama image to get the full effect. This would be a good one to use as the landscape will change and have a different mood in different conditions.



Roberts
Smiths

Experimental



Here I have used photoshop to layer and then blend two of my images linking back to David Hockney. To create these images I have layered to images together using the options vivid light and lighten.



I took a series of pictures of my great grandads house on my brothers birthday, I wanted to use them to recreate a 'joiner' photo collage. The room is large and busy and appears distorted busy a panorama shot. There is a lot to look at in this room and I like the way he view has to really study it to see everything however I dot like this photo as the room is messy and very 20th century.

I liked Hockney's room joiners picture and wanted to try to recreate my own.

Jakes birthday



Mono printing



Mono printing is the process of making a print using 'mark making'. Mark making is any mark made using any material on any surface, such as: pencil on paper photoshop brush mark on a screen scratch in clay paint on a canvas A mark can be a line, a dot, a scratch, a curve, a thumbprint and so on.

Transfer printing onto fabric



I like the transfer printing onto fabric method as I like that's its on fabric so its different than just a normal printed photo however I don't like that's using this methods means losing detail and its difficult to get the perfect image.

Splash of colour



I have used different colours to focus the viewers attention to the main focal point of the image. Although this image doesn't so much link back to the artist I was experimenting and creating fun in the image.



Transfer printing in the textile industry usually means the sublimation of thermally stable dyes from a coloured design on paper at high temperature followed by absorption of the dye vapours by synthetic fibers in the fabric. The paper presses against the fabric and dye transfer occurs without any distortion of the pattern.

Final piece ideas

Idea 1

My first idea for my final piece is to create a kind of book looking piece. I have found these pictures as an example of what I'm thinking of doing.



For this I would use a long strip of white card paper and folding it as concertina. I would stick pictures on there just like the example ones. I would then add other things like pull a bit of paper and others slide out. Also add a bit where you could flick through like a book.



Idea 2

These are the images I'm focused on using for my final piece as all in some way I can link back to the artists from sheet one:



The Grand Canyon South Rim with Rail, Arizona, Oct 1982

For my second idea I'm thinking creating a picture out of lots of different pictures. The picture David Hockney created of the grand canyon is a great example of what I'm wanting to do. As for the other pictures.

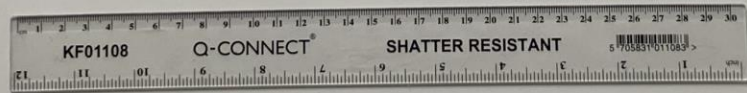
Idea 3

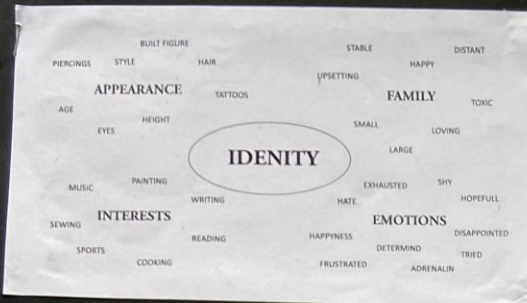
My final idea was to use my image to create an image like these ones I found on the internet. Using Andrea Costantini images from my sheet one I want to create a facial distortion while still using his idea by layering another image with it still with that facial distortion.



For my final piece I took a series of photos at the same location but at different angles, times of day and weather. I had 3 different ideas I want to use them for but my final decision was to go with my second idea which was to use David Hockney as an example to get loads of different pictures in same places but all different. After that I would cut and move them around to recreate the original view.







Eye Identity

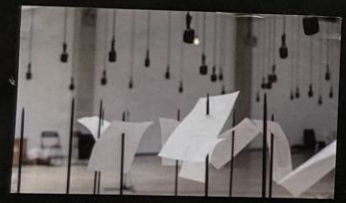
Although there is a bit of a blur on this photo I have taken, I really love all the different colours like blue, grey and white. In this eye you can see a lot of patterns as if like colour is exploding from the pupil.



Statement of Intent
 Identity is the qualities, beliefs, personality, looks and/or expressions that make a person or group. Individuals can be uniquely identified by using biometrics such as fingerprints. Everyone's eye is specific to them, no others share the same shape, colour or appearance. A fingerprint has 40 unique characteristics, the iris has 256, the only organ more complex than the brain. The eye has had many interpretations history. It was powerful symbol in ancient Egypt to the word of evil. The eye of horus is a symbol known around the world. I am going to create a family tree of eyes showing how different they are even between close family. I will do this by taking close up pictures of my families eyes. I will try out different techniques to take pictures. I will do this by looking at you tube videos explaining how to take close up pictures of eyes and by investigating artists who have used they eye in their work such as Morgan Andrei.



If you look at this photo from Shilpa Gupta and then at mine from the book shop, you can compare how both have leading line coming from one side being wider and the other being thinner.



Mogan Andrei
 Mogan began his work with eyes by taking photographs of friend's eyes to show the uniqueness of the organ from person to person. He has now photographed over 300 eyes as part of his 'Look Into My Eyes' project. He captures high-resolution close-up images of people's eyes and places them alongside the people themselves. From the degree of close-up, it is hard to tell the gender of the model, we can only see that from the inclusion of the people themselves. Mogan believes that "Every person is different in its own beautiful way and you can see that in their eyes, which are also unique from person to person". My eye family tree idea is designed to display this idea of the uniqueness of our eyes even in close family members.



This photo of blue and yellow eye I like as it looks like a sunflower in the sky or you could say it look like the sun shining brightly in the sky.

Shilpa Gupta
 Gupta is interested in human perception and how information, visible or invisible get transmitted and internalized in everyday life. Gupta is constantly drawn to how objects get defined, be it places, people, experiences and her work engages with zones where these definitions get played out, be it borderlines, labels and ideas of censorship and security. Her works uses sculpture, text, sound, and technology to create installations that examine the transmission and reception of information. Gupta frequently uses common materials such as soap, clothes, and sound equipment to address urgent issues related to the circulation of information and human migration including censorship and surveillance.



photo from Morgan Andrei as that the woman's structure. From Face I guess yourself what her just an eye.



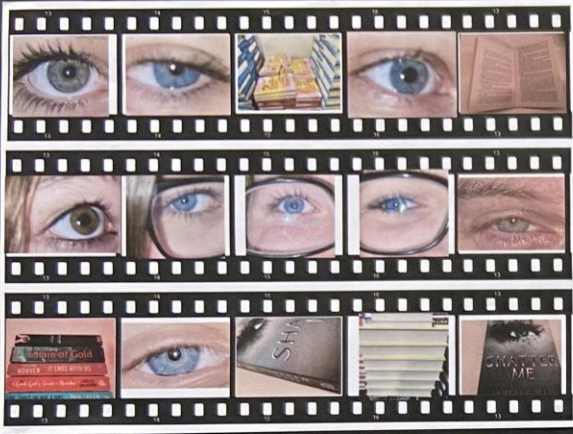
With this photo from Morgan Andrei you can see different textures within the hazel brown iris. The texture in this eye reminds me of bark, leaves, autumn and trees.



Reflective Recording

I think the angle isn't that great.

I think its too unfocused.



There's too much of a blur and hazy.

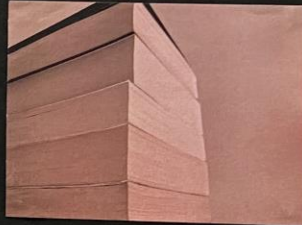
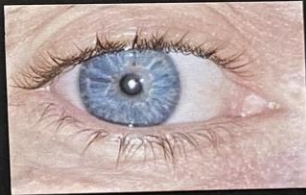
I believe the glasses ruin the photo.



In this photo I personally think you can see so many colours like blue, purple, green around the pupil, specks of white in the blue and purple and because of this I really like it.

The eye is open enough to probably see all the colours and textures.

There are so many different colours and textures here. Different shades of blue, whites, greys and if you look closely also a tiny bit of green.



This photo of an eye I have taken actually looks quite similar to and photo taken by Morgan Andrei. I think this as they have similar texture and pattern as in looking like bark or leaves. Although looking similar they also look very different as the photo I have taken has more different shades of brown, also with a little green and a almost cream colour.



Although I really like this photo I have taken I won't be using as the hazy blur ruins all the detail in the iris so will to retake it.



I retok the photo and will be using this one as you can really see all colours and textures from this viewpoint.



Although you can't see much colour and texture in this photo, I like how there's shadow and its clear from what direct light is coming from.

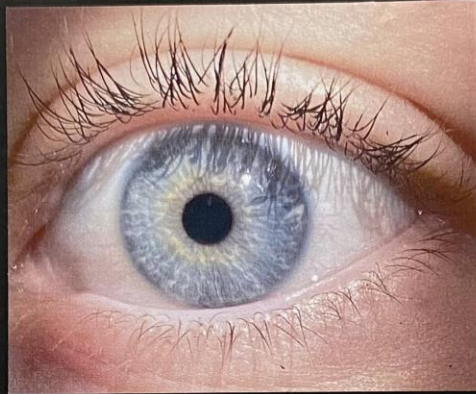
Inspired by artist



Experimental

Mono printing

Painting on acetate



For this experiment I went into the photoshop and used lots of different settings to make four completely different photos. Doing this technique reveals how you can completely manipulate how things look through something so simple.

Photoshop

When doing flash of colour I picked out four photos id taken and put them into photoshop. One by one I changed them into black and white. I proceeded to erase the black and white where I wanted. By doing this it makes the colour of the eyes pop. I especially like how the grey iris turned out because you see all the different textures and shades.



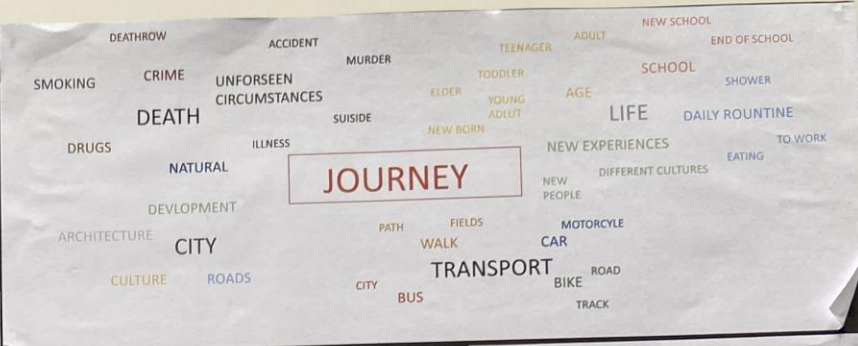
Flash of colour



Journey

Jack Latham

Jack Latham is a British photographer from Cardiff, Wales. He studied document photography in the university of Wales. His work inspires me due to a range of aspects which include the fact he's looked at a scene of crime and taken photographs of each stage and shown them in a map tip of way. This was turned into a book called the sugar paper theories. He's trying to tell a story through a journey of a murder. Trying to create something new in the photography world tapping into public's interest into thriller and mystery. The photos are bleak and as the scene is, everyday photos even though the subject matter is extreme. The black and white make photos seem old and lifeless like dead bodies.



Statement of Intent

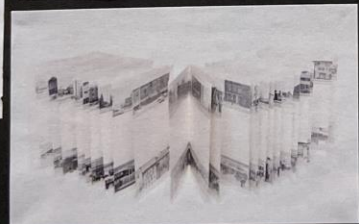
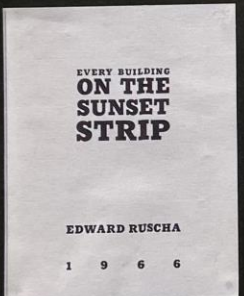
The theme for this project is journey, the aspects of this project I'm interested in is local places I've been to and have connections with. So far I've been on location such as London, Seaford, Lewes and Eastbourne. I intend to explore character of the places I visited for example the history of Lewes including tutor hoses and bonfire night. I also want to explore different techniques like mono printing when I do my experimental. I wanted to look at affects of buildings and objects to show the detail of history. I would like to improve my skills with photoshop.

Susan Stockwell

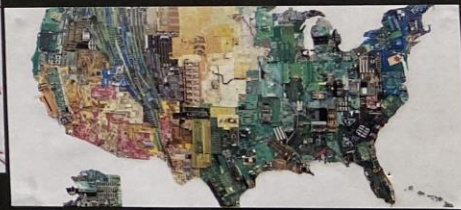
Susan Stockwell is a British contemporary artist from Manchester, England, who creates different types of work such as sculpture and large and small installations largely with a social or political theme. A key feature of her work is the use of recycled materials and debris such as used maps and coins. This 'America' sculpture is made from recycled computer components. It clearly shows the parts from the inside of an object that we take for granted in everyday life in a totally different light. I like variety of strong colours. I think it looks amazing. For 'Red Road Arteries' the artist has used red string to replicate a bus route in South London she uses where she lives. It is clever idea to create a map out of something as simple as string and it has a unique effect, particularly from the use to human arteries.

Ed Ruscha

Ed Ruscha is an American artist associated with pop art movement. His art takes different forms including painting, printmaking drawing, photography and film. His interest in everyday things led him to use Los Angeles as inspiration for many of his works both the cityscape and the film industry. He uses words and phrases in his art sometimes playing with language. The words he uses come from various sources. He used the 'Hollywood' sign and Twentieth Century Fox logo as well as words and phrases from books. Ruscha also published several books. Every building on the sunset strip is a collection of black and white photographs of property that he took whilst travelling the famous Sunset Strip.



I like this as Ruscha takes such a simple idea of documenting a journey from one place in photographs into something special and unusual. It is clever to use common buildings, something not considered in anyway inspirational yet found everywhere, to illustrate his journey and the changing scenery that he travelled through whilst travelling the sunset strip.



Reflective recording



I like this piece because the trees and path create leading lines down the path starting with a wide path and ending with a narrow path. Another reason I like this image is because of the tree arches covering the sky but not enough so you can still see the sunlight shining through the branch and leaves



I really like how this photo turned out as from a small bridge in Cuckmere which has leading lines down the river starting wide and ending narrow. With also a sunset reflecting onto the river.



I really like this photo because the tidal offence creates a bend in the ocean which leads your eyes to the sea.



This photo was taken because of the link to one of my artists Jack Latham. He took a photo of a fish tank for part of his murder in Iceland book journey. I took many photos of this jar fish tank and experimented by messing around with the jar.

I like this picture because the light from the sun reflects throughout the whole image. I like how I've caught the image in half. Like 50/50, one dark and one light. I could have improved this by taking the photo at different angle so the motorbike road sign wouldn't be there.



I took multiple photos of these trees but in different angles. This one was my favourite out the bunch as from taking the picture from a low angle shoot to make it come across as more lively and alive, rather than taking the photo from an average human height.



Experimental

8 page zine fold

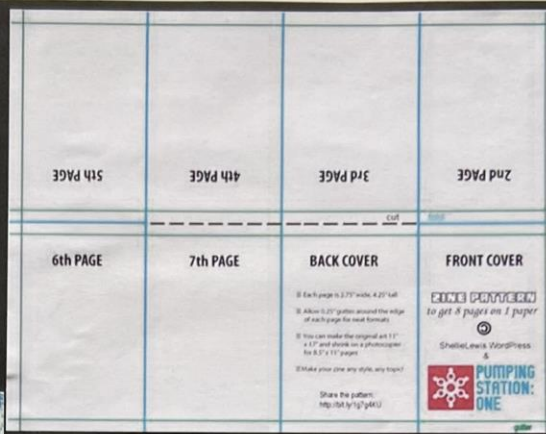
Concertina books



Cuckmere Haven

Cyanotype

Cyanotype is a photographic blueprint. Cyanotype is a photographic printing process that produces a cyan-blue print. Engineers used the process to produce copies of drawings, referred to as blueprints. I like how my cyanotype turned about as I feel the process brings out dark and sunlit area of the photos



To show a journey through my image I took, I used the 8 page zine fold I found online and used a guide to do it.



Photoshop

Inspired by one of the artists I used in sheet one, I have used maps from google and photos I took myself. I then went on photo shop and placed, layered and played around with different settings to explore allusions.



I like this image I've taken and then continued to edit in photoshop to merge it with a map of Lewes. By doing this I've created an image showing both a history and where it was taken place. The history of this being every November 17 crosses are lit and carried through Lewes as a remembrance to the 17 people who were burnt to death in the 1550s during the reign of Queen Mary.

To get this result, I layered a map of Newhaven with a picture I took in Newhaven of a tree. I've used photoshop and messed around with different affects like vivid light, exposure and dark light. I kept going through them until I found my favourites.

I like how I've used photoshop to create this image of Seaford because although the picture of the map is showing strong through the image you can still perfectly see the beach of Seaford.



London



Eastbourne



Newhaven



Seaford

