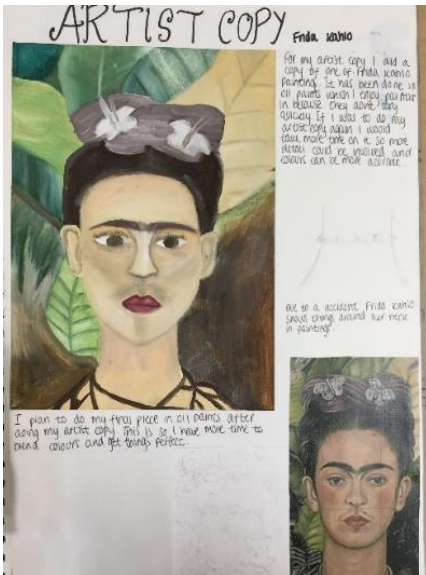


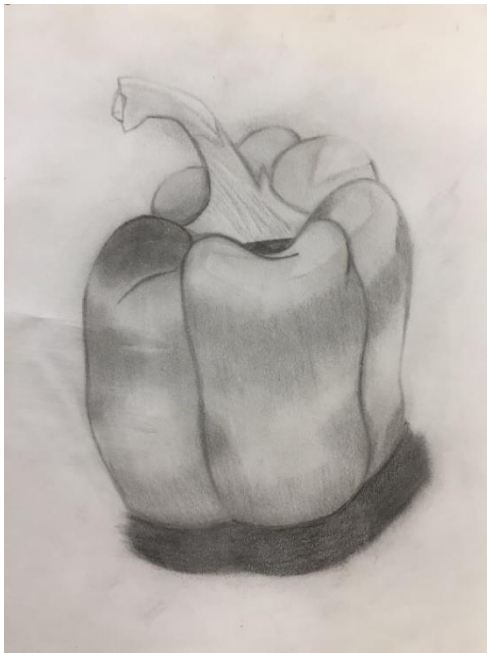
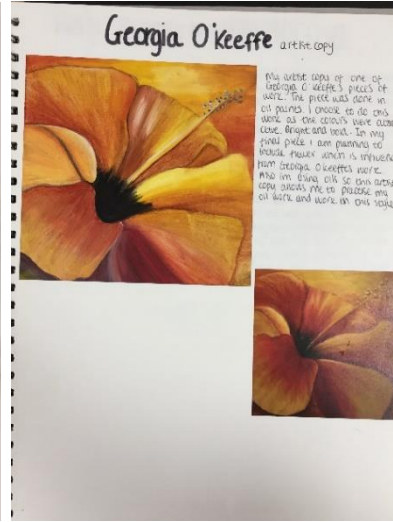
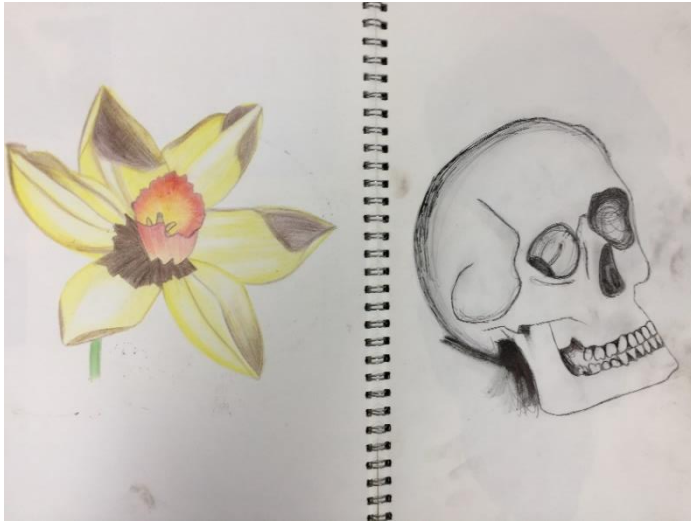
Component 1 Art, Craft and Design

Standard mark = 28

Keyword descriptors from the taxonomy:
Growing control

	A01	A02	A03	A04	Total
Mark	7	7	7	7	28
Level	3	3	3	3	3
	Just emerging competent ability	Just emerging competent ability	Just emerging competent ability	Just emerging competent ability	





Standard mark = 28

Standard mark = 28

Keyword descriptors from the taxonomy: Growing control

	A01	A02	A03	A04	Total
Mark	7	7	7	7	28
Level	3	3	3	3	3
	Just emerging competent ability	Just emerging competent ability	Just emerging competent ability	Just emerging competent ability	

Comments:

- There is evidence that knowledge, understanding and skills are generally adequate, but safe.
- The development of ideas through investigation are deliberate and methodical.
- The candidate shows a simplistic and tentative ability to explore ideas through a process of experimentation and review.
- There is evidence of a growing control of the formal elements through drawing and painting.
- Annotation of ideas is superficial, but relevant to intentions.
- The candidate's personal responses show emerging competence in the understanding of visual language.