

3.

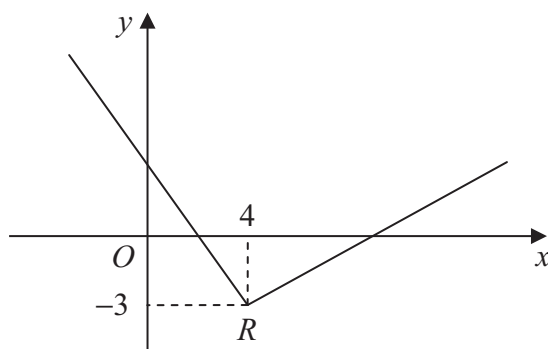


Figure 1

Figure 1 shows part of the graph of $y = f(x)$, $x \in \mathbb{R}$.

The graph consists of two line segments that meet at the point $R(4, -3)$, as shown in Figure 1.

Sketch, on separate diagrams, the graphs of

(a) $y = 2f(x+4)$, **(3)**

(b) $y = |f(-x)|$. **(3)**

On each diagram, show the coordinates of the point corresponding to R .



Question 3 continued

Q3

(Total 6 marks)



BLANK PAGE

