

Write your name here

Surname

Other names

Centre Number

Candidate Number

Edexcel GCE

Geography

Advanced Subsidiary

Unit 2: Geographical Investigations

Friday 22 January 2010 – Afternoon

Time: 1 hour 15 minutes

Paper Reference

6GE02/01

You must have:

Resource Booklet (enclosed)

Total Marks

Instructions

- Use **black** ink or ball-point pen.
- **Fill in the boxes** at the top of this page with your name, centre number and candidate number.
- Answer **ONE** question in Section A and **ONE** question in Section B.
- Answer the questions in the spaces provided
– *there may be more space than you need.*

Information

- The total mark for this paper is 70.
- The marks for **each** question are shown in brackets
– *use this as a guide as to how much time to spend on each question.*
- The quality of your written communication will be assessed in ALL your responses
– *you should take particular care with your spelling, punctuation and grammar, as well as the clarity of expression.*

Advice

- Read each question carefully before you start to answer it.
- Keep an eye on the time.
- Spend approximately 5 minutes planning and 35 minutes on Section A and 35 minutes on Section B.
- Check your answers if you have time at the end.

Turn over ►

M35966A

©2010 Edexcel Limited.

1/1/1/1



M 3 5 9 6 6 A 0 1 2 8

edexcel 
advancing learning, changing lives

SECTION A

Answer ONE question in this section.

Indicate which question you are answering by marking a cross in the box ☒. If you change your mind, put a line through the box ☒ and then indicate your new question with a cross ☒.

Candidates should use the resources provided, their own ideas and relevant fieldwork and research which they have carried out.

EXTREME WEATHER

If you choose to answer Question 1, put a cross in this box ☒ .

1 Study Figure 1.

(a) Suggest how the weather situation shown may lead to a range of weather hazards.

(10)

.....

.....

.....

.....

.....

.....

.....

.....

.....

.....

.....

.....

.....

.....

.....

.....

.....

.....

.....

.....

.....

.....



Handwriting practice area with 15 horizontal dotted lines.



(b) Describe the **fieldwork** and **research** you would undertake in order to investigate the **impacts** of a named extreme weather event.

(15)

A series of horizontal dotted lines for writing the answer.



Lined writing area with horizontal dotted lines.



(c) Using examples, explain how different **strategies** can be used to **reduce the impact** of drought.

(10)

A series of horizontal dotted lines for writing the answer.



(Total for Question 1 = 35 marks)



Handwriting practice area with 15 horizontal dotted lines.



(b) Describe the **fieldwork** and **research** you would undertake in order to investigate the **impacts** of coastal development.

(15)

A series of horizontal dotted lines for writing the answer.



Handwriting practice area with 25 horizontal dotted lines.



(c) Using examples, explain why managing coastal environments increasingly relies on a **spectrum** of approaches from 'do-nothing' to hard engineering.

(10)

A series of horizontal dotted lines for writing the answer.



(Total for Question 2 = 35 marks)

TOTAL FOR SECTION A = 35 MARKS



M 3 5 9 6 6 A 0 1 3 2 8

Handwriting practice area with 12 horizontal dotted lines.



(b) Describe how **lack of access to services** can help to create **marginalised** groups in **rural** areas.

(10)

Handwriting practice area consisting of 25 horizontal dotted lines for writing.



Handwriting practice area with 15 horizontal dotted lines.



(c) Describe the **fieldwork** and **research** you would undertake in order to investigate the success of strategies to reduce **rural** or **urban** inequality.

(15)

A series of horizontal dotted lines for writing the answer.



Handwriting practice area with 25 horizontal dotted lines.

(Total for Question 3 = 35 marks)



Candidates should use the resources provided, their own ideas and relevant fieldwork and research which they have carried out.

REBRANDING PLACES

If you choose to answer Question 4, put a cross in this box .

4 Study Figure 4.

(a) Suggest how the information shows that some seaside towns are in **greater need** of rebranding.

(10)

Area with horizontal dotted lines for writing the answer.



Handwriting practice area with 15 horizontal dotted lines.



(b) Describe how some places have used sport and leisure as a **catalyst** to 'kick-start' rebranding.

(10)

A series of horizontal dotted lines for writing the answer.



Handwriting practice area with 12 horizontal dotted lines.



(c) Describe the **fieldwork** and **research** you would undertake in order to examine the success of rebranding solutions in an **urban** or **rural area**.

(15)

A series of horizontal dotted lines for writing the answer.



Handwriting practice area with 25 horizontal dotted lines.

(Total for Question 4 = 35 marks)

TOTAL FOR SECTION B = 35 MARKS
TOTAL FOR PAPER = 70 MARKS



BLANK PAGE



BLANK PAGE



BLANK PAGE



Edexcel GCE

Geography

Advanced Subsidiary

Unit 2: Geographical Investigations

RESOURCE BOOKLET

Friday 22 January 2010 – Afternoon

Paper Reference

6GE02/01

Do not return this Resource Booklet with the question paper.

Turn over ►

M35966A

©2010 Edexcel Limited.

1/1/1/1



edexcel 
advancing learning, changing lives

Figure 1 Weather situation Monday 10 March 2008

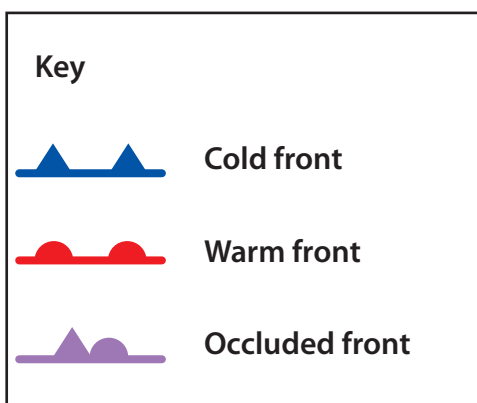
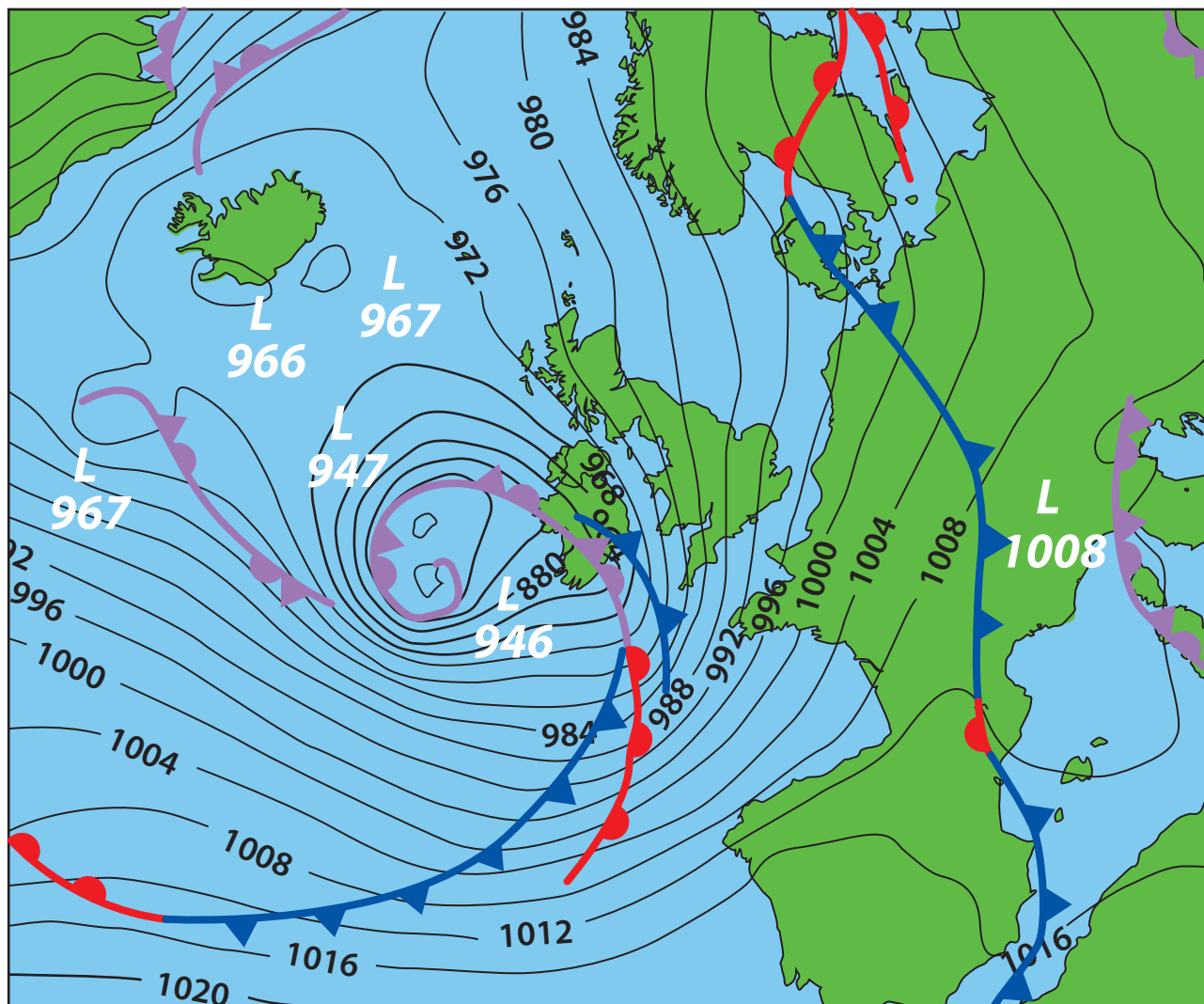


Figure 2 Contrasting resorts: Great Yarmouth, UK and Alicante, Spain

Great Yarmouth, UK

A traditional Victorian seaside resort in eastern England with a population of approximately 90,000 (2006).

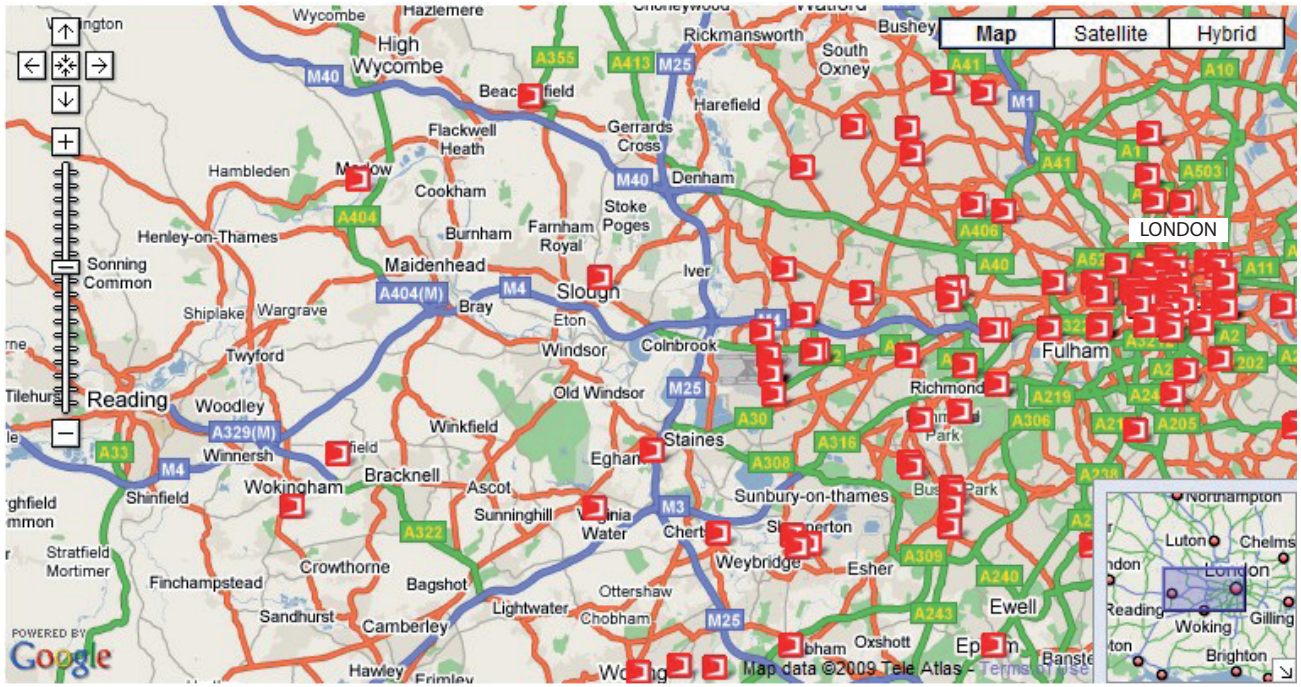


Alicante, Spain

A historic fishing village in south east Spain, now a fast growing tourist- city with a population of about 325,000 (2006)



Figure 3 Digital map of BT Openzone wi-fi (wireless internet) access points.



10 km

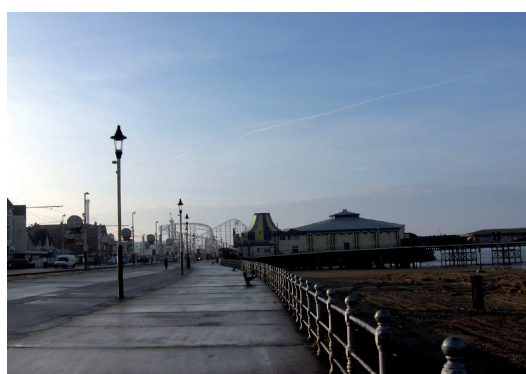
250 access points in total
BT wi-fi access point

(Source: BTopenzone)

Figure 4 Economic data for selected seaside towns in England, 2007



Seaside town	Male average hourly earnings (£)	People aged over 60 (%)	Working age benefit claimants (%)	New migrant workers (%)
Skegness	9.00	34.0	20.5	2.0
England average	11.80	24.2	11.2	3.8



Seaside town	Male average hourly earnings (£)	People aged over 60 (%)	Working age benefit claimants (%)	New migrant workers (%)
Blackpool	10.70	26.3	15.8	1.0
England average	11.80	24.2	11.2	3.8



Seaside town	Male average hourly earnings (£)	People aged over 60 (%)	Working age benefit claimants (%)	New migrant workers (%)
Lowestoft	9.50	26.0	15.9	4.0
England average	11.80	24.2	11.2	3.8

(Source: England's Seaside Towns: A 'benchmarking' study (2008))

BLANK PAGE

BLANK PAGE

BLANK PAGE

Every effort has been made to contact the copyright holders where possible. In some cases, every effort to contact copyright holders has been unsuccessful and Edexcel will be happy to rectify any omissions of acknowledgements at first opportunity.