



Pearson

GCE A Level Advanced Art and Design

**Photography
Component 2**

BRIDIE

Total Mark 11

	A01 Develop	A02 Explore and Select	A03 Record	A04 Realise
Mark	2	3	3	3
Performance Level	1	1	1	1
			Total out of 72	

Introduction

To start this exam piece of 'Truth, Fantasy and Fiction' I am really happy about this topic title because I know all of the possibilities of what I could study that work with this title. I want to make a decision early on whether I am going to look at figures or not and I think that I am going to because I haven't really done much on them before and I know it's a place where I would be able to experiment and explore where I haven't been before. I didn't look at figures in my coursework topic so it's quite nice to have this change and learn some new techniques and find out some new things looking at figures. I want to look at how things can be distorted in the figure. I will be looking along the lines of seeing the fantasy of a figure by distorting them. I want to have this as a starting point because I know that I could create some really interesting images out of it and bring something creative to start off this piece. The only downside to this is that I know it's quite predictable but as it's only a starting point I think it's ok to have it. Also I know that I can look forward to what this could lead onto. I would like to explore figures and their simplistic forms because this is something I think is really interesting and imaginative to study something that we can't really see as it's the inside structure of a human. Some of the artists I think I might look at are Antony Gormley because I love what he does with figures and putting the different textures into them in different shapes and forms. Overall I am really excited to look at figures and explore and push the ideas through this topic and experiment in new places I haven't been before.

First shoot

As a first photoshoot I wanted to start with something a bit different to just a normal photoshoot which I then took enlargements from and started to think where it looked like my topic was going to go. So I started looking straight at a point which I chose, I thought the idea of looking at the fantasy of superhero's and how they are something which is made up but people are wanting to believe they are true and the things they do. Usually they are coming up in films where people still view them as if they are actually true. They are never normal people either, usually they have some sort of power which makes them different from everyone else and they become a superhero. I think this is why they are such an attraction to people viewing them. I wanted to look into an idea which takes the superhero's and put them in ordinary situations. For example in this shoot I looked at taking the superhero which was my model dressed up as iron man and I took an animation of him making a cup of tea. I thought this was one of the most simple, everyday thing that could be done. I didn't focus too much on the image quality I just wanted to get a strong idea of what I am looking at in this photoshoot. Also the idea of doing an animation I thought it would get the message I wanted to across even more, here are a few images of the animation.



Artist Evaluation

The artists I am going to evaluate are Joss Whedon who was born on 23rd of June 1964 and is now aged 51, he is known as a director of films and the film I am going to be looking at is Avengers Assemble which he directed. Alongside him I am going to be studying Stan Lee who was born on the 28th of December in 1928 and is 93 years old today. The reason why I have chosen these two artists is because Stan Lee was the creator of the super heroes in the movie that Joss Whedon directed which is called Avengers Assemble.

The film Avengers assemble is about stopping a bad guy who has a sceptre which is where he gets all of his power from. The bad guy has a whole army which is of aliens in space which he wants to bring down using the sceptre and destroy mankind. The avengers are the team of superheroes which a boss has brought together to try and defend mankind and defeat the bad guy. The team involves the Hulk, Iron man, Captain America, Thor, Hawkeye and Black widow. These are all super heroes which Stan Lee has created. This team gets put together by the boss and is old to fight off the bad guy and stop him from taking over the world. They have to fight him off and his army of aliens off in many different ways which all feature using their super powers, this is where I think it has been so well made.

I think that throughout this film Whedon is trying to keep the viewer interested the whole time, usually in super hero films they can quite often die down in places and people only want to see the action, for example just the fighting scenes but in Avengers I think they manage to get the balance between action and theory absolutely spot on. In this film when their isn't action going on they are keeping the viewer interested by having small key bits of information in the film, little things which are going to be so important to the film which without it you would lose the plot of the film. Also something I noticed about this film which I have had to take a lot of interest in recently is the angles which they are filming from. This makes such a big difference to the overall outcome of the film. Obviously when they are filming in a room which is a normal height for a room they film from head height which makes the viewer feel as if they are in the film with them discussing what they are talking about. But if they filmed the whole film from head height it would become incredibly boring. I have learnt this from doing a shoot which will come later on that quite a few of the images come out really boring because they were just shot from head height. I love the way that this film has been taken, they have filming points from all over and the camera is very rarely just still when something is going on, it would be constantly moving whether it's on big boom stands or on a frame which is on wheels. These angles give the film a lot more interest.

Obviously because it's a film there are many moods throughout it, you mainly get the feeling that it's a very tense and exciting film in places but also very serious. I think it moves throughout these moods very well, for example they could be getting ready for battle with each other and that would be a very serious but exciting moment for viewer to see what's to come. The film has a happy ending with the team defeating the bad guy and his army and they all celebrate the success, which is always kind of expected in a film like this but just before they had succeeded iron man almost dies which puts the viewer on edge because that wouldn't be expected, I think that Whedon has done this very well with making the viewer think he's going to die and doesn't. This makes the story a little bit less predictable and more exciting for the viewer.

This work for me is going to be quite a big point in my project, because it's a starting point I have quite a lot to say about it, my first shoot was an animation about a model dressed up as iron man and he came into my kitchen and made a cup of tea for himself. This was because I wanted to take the super hero fantasy out of it and make it into something that you would usually see iron man do. The idea was to make a super hero act like a normal human being. I quite liked the animation but it wasn't an idea I really wanted to push on with but because I had chosen the super hero theme to start I could work out that it is something like a childhood dream, every kid wants to have super hero powers and this is where I think I want to explore my topic, I think that I can move on to look into things which everyone aspires to be like. This involves aspirations like being rich and successful, maybe someone like bear grylls, who is fearless. Things like owning a nice car, all of these ideas are possible shoots for me to continue with.

Enlargements 1

The idea of this shoot was to try and capture the comparison between the person trying to be like his childhood dream of a super hero and the normal person. I also wanted to explore the idea of the boy trying to explore what it would be like to be a superhero and how he would probably act and think he's on top of the world after feeling like the mask is making him change to a different person all together.



This first enlargement was an image I took in the shoot which related well to what I was saying with the shoot. For example on the left is the model which is dressed up with the iron man mask on and the right is a model just in her normal clothing, this was to show the relation between the person wanting to be like the super hero and the normal person. The composition of this image was quite important, having the two chairs together made it quite hard to have a composition which involved the golden section. So I decided to make it more central having the two chairs in the middle of the image across the foreground. The focal point would be the eyes or the mask which is almost in the top left golden section. The part which makes this image interesting is the light coming through the windows on the right, this obviously shows the light coming from the right side which you can see from the girls face in the image.



This second enlargement I took as a head shot basically, because I wanted to show detail into the mask but also in comparison of what the model was wearing. Going in close on his head was to try and focus all of the information on him and get it close enough to the camera that it would make the background of the image quite blurred which would give a good depth of field for the style of image. I wanted to try and create a piercing image through the models eyes, obviously there are eye slits in the mask which you don't see his eyes from a distance you just see the blue around it, but in this image you can just see the eyes through the mask which adds interest to the image.



This last enlargement was quite a big experiment which I chose to do that I'm happy with and I feel it paid off so its worthy of putting it in my flip file. The image itself is nice having the head of the mask in the golden section of the top left and it also being the focal point. Also the way that he is positioned on the left side of the image and the wall with windows slopes down form the right towards the back getting narrower as it goes into the distance. This composition really appeals to the viewer, the filter I put on it was try and create the idea of it being more comical and as if someone's drawn it like they would have creating this figure and animation like image.

Interim

At this point in my topic I feel it's a going to be a bit of a moving point, I want to change my path quite a bit so I felt as if it would be a good place to put my interim. Even though its quite early on in this topic I feel like I'm ready for a movement. So far I've looked at super hero's mainly and how they can still do normal things . For example my first shoot was an animation of my taking a model and dressing him up in an iron man costume, I then did a stop animation of him making a cup of tea which is something you would do every day. This was taking the irony of having something so super natural and only something you would compare to doing super human things to making a cup of tea which is one of the most normal things that every day people do at least once a day. After this shoot I was a little bit more repetitive but I felt like it was moving my ideas forward anyway. This idea was to have a male model in normal clothes but wear an iron man mask, this was to create a similar idea to have the normal person wanting himself to be a super hero, I also compared the model to a female model which was something I had been wanting to look into because it experimented with something as I had only looked at males so far.

This is where I now wanted to move my ideas quite dramatically, I wanted to change the idea from super hero's to looking at real life people but still staying on the idea of things that people wanted to be or look up to as a child maybe. I really like this idea and I felt that it would be somewhere I wanted to push my ideas forward and look into. Also there is countless things that people would aspire to be like when they were younger or even as an adult most males still want to be something they're not. I want to explore these ideas and role models people want to be in their life. I am mainly going to look at males and keep along a more masculine route which I think is going to be more interesting and direct than looking at these role models and dreams of males and females. Some of the things that I think I will look into are all kind of focused around masculinity. These things could be anything along the lines of a figure like Bear Grylls who is a survivor in the wild, he shows great masculinity an bravery which I think I could resemble in a photoshoot. Other things I think I could look at is the idea of someone being in power of people. I mean this like someone who runs a business or is high up in a business, this is something I think lots of males want to be in their life time. This will quite often lead to being well off as a person, usually someone in power or high up in a business is going to be wealthy, I would love to represent this in a photoshoot, I think that I could get some really slick and sleek images from looking into an idea like this. Another idea that is commonly supported by masculinity is sport, this is something that I would love to look into myself as I'm a big fan of many sports, this could end up being a really nice topic which links really fluidly throughout. Pushing my ideas forward from here I really want to look into masculinity and what it actually is and how its represented in different ways.

Enlargements 2

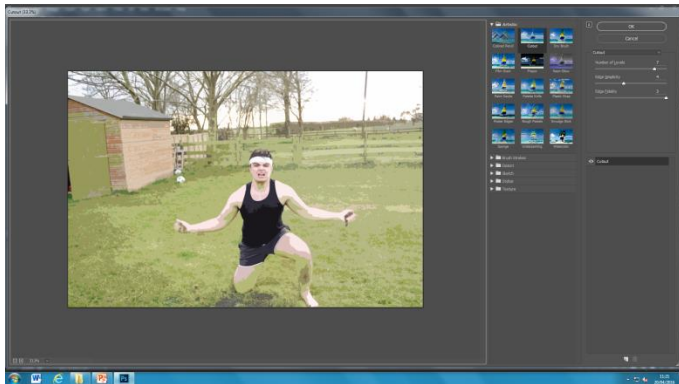
The idea through this shoot was continue to look at things which might inspire men or children to be. One of the things I looked at was a figure which is similar to the known survivor Bear Grylls. I know that lots of kids really want to be able to do the things that he can so I took a model and went into a field and took images of him acting like Bear Grylls has done in the past, for example here putting mud on his face for camouflage.



The image on the left is the original that I took and the one on the right is of my final image I chose to have. I like the image as a whole for example the way that the model is putting the mud all over his face to blend in, this image was taken while the model was moving which I think captures it better than if it was a still. I think the tones look better in black and white which is why I chose to have it in black and white. It looks a bit more rustic and the mud on his face looks better with the darker tones especially with the white rag around his head.



This second enlargement was one of my favourite from the shoot. for starters the clarity of the image is spot on, I captures the focus perfectly which you can see by the detail on his face and hair. Also the composition it better having the focal point of his face in the top right golden section. Also the focus from the model isn't on the camera, it's on putting the mud on his face and looking away from the camera adds interest to the image, kind of performing the classic stance you would imagine seeing. I took this image crouching down so I was eye level with the model which I think was a key aspect to catch this image. The depth of field also is interesting because although its not focused you can still see what's going on in the distance and it adds clarity and focus to the model also getting an idea of his surroundings.



The image on the left side is the original image I took and the one on the right is what I have changed it to for the final enlargement. The reason why I decided to change the colours a bit and give the affect I did was because the colours on the left image don't really work, the image is nice but just not as good colourings as I would have liked. Also this was because it was a little bit over exposed, this meant that he came out too white but I could then use these tones to my advantage when I decided to give it this affect. In the filters on photoshop, the affect gave it more interest and how I would image it to look a bit more camouflaged and also like you would see in a cartoon which related to my previous shoot and enlargements.



This final enlargement is more of a portrait image that relates to the artist I am looking at next which is Sam Taylor-Johnson and her series of crying men. This image relates to the portrait view of her images I am going to study because it's a portrait image itself. This is something I haven't really looked at yet but I know its something I am going to look at next. Which is why I have left this enlargement to the end, although its not identical it's the same style of portrait images which moves my topic on really well. The idea that I am going to study next is moving on the idea that men are trying to aspire to be things that aren't really that easy to be or even possible.

Sam Taylor-Johnson

The artist I am going to evaluate is called Sam Taylor-Johnson she was born on the 4th of March 1967 and it now 49 years old. She was born in London and studies at Goldsmiths, university of London, her occupation is a film director, artist. The piece of work I am going to study is one shot taken out of a series which she did in 2002-2004 which shows grown men crying.

The shot that I am going to take out of this series is a photograph of Daniel Craig which she took in 2003, this shot is of him sitting forward in a leather armchair and he's resting on his knees with one hand hanging down in between his legs and the other hand up against his mouth/nose as if he's wiping his nose or has been biting his hand. He is looking to the right of the camera and has tears in his eyes and running down his cheeks. This is obviously an image of him crying, he's wearing a black shirt with a dark jacket over the top. The focal point is his eyes as his head is in the top left golden section and there is light gleaming through down half of his face which add attraction to his face.

This work is from a series she did of grown men who are already or upcoming movie stars which are living the childhood dream in Hollywood and these images show them being in touch with their emotional side and showing almost some irony that they don't always have the perfect lives and they do have low points in their life. Also I took Daniel Craig from this series because he's so well known for being James bond which is playing a roll of someone who is really tough and gets all the ladies while killing bad people, this appears to be a roll which many children and even grown men aspire to me. I think that's why this image means even more because it's so unlikely to see him cry, I don't think he's ever cried in any of his movies which is why it's so odd to see him emotional.

I think this composition has got a lot of impact, the way that his head has been placed in the golden section of the top left corner and then his body fills out the rest of the image especially down the left side brings good composition to this image. His head is obviously where the focal point is because Taylor-Johnson wants the viewer to see that he's crying and the fact he has blue eyes which are just out of the light on his face brings even more attention to this image. This image is 38.88 x 38.88 inches which is square, I think that adds more impact to the image because it's something different than the usual portrait image. This image is quite large too which I think is better because his eyes being the focal point are quite small on the page and having a big image would make it easier to see them and bring them out as the main focal point of the image. The lighting was coming from the left behind the camera and I think that it was coming strongly through windows because it looks like natural lighting not staged lighting and there is a clear line on his head which is where the light has stopped coming through, I think that this lighting adds impact because it adds interest where the light is on him in places and not in others. I think that it makes the image more striking and piercing.

The mood of this piece is obviously very sad and emotional which I think Taylor-Johnson has captured really well and I think the reason why she has chosen to make the piece so big is because it makes it more striking and more impacting this again adds to the affect of the mood. The lighting also adds to this mood really well by giving like a serious but sharp and controlled lighting which appears to be natural as well. The depth of field in this piece works really well because you can see that he's in what looks to be an empty room but the background is blurred is just looks like he's sitting on his own which adds even more to the mood, all of these small things bring the piece together really well which makes it a more striking piece.

For me this piece is something I haven't looked at before and I think it's really good for me to explore out into new things working with portraiture and I think it could be something that really pushes this exam topic forward and makes it a really nice piece. I think I will try looking into something like Taylo-Johnson has done here and see how it works for me, I really enjoyed looking at this piece and I think Taylor-Johnson has inspired me to try and do work like this.



Enlargements 3



In this first enlargement I am looking at the idea of the successful business man and in this image it clearly represents that, for example having the trophies in the foreground of this image and in the focal point represents the success of the image but then having the model who is the successful man in power of the height of his role in the background. The pose he's holding is quite a powerful one with the strong hand position on the desk and the other one with the pen in. Also the fact that he's looking at his work shows the idea that he is obviously hard working to get to the place he is. This also adds to the success of the image.



In this image I am trying to represent a story by looking at the classic student waiting outside the head masters office looking as if they're about to get in trouble. This is quite a nice image because it really tells the story well inside the image. I have chosen to focus the person in the foreground because he's the one who's getting in trouble and the head master in the background you can clearly see what it set out in their with it still being blurry. I also love the way that there is a really strong depth of field which I think makes it such a more interesting image. over all I'm really happy with this image as an enlargement and I felt like this experiment paid off.



This final enlargement was probably my favourite one of them all, this image really relates to what I am trying to say with this shoot, I wanted to show how the head master has so much power and control over most people especially his students, I wanted to do this by showing how the student show him respect too. This image shows the head master standing up tall and is obviously looking down on the student which raises his power and the stance he is performing with a really strong hand gestures on the table.



These image throughout this page are all adverts for watches and cars. You can obviously see there is a connection throughout these images that they are all really smart and masculine in the way that they are represented. This is achieved by the stern faces and clean cut looks with the crisp lines and smart lighting of the cars. Also the poses performed on here are all really masculine, hands in pockets, crossed arms, these are all things I will be looking at. I want to try and study this type of work and look through images like this and get ideas to try an re-create images in a photoshoot with a model in this type of way. I have Got a model set up and a car to try and achieve this type of 'advertising' I think the light is going to be very important because of the way that it could reflect on some really sharp and clean images or if its dull it could come out a bit grainy and on images like this I need the best lighting possible as I cant achieve this on a studio shoot. I'm really looking forward to this as it could create some really nice enlargements for my exhibition.





Enlargements 3

This series enlargements were from a photoshoot which I took to do with the masculinity and I wanted my images to look like they were done for a magazine shoot. I think I really captured this idea with the images I took. I needed these images to be really appealing to as something they would want to strive for so I took a model in a suit with a really nice car and also a nice watch to add to the suit and car. These are all things I think that men would want to aspire to be but also something that appears to be really masculine which is also a point I wanted to show.

This first enlargement looks like your kind of iconic magazine shoot. The fact you can see the nice watch with the hand holding the gear stick and also the shine off the steering wheel. The image has a really good depth of field too which helps bring interest to the image. the fact that you cant see the background and the wheel in focus I think makes it more interesting because you know what's there but you just cant see it. Also the watch face being crystal clear adds to the image and almost tops it off as a whole.



This image I really like and I think it's probably one of the strongest I have taken, the only thing I didn't like about this image is that the car light is slightly overexposed due to the shutter speed being a bit too slow and also the reflectiveness of the glass is reflecting the clouds above which therefore makes the reflectiveness look white instead of blue which does appear through in some places. The bright orange of the car in the foreground looks really appealing and having the model about to get into the car but the depth of field creates so much interest in the image. The fact that the front of the car is crisp clear and the background is blurred still captures the aspect of the masculinity within the image. The way that the image is set out with the model about to get into the car is representing a strong masculine image.



This image is quite an iconic magazine shoot, this was what I was aiming for in this photoshoot. I wanted to create images which are masculine and show something which people would look at and think that they want to be like this person and it's something to aspire to be. Here you can clearly see the car which the model owns and the interior of the car with the light gleaming through the window. This image is more about the actual car than the model which is something different and showing it from a different angle. The light is really catching the interior of the car in such a nice way as it shines off the steering wheel and it almost silhouettes the things in the car. There is also quite a good depth of field in this image as the foreground of the image is out of focus and the wheel is where the focus is at.



This last enlargement is probably my favourite one of the enlargements. This enlargement says pretty much everything I want to in one image it is a strong landscape image and the angle it was taken from really gives possibly the strongest angle I could find. The fact it was taken from ground level makes everything bigger and stronger including the car, it looks more impressive and almost angry from this level with the model in front of it and the lower angle from the model makes him look really masculine and more impressive especially in front of the nice house, This is a really textbook image.



Men'sHealth



The image on the bottom of this page on the right side is an advert for Hugo Boss and my teacher who is a female thinks that the image is really masculine and I disagree, I think that the image is quite feminine, this is the argument that I have wanted to look at throughout this stage of my topic. There is such a fine line between what females think is masculine and what males think is

masculine. I think the image just above this image is masculine which is the golfer on a golf course on a gloomy day when there is obviously wind and rain and he's battling the conditions on the golf course. That image created is for me a more masculine image instead of the one below which is an advert for after shave, this advert is of a model holding the after shave and the colourings are quite feminine with the white and reds. He also looks like he's a bit too feminine with his eyes looking feminine and his eyebrows been done nicely, he also has prominent cheek bones which I think is something that females would look for in a guy but what males don't think it that masculine. The way he is holding the after shave looks feminine too compared to the tight grip of the golfer. I don't want to find images that look like the one on the bottom I want to create images that look more like the one on the top showing what I think is a more masculine view.



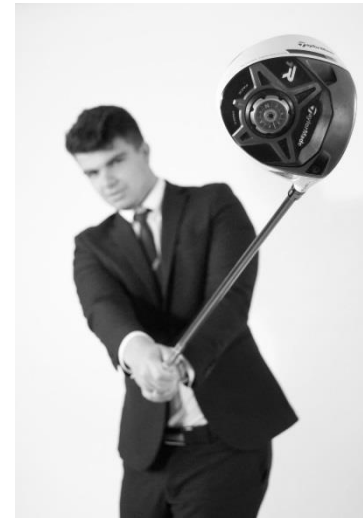
Exam Enlargements



This image to the left is something I made from layering the sequence of the golfer hitting driver, this is quite iconic and I did the shoot on a tripod and then used the lasso tool and took every golfer out of the images and put them layered into one image. The sequence of the golf swing works really well with the layered image also showing a complex image.



This image on the left was chosen from two images which were the same composition but one of them was focusing the golf club and the other had the model in focus, this was just to see what worked best. The one that had the club out of focus was the worse image because its in the focal point so it would be odd to not have the focal point in focus.



The image to the left is one of my favourite in this series, it really represents what I am trying to say and it is a strong image in itself, having the club in the focus and a golfer swinging in his suit which relates to the development I have had previously in this topic.



The images on the left are quite similar so I thought I would evaluate them together, they are both images where the golfer is on impact with the golf ball, this appears to be such a masculine image. The images are quite a strong action shot and also the way that they are both centred they add impact I think.



The two images to the left are again quite similar so I evaluated them together, the first one shows quiet a serious face and masculine stance with the golf clubs and the second one shows more of a happier face with the golf clubs that prove more of a pride thing which is also showing the masculine view.



The four images to the left are also images that are very similar, I decided to put them together because it made more sense than to try and evaluate them separately. All of these images I am trying to show some masculinity with also having the attraction of the golf clubs next to the model, these images looked better in black and white too.

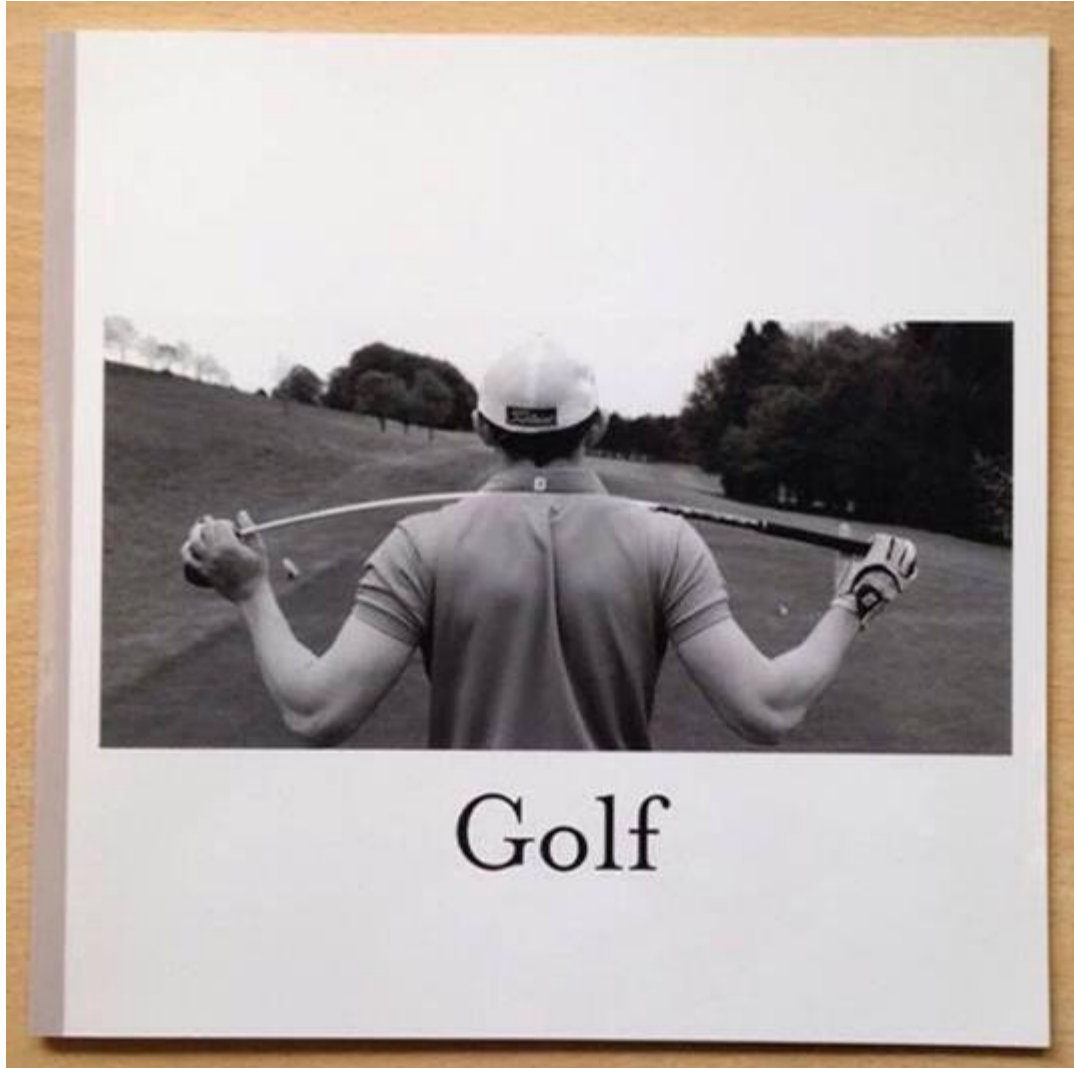


The image to the left is another one of my favourites in this series, it's a strong landscape with a strong centred composition and it relates well to the strong masculine man.



The image to the left is an image that I'm going to enlarge into an A1 print. This is because I really like the image and feel it resembles exactly what I needed to in this topic. The shoot I did for my exam worked really well for my final piece 'Magazine' but I also wanted some enlargements from the shoots because I felt it was a good finishing point in my topic with really strong images. This image was taken in a studio with a white background and I used this model in his suit to give a smarter approach to golf with more of a setup shoot. Instead of taking images of golfers on the course which I had already done I decided to put the model in a studio with a smart suit on but kept his golf clubs with him. The image itself was really strong compositionally because of the focal point obviously being the golf club in mid swing and having the body in the background. The part of this image which I really like is that it's a golfer doing a golf swing but at the same time he is also in his suit which brings a smart masculine approach to it.

Final Piece



The image to the left was just an image I took of my final piece so the viewer knows what to expect and look for in it. I had three models in this topic, two which I took onto a golf course and the other I did a studio shoot with. The model on the golf course was a model which was dressed like your typical modern golfer and I got him to play golf and also pose for some images I took. I also took a model in a suit and did a studio shoot with him getting him to pose with golf clubs. Both of these shoots were taken with the models trying to give a masculine approach and getting them to look as if they are strong and almost like role models. This final piece was supposed to be something that represented a magazine like piece but looking at the idea of a reality that isn't true which links to the topic heading of 'Truth, Fantasy and Fiction.' This was a perfect way to end my topic basically rounding up everywhere I have looked at.

Conclusion

To conclude this topic I wanted to explain what I've looked at through the journey and where it has taken me all the way until the end. Also what I have learnt throughout this topic. I started with an open mind and I wanted to explore different things and see what I could learn. I started to look into superhero's and how they are something that people kind of aspire to be in life and it's something that even though it isn't real people still believe it and would love to have the powers they do. This then led me onto looking at things that people would aspire to be in life and kind of looking at masculine appearances which is kind of where my project took off. I thought that I would look into different ways that men could be masculine and represent their masculinity. I ended up looking into sport and I chose to go with golf because I felt that this was something which was really masculine which related to the rest of my topic, after looking into wealth I thought that went well with golf because its quite a wealthy sport. The idea of this topic related to 'Truth Fantasy and Fiction' in the way that the ideas I've looked at of the almost imaginary lifestyles and ways of living is the fantasy of life. This is what I think is made to have been seen as the truth that things like this actually happen but they aren't realistic really. My final piece represented a really masculine way of looking at golf and I tried to represent the masculine way it is played and presented. This worked really well and I'm really happy with how my topic has planned out.