



Pearson

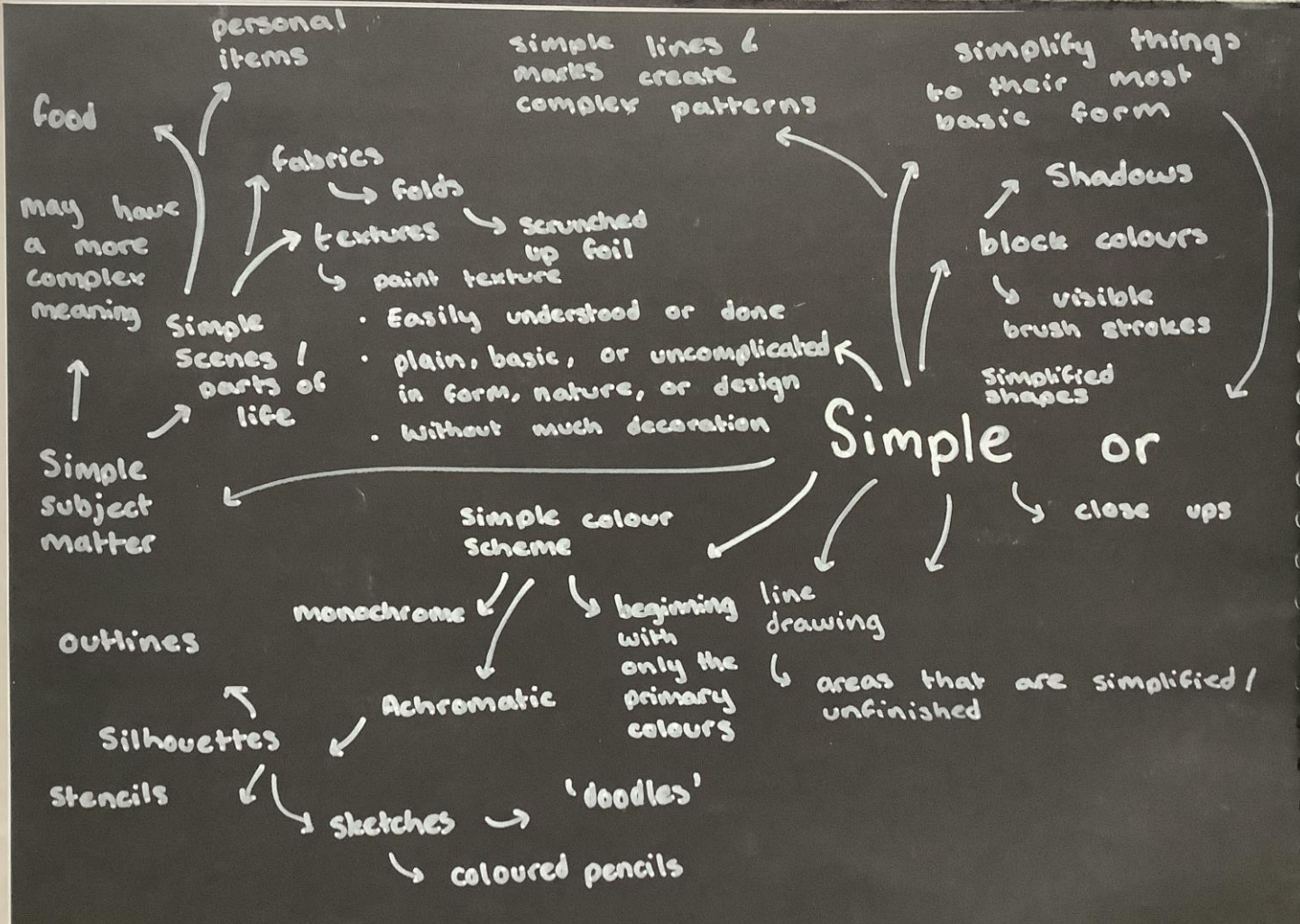
# **GCE A Level Advanced Art and Design**

**Fine Art  
Component 2**

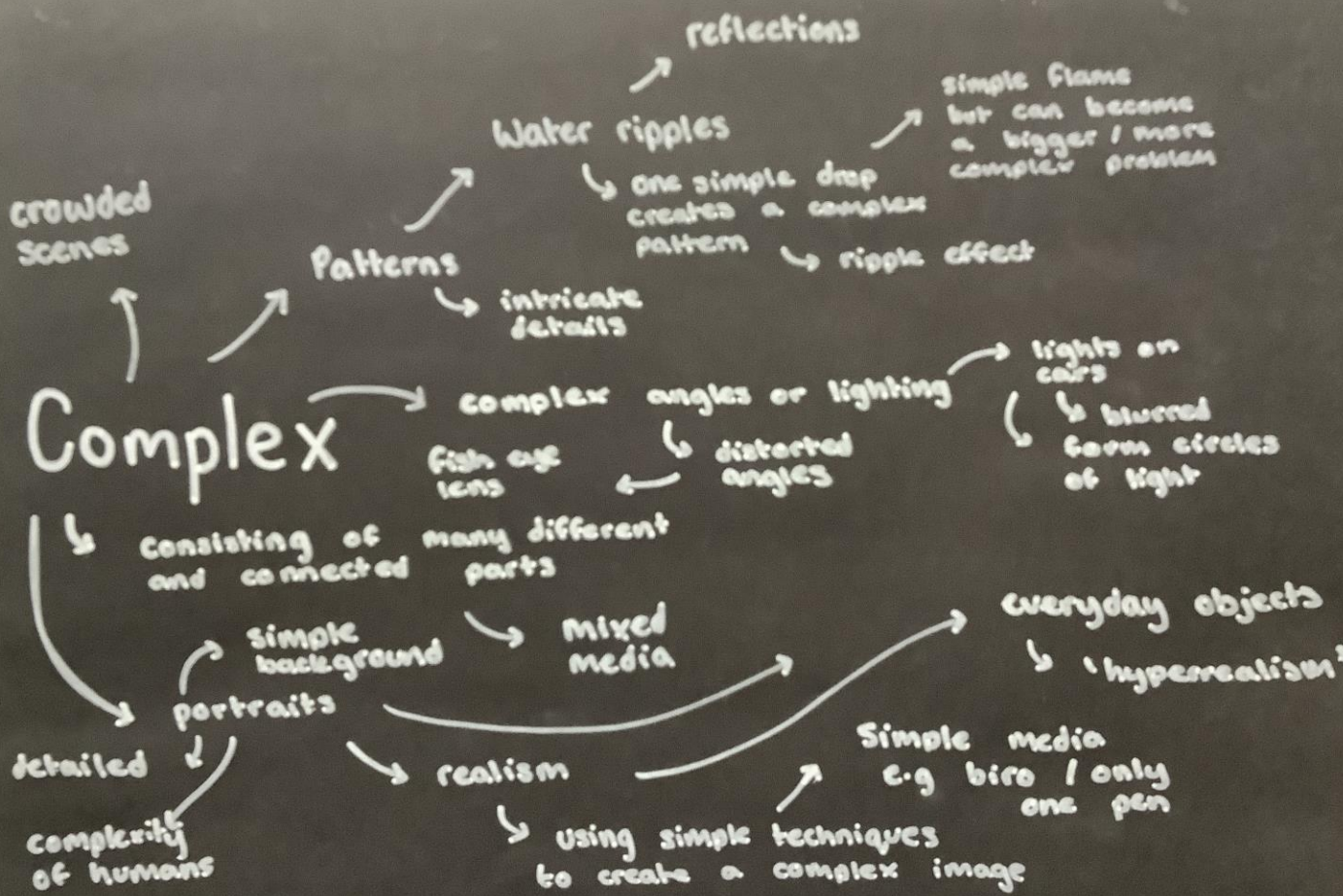
JAM JAR

**Total Mark 36**

	<b>A01 Develop</b>	<b>A02 Explore and Select</b>	<b>A03 Record</b>	<b>A04 Realise</b>
<b>Mark</b>	8	8	11	9
<b>Performance Level</b>	3	3	4	3
			<b>Total out of 72</b>	36

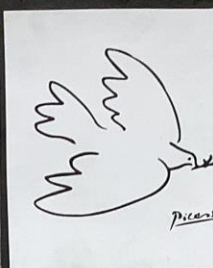


# Complex





↳ Everyday objects  
one focal point



Thick  
brushstrokes  
↓  
pale the  
knife  
↓  
Elena  
Gual  
↓  
line  
drawing  
↓  
Picasso



Doodles, sketches  
↳ illustration, simple  
figure  
↓  
not  
realistic



↳ Simple colourscheme  
Christina Traufa - outlines



↳ simple illustrations → of complex  
life



↳ Simple  
representation of  
people / atmosphere  
↓  
Hyper-  
realism  
↳ complex  
techniques  
simple  
objects



↳ simple technique to  
create setting  
Galsa  
Golchini

Initial Ideas



↳ Simple  
patterns  
↳ Monochrome  
simple  
medium e.g.  
1 coloured



↳ Silhouettes / Kara Walker



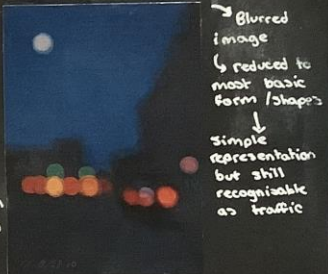


→ Joni DiPirro skill life  
→ Simple objects - complex meaning

→ CJ Hendry Hyper-realism  
Tjalf Spoor

→ Kate Brinkworth  
→ complex approach

→ Simple approach - doodles



→ Blurred image  
→ reduced to most basic form / shapes  
→ Simple representation but still recognizable as traffic

MY VISION  
'Every day'

→ basic simple objects in every day life

Jaye Schlesinger  
Sarah Graham



→ Kate Jarvic Birch  
Simple surface texture  
Water ripples - basic patterns

→ simple items  
Textures & folds



Every day scenes  
→ simple parts of life

simple figure  
not realistic

Initial Ideas

# JAYE SCHLESINGER

Visual artist specialising in oil and gouache paintings of common objects



• Schlesinger mainly focuses on still life paintings of common objects and has done so for 15 years

→ She creates photorealistic paintings, taking a simple subject and painting it in a complex and highly detailed style. She uses her skills and techniques to make the ordinary extraordinary.



↳ She often uses patterns and grids in her paintings as a 'reflection of her desire to find order in the randomness of life.'

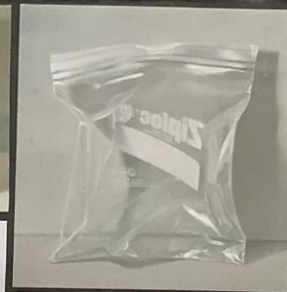


- She 'selects, amplifies, organises and simplifies' as part of her process
- She enjoys transforming 3D subjects on to a 2D surface

A lot of her pieces are symbolic and often respond to current events and sociological / cultural issues.

Although they are simple objects they have a much more complex meaning and are metaphors for universal themes.

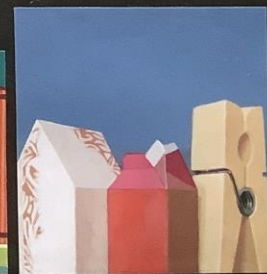
She says she is drawn to forms that have a strong geometric component and are solid and stable. This is one of my favourite aspects of her work. I admire her detail and precision used to paint folds and surfaces.



↳ 'The Ultimate Metaphor'

↳ This is one of my favourite pieces by Schlesinger. It is a really good example of how simple shapes, subject and background can be such a powerful statement.

→ She uses simple, geometric shapes to build up the shadows and form.





Recreation of  
'Three Party Bags'  
↳ gouache on paper

← This is my version  
of Schiesingers  
gouache painting

I enjoyed painting  
in this style and  
using Schiesingers style  
to paint still life.

I loved working  
with bright colours  
and am happy  
with my use of  
colour to create  
depth. I have successfully  
used different  
tones to create  
light and shadow  
to create the 3D  
form of the bags.

Next . . .

I plan to photograph  
some everyday objects  
to paint in Schiesingers  
style.





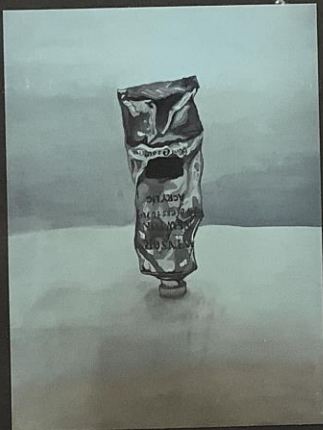
This is one of my most successful images from the photoshoot. It successfully showed the different folds in the texture of the surface.



I decided to take photographs of simple everyday objects in a similar style to Jaye Schlesinger.

I will use these photographs as reference photos to complete my still life paintings.

I used a lightbox to create shadows and show the shape and 3D form of the objects.



Although the material seems simple and one colour, painting it becomes very complex as it becomes many different colours.

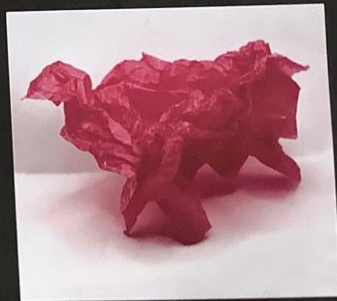
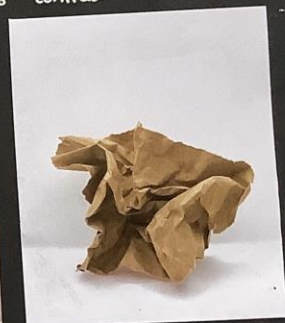
Different colours must be used to show areas of shadow and highlights.

I want to use these photos to help me understand this more.

# Photos

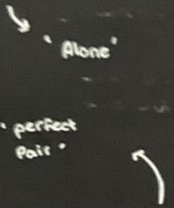
I photographed different materials crumpled up to create an interesting surface.

The lighting also helped to create a dynamic image and contrast between areas of light and dark.





Alone



perfect pair



'mismatched'



I also focused on how a simple object can have a much more complex meaning.

Many of Schlesinger's art pieces have a deep but ambiguous meaning. It is up to the viewer how they interpret the painting but Schlesinger speaks about a lot of her work being metaphorical.

Due to this idea, I have named a few of the images that I may use as painting references.

As well as focusing on textures and 3D surfaces, I also photographed other objects used in daily life.



I have taken this photograph as I would also like to explore painting branded products, similar to Schlesinger.

I will take more images like this later on.

- My next focus for the project is to focus on 3D surfaces and textures.
- How a simple object that is one colour requires many different colours when painted
- I will work from these images and focus on some 'zoomed in' close up images to allow me to see and understand the complexities of the intricate details.



These are four of ten →  
 Screen prints of  
 Marilyn Monroe by  
 Andy Warhol in  
 1967 - each piece is 30x30" and a  
 close crop of her face.

## ANALYSIS

**Background:** These prints were produced a few years after the iconic actress Marilyn Monroe passed away to immortalise her in her prime.

**Composition:** Each print is a large close up of Marilyn's face, emphasising her famous beauty and focus the viewer's attention on her iconic looks.

Andy Warhol also uses a lot of repetition to present her celebrity status and how she is seen everywhere.

**colour:** Warhol used bright colours to reflect her lively personality and emphasise her iconic features. He often uses yellow to colour her hair as she was known for her platinum blonde hair. These vibrant colours also create a playful, energetic mood, reflecting her personality.

**Interpretation:** I believe that Warhol has repeated the image of Marilyn Monroe in varying colour ways to reflect the different aspects of her personality and the different perspectives people have of her.

I am going to take inspiration from Warhol's approach to colour, to create a playful mood.

Warhol was a leading figure in the pop art movement in the 1950s and 1960s.

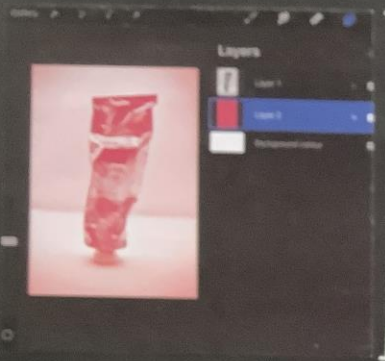
It began as a rebellion against traditional art forms and is characterised by:

- Recognisable imagery - images & icons from popular media & products
- Bright colours
- Irony & satire
- Innovative techniques e.g. printmaking
- Repetition of images

It also followed themes of realism, every day (mundane) imagery, and irony & wit, making it perfect to explore whilst I look at every day objects / items.

## POP ART

# ANDY WARHOL



Warhol's work inspired me to edit one of my images using procreate to replicate his simplified colour palette. I experimented with different effects, creating a monochrome image. Then I coloured the different areas with specific colours to add depth and create a more dynamic image.

I love the bright, vibrant colours used by Andy Warhol and how they add a playful element to these images.

However, some of the tones he uses clash with each other and I would prefer for my work to be more coherent.



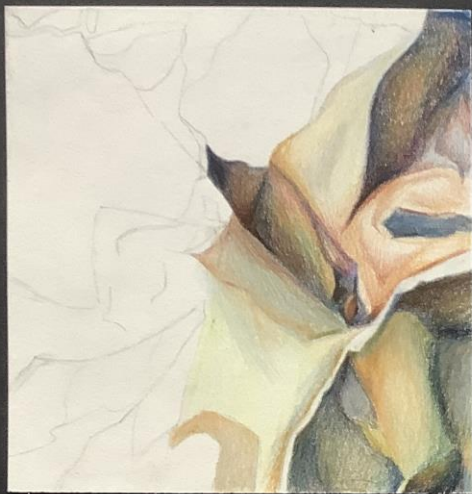
I then reflected upon Warhol's work and replicated the colours used in his screen print collection of Marilyn Monroe.

So I have use procreate to create and combine some more, lively colour palettes and create an energetic feel.

I then selected 4 of the images to pair together as their contrasting colours complemented each other well.

I am also going to focus on creating these textures / surfaces shown in the images. To create a believable 3D image.





I focused on the use of colour and how I can use different tones to create a more dynamic piece. Using warmer tones for highlighted areas and cooler, darker tones to represent shadows. However I felt restricted by the limited colour palette as I couldn't mix specific colours. I also prefer the blocky effect created by painting shapes with gouache instead of blending.

→ Coloured pencil study of crumpled brown paper

## Material and Surface Texture Studies

- I have completed studies on the folds and areas of light and dark to represent a 3D surface
- I experimented with coloured pencil, pencil and gouache to focus on different techniques and formal elements

I completed a pencil study to focus and improve my use of light & dark to create a 3D form

I found this too time consuming and also prefer being able to use vivid colours of paint

← Pencil study of crumpled brown paper



...nting this, I realised that  
have been easier to  
the gingham effect by  
translucent medium e.g  
our. This would have  
me to layer the overlapping

gouache painting  
of gingham  
cloth

gouache study of  
a tea cup

The gouache paint allowed me  
to create the smooth  
surfaces.



# Material and Surface Texture Studies



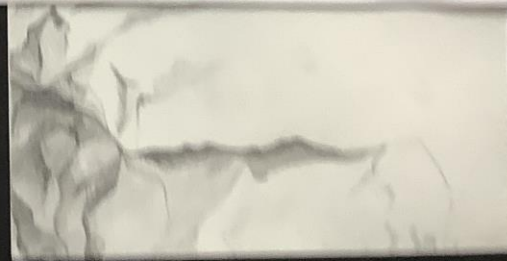
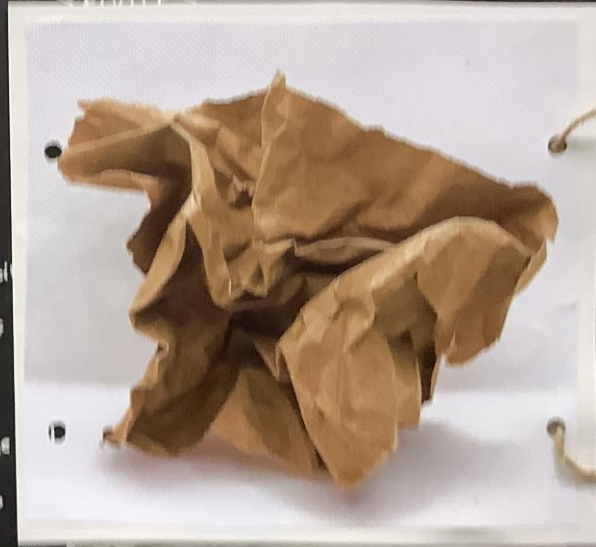
Coloured pencil study of crumpled brown paper

I focused on the use of colour and how I can use different tones to create a more dynamic piece. Using warmer tones for highlighted areas and cooler, darker tones to represent shadows. However I felt restricted by the limited colour palette as I couldn't mix specific colours. I also prefer the blocky effect created by painting shapes with gouache instead of blending.

I completed a pencil study to focus and improve my use of light & dark to create a 3D form

I found this too time consuming and also prefer being able to use vivid colours of paint

Pencil study of crumpled brown paper



Whilst painting this, I realised that  
it would have been easier to  
create the gingham effect by  
using a more translucent medium e.g.  
This would have  
layer the overlapping

gouache  
of gingham  
cloth



↑ gouache study of  
a tea cup

The gouache paint allowed me  
to create the smooth





Whilst painting this, I realised that it would have been easier to create the gingham effect by using a translucent medium e.g. water colour. This would have allowed me to layer the overlapping stripes.

gouache painting of gingham cloth

I really enjoyed painting using the vibrant colours in this image

gouache study of a tea cup

The gouache paint allowed me to create the smooth surfaces.





## COMPOSITION

I have replicated the composition used by Andy Warhol but I don't think that this is pleasing to the eye

Instead I would either present a single image or if displaying a group, I would present it as a line of three.

This created a poster style effect, similar to the pop art movement

I really liked the simple but bold style of this so have experimented with other colour combinations

I then edited out the background, using procreate. Removing the shadows and varying tones from the background focuses the eye on the subject

## MONOCHROME

Although I loved the appearance and mood of Andy Warhol's Marilyn Monroe collection, I would prefer for my work to have more coherent colours that are pleasing to the eye. So I have used editing software to experiment with alternate colour ways.

a group, I would present it as a

This is due to the compositional rule named the 'Rule Of Threes' which states that when objects are grouped in odd numbers (particularly threes) it is more appealing and pleasing to the eye





## Experimentation with colour combinations.

Instead of creating a monochrome image, I experimented with contrasting colours and tones.

This contrasted the subject from the background and created a more striking image.

I found that using complementary colours on the colour wheel where particularly effective.



Next, I am going to enlarge this image to create a poster.



I then experimented with simplifying the images.

I kept the vibrant colour combination but created a silhouette of the paint tube.

This created a very modern and contemporary feel to the images

I placed them in a grid, similar to Andy Warhol's work and how he uses repetition in his art.

I think that this would create an effective background with a larger & version in detail in the foreground.



# SIMPLIFY

ery  
emporary  
nages



## BACKGROUND IDEA

→ I used the simplified silhouettes to create a background, digitally. But due to the vibrant colours, it distracted from the foreground



I then used procreate to create a faded effect similar to transfer.

using transfers would create more muted tones to focus the eye on the subject

Gouache painting of enlarged image.  
white gel pens to create highlights.



# Tjalf Sparnaay

I admire the immense detail of Sparnaay's paintings and his careful, complex approach to painting simple subjects. He is able to use the paints to create different surfaces and textures.

'Coke crush'



'Nasty ketchup bottle'



He takes the everyday, mundane objects out of their daily context and places them in a plain, classical artistic composition.

This is commonly seen in traditional still life painting but contrasts the modern subjects that he paints

Sparnaay has painted many eggs throughout his career and they have become a significant part of his work. His vibrant colours and incredible detail turn a simple subject into a mouth watering image. This use of warm, vibrant tones give the egg a beauty that is ignored in daily life. The painting is also on a large scale which allowed Sparnaay to add an incredible level of detail. This gives the subject importance and value that is usually ignored.

Sparnaay is a Dutch artist born in 1954. He is known for his large scale, hyperrealistic paintings of food which he describes as 'Megarealism'.



Still life was popular in art during the 1600s and Sparnaay's work is reminiscent of this but focuses on modern 'trivial and everyday objects'.

He works on an extremely large scale, allowing him to focus on extreme details and explore lighting and dynamics to create a realistic image.

He is a self-taught artist and uses oils on large scale canvases.



'BME EGG' 80x80cm



Reference Image  
from photoshoot



I decided to paint one of my images, taking inspiration from Tjalf Spornooy's realistic style.

I zoomed in on three significant elements of the subject that I felt represented the whole subject.

Zooming in on these smaller details allowed me to work on a larger scale, focusing on every detail of the image.



# ZOOMING

IN:

Zooming in on the subject, exposes the intricate details of the everyday objects that would usually be ignored.

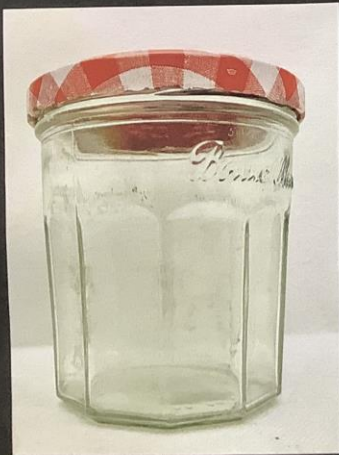
This is a concept I would like to explore further.



to  
type.  
want  
I felt  
st.  
details  
per scale,  
the image.

# Photoshoot

I enjoyed photographing the glass objects. I think the reflections created by the light will be interesting to paint. This will also challenge my use of light and shade to portray depth in the painting.



I angled the bag to emphasise the different shadows & highlights on the bag



I decided to do another photoshoot. As before, I photographed everyday objects placed in a simple but dramatic composition.

I had a focus on brand packaging, to take interesting images with details that I could paint.

I used a light box to remove any distractions from the background and create a simple, minimalist composition.

I also edited the images to enhance and brighten them to emphasise the vibrant colours.



The bright lighting and central position of the jam jar gives it an ironic importance.

The eye is drawn towards the jar, creating a sense of power to the basic, everyday item.



This is a selection  
of some of the  
most successful  
images from the  
photoshoot.



In this image  
I set up multiple objects to create  
a scene. Although this remains  
simple, a story can be  
inferred from the photograph.



I love the vibrant colour of these images.



In these photographs I experimented with the effects / highlights and shadows created by glass



I also edited the images to enhance the tones



This is also taking inspiration from Tjalf Sparnaay's composition. He removes the objects from their daily context, placing them in an

I brightened the background to minimise distraction from the subject in traditional still life painting.





The lighting in these effectively highlights the uneven surfaces



I love how the light reflected off of the foil in this image. The dramatic lighting and plain background give the subject importance

I feel that this conveys more of a story

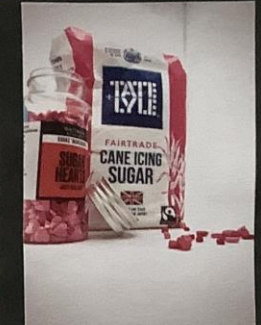


For this photo I positioned the objects as part of a scene

I like the composition of this image with the sprinkles surrounding it.



I held the camera at a low angle which skewed the image and made the objects appear larger. In these images I experimented with perspective.

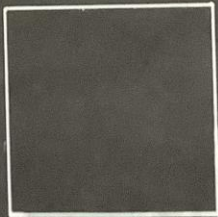
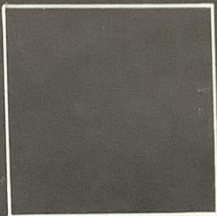
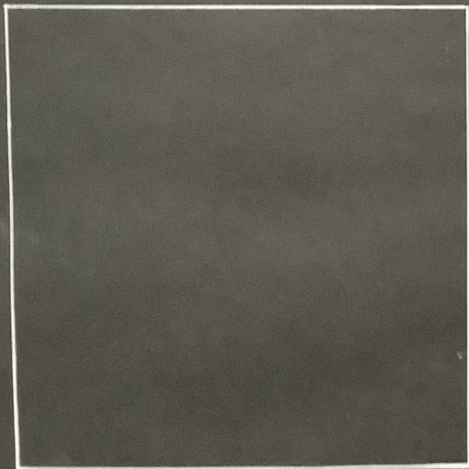


# FINAL PLAN

My plan for the exam is to paint idea 4.

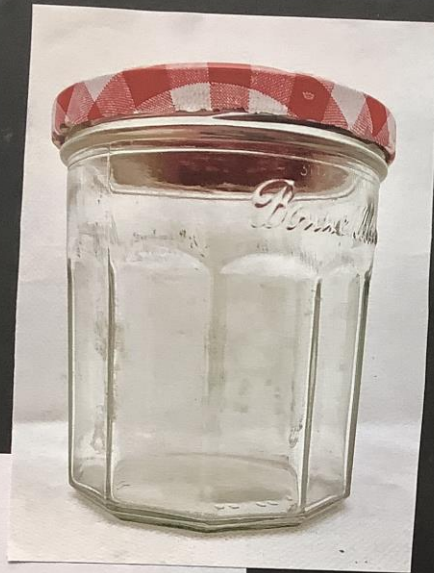
I am excited for the challenge of painting on a large scale. I have decided to paint on A1 but squared off.

If time allows during the exam I will pair this with 2 smaller paintings to the right. These will be zoomed in sections of the jar to highlight the 2 most important elements of the object.



my chosen  
media is  
gouache.

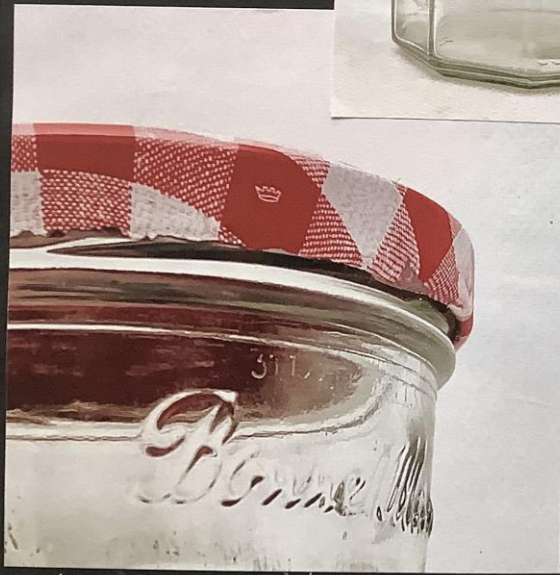
Zooming in on  
this image allowed  
me to work on  
a large scale  
but quickly



## Developing Ideas and technique

→ Working from my images, I used gouache to highlight the details of the objects in these studies

↖ I love the colours of this painting and the varying tones.





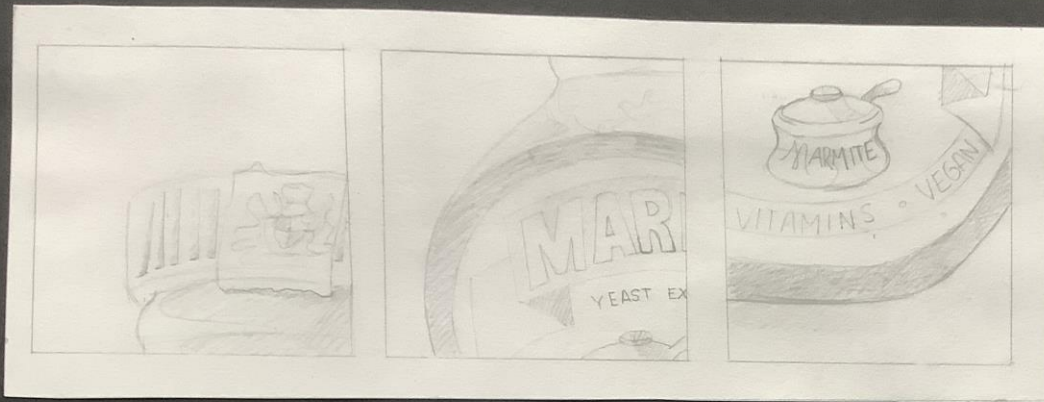
I feel like my painting captured the packaging details well but the glass bottle lacks depth.



I would like to combine these close up images as a collection to display the most important aspects of the object







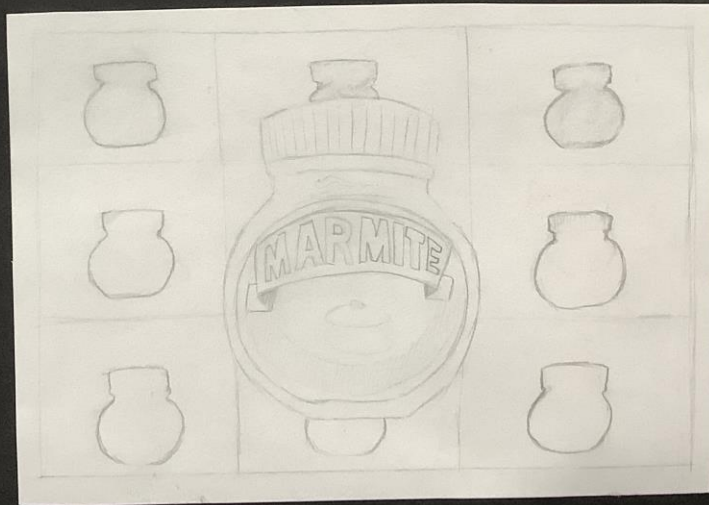
## ① Zooming In

For this outcome I would produce a series of 3 gouache paintings in which I zoom in on a marmite jar

I would paint in a realistic style using the natural colours of the image

- I enjoyed zooming in on objects throughout my project so have zoomed in on the details of the jar. This highlights the details that would usually be ignored

However, I have decided against this idea as I feel that one large scale image would be more striking.





3

for this idea I would paint a realistic gouache painting.

I would paint this on a large scale, magnifying the details of the everyday objects

when practicing this, I enjoyed using different tones to show the textures of the objects.

I have decided against this image as I would rather focus my time painting the details of one object.

I also prefer the central composition of my fourth idea.



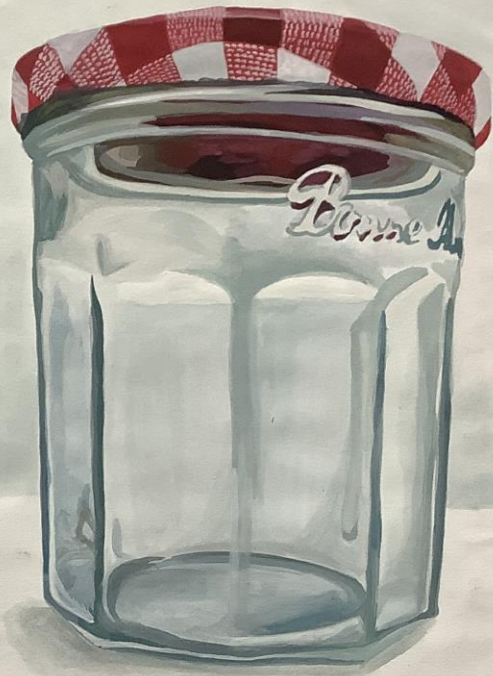


large scale to create a striking image and highlight the details that would usually be missed.

When practicing this painting I really enjoyed using techniques to create the glass appearance and would love to paint this on a large scale

---

This is the idea I have chosen to paint.



## The Jam Jar

4

For this idea I would paint a realistic gouache painting of a jam jar.

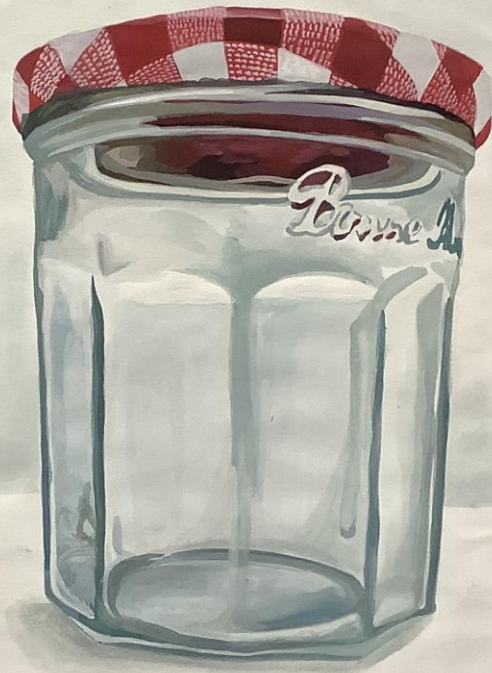
This is from my own reference image.

I would paint this on a large scale to create a striking image and highlight the details that would usually be missed.

When practicing this painting I really enjoyed using techniques to create the glass appearance and would love to paint this on a large scale

---

This is the idea I have chosen to paint.



# Outcomes

