



# BTEC

## Level 2

### Post-16

### qualifications

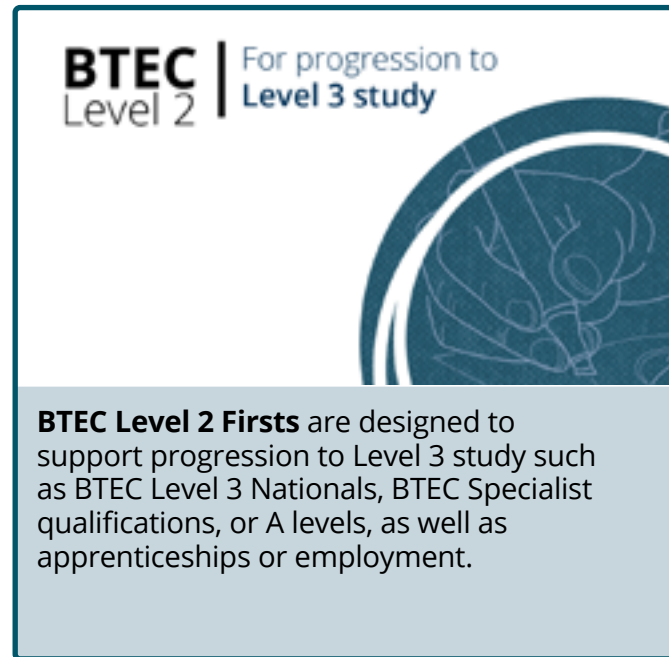
Our BTEC Level 2 post-16 suite of qualifications is the most complete and up-to-date Level 2 offer available, spanning a wide range of sectors. All have been developed in consultation with employers, teachers and professional bodies and reflect the latest standards and industry requirements.

We've put together a summary of Pearson BTEC's full Level 2 post-16 offer – see list opposite for more details.

# Designed to meet the needs of your learners

**BTECs** have become synonymous with success. Offering learners different routes to their chosen career, each one is designed to help them achieve their goals in a way that suits their learning style.

At **Level 2** we have two different qualification routes available both with the same rigorous development but each with their own focus:



**BTEC Level 2** | For progression to **Level 3 study**

**BTEC Level 2 Firsts** are designed to support progression to Level 3 study such as BTEC Level 3 Nationals, BTEC Specialist qualifications, or A levels, as well as apprenticeships or employment.



**BTEC Level 2** | For routes to **employment or an apprenticeship**

**BTEC Level 2 Technicals and BTEC Industry Skills** are practical qualifications designed to give your learners the specific industry skills and knowledge they will need to go straight into employment, an apprenticeship or to further technical study.

## BTEC support

Our BTEC Level 2 Post-16 qualifications include a range of materials and services designed to help you successfully deliver your BTEC course, including:

- **Teaching and learning materials** – available to download from the relevant qualification web pages
- **Expert advice** – from our team of Subject Advisors who are on hand to offer specialist help and support
- **myBTEC** – our free online BTEC planning tool developed to save you time and help you get your course up and running as quickly as possible
- **Training events** – designed to help you get the most out of teaching BTEC.

For full details of all support available visit the relevant qualification web page.

# Business



Suite	Qual. No.	Qualification	Last registration	Final certification	Status	Assessment	ESFA 16-19 Funding	ESFA Funding 19+	DfE Perf. Tables (Tech Cert)	Transition to new qualifications
Pearson BTEC Level 2 Firsts	603/5803/8	<a href="#">Award in Esports</a>	Available to learners		Current	Internally assessed	Yes	Yes	No	No
	603/5804/X	<a href="#">Certificate in Esports</a>	Available to learners		Current	Internally assessed	Yes	Yes	No	No
	603/5805/1	<a href="#">Diploma in Esports</a>	Available to learners		Current	Internally assessed	Yes	Yes	No	No
	600/6815/2	<a href="#">Certificate in Business</a>	Available to learners		Current	Internal and external assessment	Yes	Yes	No	n/a
	600/6816/4	<a href="#">Extended Certificate in Business</a>	Available to learners		Current		Yes	Yes	No	n/a
	601/0171/4	<a href="#">Diploma in Business</a>	Available to learners		Current		Yes	Yes	No	n/a

# Business continued

Suite	Qual. No.	Qualification	Last registration	Final certification	Status	Assessment	ESFA 16-19 Funding	ESFA Funding 19+	DfE Perf. Tables (Tech Cert)	Transition to new qualifications
Pearson BTEC Level 2 Technicals	603/0481/9	<a href="#">Certificate in Business Administration</a>	Available to learners		Current	Internal and external assessment	Yes	Yes	Yes	n/a
	603/0482/0	<a href="#">Certificate in Business Enterprise</a>	Available to learners		Current		Yes	Yes	Yes	n/a
	603/1900/8	<a href="#">Certificate in Marketing</a>	Available to learners		Current		Yes	Yes	Yes	n/a
BTEC Specialist and Professional	603/3840/4	<a href="#">Certificate for Retailers</a>	Available to learners		Current	Internally assessed	Yes	Yes	No	n/a
	603/4675/9	<a href="#">Certificate for Customer Service Practitioners</a>	Available to learners		Current		Yes	Yes	No	n/a
	603/4676/0	<a href="#">Diploma for Customer Service Practitioners</a>	Available to learners		Current		Yes	Yes	No	n/a

# Construction



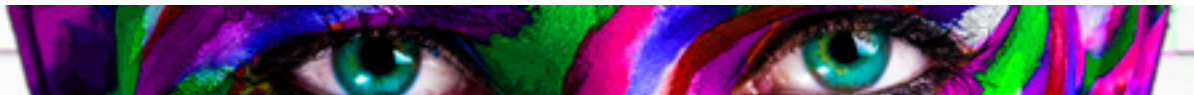
Suite	Qual. No.	Qualification	Last registration	Final certification	Status	Assessment	ESFA 16-19 Funding	ESFA Funding 19+	DfE Perf. Tables (Tech Cert)	Transition to new qualifications
Pearson BTEC Level 2 Firsts	600/7048/1	<u>Certificate in Construction and the Built Environment</u>	Available to learners		Current	Internal and external assessment	Yes	Yes	No	n/a
	601/0258/5	<u>Extended Certificate in Construction and the Built Environment</u>	Available to learners		Current	Internal and external assessment	Yes	Yes	No	n/a
	601/0259/7	<u>Diploma in Construction and the Built Environment</u>	Available to learners		Current	Internal and external assessment	Yes	Yes	No	n/a

# Creatives



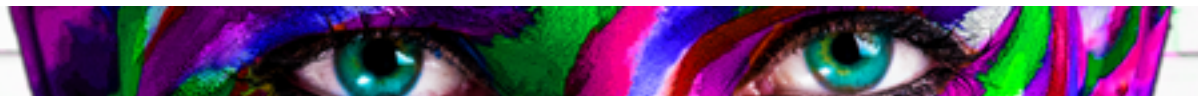
Suite	Qual. No.	Qualification	Last registration	Final certification	Status	Assessment	ESFA 16-19 Funding	ESFA Funding 19+	DfE Perf. Tables (Tech Cert)	Transition to new qualifications
Pearson BTEC Level 2 Firsts	600/7045/6	<a href="#"><u>Certificate in Creative Digital Media Production</u></a>	Available to learners		Current	Internal and external assessment	Yes	Yes	No	n/a
	601/0167/2	<a href="#"><u>Extended Certificate in Creative Digital Media Production</u></a>								
	601/0166/0	<a href="#"><u>Diploma in Creative Digital Media Production</u></a>								
	600/6869/3	<a href="#"><u>Certificate in Performing Arts</u></a>	Available to learners		Current	Internal and external assessment	Yes	Yes	No	n/a
	600/6870/X	<a href="#"><u>Extended Certificate in Performing Arts</u></a>								
	601/0168/4	<a href="#"><u>Diploma in Performing Arts</u></a>								
	601/0260/3	<a href="#"><u>Extended Certificate in Music</u></a>	Available to learners		Current	Internal and external assessment	Yes	Yes	No	n/a
601/0261/5	<a href="#"><u>Diploma in Music</u></a>									

# Creatives continued



Suite	Qual. No.	Qualification	Last registration	Final certification	Status	Assessment	ESFA 16-19 Funding	ESFA Funding 19+	DfE Perf. Tables (Tech Cert)	Transition to new qualifications
Pearson BTEC Level 2 Skills	603/5543/8	<u><a href="#">Level 2 Certificate in Art and Design Skills (180 GLH)</a></u>	Available to learners		Current	Internally assessed	Yes	Yes	No	n/a
	603/5544/X	<u><a href="#">Level 2 Extended Certificate in Art and Design Skills (240 GLH)</a></u>	Available to learners		Current	Internally assessed	Yes	Yes	No	n/a
	603/5547/5	<u><a href="#">Level 2 Diploma in Art and Design Skills (360 GLH)</a></u>	Available to learners		Current	Internally assessed	Yes	Yes	No	n/a
	603/5545/1	<u><a href="#">Level 2 Certificate in Creative Media Skills (180 GLH)</a></u>	Available to learners		Current	Internally assessed	Yes	Yes	No	n/a
	603/5546/3	<u><a href="#">Level 2 Extended Certificate in Creative Media Skills (240 GLH)</a></u>	Available to learners		Current	Internally assessed	Yes	Yes	No	n/a
	603/5548/7	<u><a href="#">Level 2 Diploma in Creative Media Skills (360 GLH)</a></u>	Available to learners		Current	Internally assessed	Yes	Yes	No	n/a
	603/5530/X	<u><a href="#">Award in Music Industry Skills</a></u>	Available to learners		Current	Internally assessed	Yes	Yes	No	n/a
	603/5532/3	<u><a href="#">Certificate in Music Industry Skills</a></u>	Available to learners		Current	Internally assessed	Yes	Yes	No	n/a
	603/5533/5	<u><a href="#">Extended Certificate in Music Industry Skills</a></u>	Available to learners		Current	Internally assessed	Yes	Yes	No	n/a
	603/2475/2	<u><a href="#">Diploma in Music Industry Skills</a></u>	Available to learners		Current	Internally assessed	Yes	Yes	No	n/a

# Creatives continued



Suite	Qual. No.	Qualification	Last registration	Final certification	Status	Assessment	ESFA 16-19 Funding	ESFA Funding 19+	DfE Perf. Tables (Tech Cert)	Transition to new qualifications
Pearson BTEC Level 2 Industry Skills	603/5538/4	<a href="#"><u>Level 2 Award in Performing and Production Arts Industry Skills</u></a>	Available to learners		Current	Internally assessed	Yes	Yes	No	n/a
	603/5535/9	<a href="#"><u>Level 2 Certificate in Performing and Production Arts Industry Skills</u></a>	Available to learners		Current	Internally assessed	Yes	Yes	No	n/a
	603/5537/2	<a href="#"><u>Level 2 Extended Certificate in Performing and Production Arts Industry Skills</u></a>	Available to learners		Current	Internally assessed	Yes	Yes	No	n/a
	603/1901/X	<a href="#"><u>Diploma in Performing and Production Arts Industry Skills</u></a>	Available to learners		Current	Internally assessed	Yes	Yes	No	n/a



# Early years



Suite	Qual. No.	Qualification	Last registration	Final certification	Status	Assessment	ESFA 16-19 Funding	ESFA Funding 19+	DfE Perf. Tables (Tech Cert)	Transition to new qualifications
Pearson BTEC Level 2 Technicals	603/0509/5	<u>Diploma in Children's Play, Learning and Development (Early Years Practitioner)</u>	Available to learners		Current	Internal and external assessment	Yes	Yes	Yes	n/a

# Engineering



Suite	Qual. No.	Qualification	Last registration	Final certification	Status	Assessment	ESFA 16-19 Funding	ESFA Funding 19+	DfE Perf. Tables (Tech Cert)	Transition to new qualifications
Pearson BTEC Level 2 Firsts	600/4342/8	<u>Extended Certificate in Vehicle Technology</u>	Available to learners		Current	Internal and external assessment	Yes	Yes	No	n/a
	600/4341/6	<u>Diploma in Vehicle Technology</u>					Yes	Yes	No	n/a
	600/6628/3	<u>Certificate in Engineering</u>					Yes	Yes	No	n/a
	600/6630/1	<u>Extended Certificate in Engineering</u>					Yes	Yes	No	n/a
	601/0545/8	<u>Diploma in Engineering</u>					Yes	Yes	No	n/a
BTEC Specialist and Professional	603/6351/4	<u>BTEC Level 2 Certificate in Engineering Operations (Knowledge)</u>	Available to learners		Current	Internal assessment	Yes	Yes	No	n/a
	603/4722/3	<u>BTEC Level 2 Diploma in Engineering Operations (Knowledge)</u>	Available to learners		Current	Internal assessment	Yes	Yes	No	n/a

# Health and Social Care



Suite	Qual. No.	Qualification	Last registration	Final certification	Status	Assessment	ESFA 16-19 Funding	ESFA Funding 19+	DfE Perf. Tables (Tech Cert)	Transition to new qualifications
Pearson BTEC Level 2 Firsts	600/6311/7	<u>Certificate in Health and Social Care</u>	Available to learners		Current	Internal and external assessment	Yes	Yes	No	n/a
	600/6312/9	<u>Extended Certificate in Health and Social Care</u>	Available to learners		Current	Internal and external assessment	Yes	Yes	No	n/a
	601/0170/2	<u>Diploma in Health and Social Care</u>	Available to learners		Current	Internal and external assessment	Yes	Yes	No	n/a



Suite	Qual. No.	Qualification	Last registration	Final certification	Status	Assessment	ESFA 16-19 Funding	ESFA Funding 19+	DfE Perf. Tables (Tech Cert)	Transition to new qualifications
Pearson BTEC Level 2 Firsts	600/6071/2	<a href="#">Certificate in Information and Creative Technology</a>	Available to learners		Current	Internal and external assessment	Yes	Yes	No	n/a
	600/6072/4	<a href="#">Extended Certificate in Information and Creative Technology</a>	Available to learners		Current	Internal and external assessment	Yes	Yes	No	n/a
	601/0169/6	<a href="#">Diploma in Information and Creative Technology</a>	Available to learners		Current	Internal and external assessment	Yes	Yes	No	n/a
Pearson BTEC Level 2 Technicals	603/0510/1	<a href="#">Certificate in IT Support</a>	Available to learners		Current	Internal and external assessment	Yes	Yes	Yes	n/a
	603/0878/3	<a href="#">Diploma in Digital Technology</a>	Available to learners		Current	Internal and external assessment	Yes	Yes	Yes	n/a

# Land-based

Suite	Qual. No.	Qualification	Last registration	Final certification	Status	Assessment	ESFA 16-19 Funding	ESFA Funding 19+	DfE Perf. Tables (Tech Cert)	Transition to new qualifications
Pearson BTEC Level 2 Technicals	603/1907/0	<a href="#"><u>Diploma in Agriculture</u></a>	Available to learners		Current	Internally assessed	Yes	Yes	No	n/a
	603/0420/0	<a href="#"><u>Diploma in Animal Care</u></a>	Available to learners		Current	Internal and external assessment	Yes	Yes	Yes	n/a
	603/2657/8	<a href="#"><u>Diploma in Blacksmithing</u></a>	Available to learners		Current	Internally assessed	Yes	Yes	No	n/a
	603/1906/9	<a href="#"><u>Diploma in Countryside Studies</u></a>	Available to learners		Current	Internally assessed	Yes	Yes	No	n/a
	603/1211/7	<a href="#"><u>Diploma in Equine Studies</u></a>	Available to learners		Current	Internal and external assessment	Yes	Yes	Yes	n/a

# Land-based continued

Suite	Qual. No.	Qualification	Last registration	Final certification	Status	Assessment	ESFA 16-19 Funding	ESFA Funding 19+	DfE Perf. Tables (Tech Cert)	Transition to new qualifications
Pearson BTEC Level 2 Technicals	603/2719/4	<u>Diploma in Forestry and Arboriculture</u>	Available to learners		Current	Internally assessed	Yes	Yes	No	n/a
	603/1908/2	<u>Diploma in Horticulture</u>	Available to learners		Current	Internally assessed	Yes	Yes	No	n/a

# Public Services



Suite	Qual. No.	Qualification	Last registration	Final certification	Status	Assessment	ESFA 16-19 Funding	ESFA Funding 19+	DfE Perf. Tables (Tech Cert)	Transition to new qualifications
Pearson BTEC Level 2 Firsts	601/3258/9	<u>Certificate in Public Services</u>	Available to learners		Current	Internal and external assessment	Yes	Yes	No	n/a
	601/3259/0	<u>Extended Certificate in Public Services</u>								
	603/6006/9	BTEC Level 2 Certificate in Preparation for Public Services	Available to learners		Current	Internally assessed	Yes	Yes	No	n/a
	603/6007/0	BTEC Level 2 Diploma in Preparation for Public Services	Available to learners		Current					

# Science

Suite	Qual. No.	Qualification	Last registration	Final certification	Status	Assessment	ESFA 16-19 Funding	ESFA Funding 19+	DfE Perf. Tables (Tech Cert)	Transition to new qualifications
Pearson BTEC Level 2 Firsts	600/6318/X	<u>Extended Certificate in Applied Science</u>	Available to learners		Current	Internal and external assessment	Yes	Yes	No	n/a
	601/4531/6	<u>Diploma in Applied Science</u>	Available to learners		Current	Internal and external assessment	Yes	Yes	No	n/a



# Sport



Suite	Qual. No.	Qualification	Last registration	Final certification	Status	Assessment	ESFA 16-19 Funding	ESFA Funding 19+	DfE Perf. Tables (Tech Cert)
Pearson BTEC Level 2 Industry Skills	603/6137/2	<a href="#">Diploma in Sports Industry Skills (Recreation Assistant)</a>	available to learners		Current	Internally assessed	Yes	Yes	No
	603/6134/7	<a href="#">Diploma in Sports Industry Skills (Leading Children's Sports Activities)</a>					Yes	Yes	No
	603/6135/9	<a href="#">Diploma in Sports Industry Skills (Instructing exercise in a Gym Environment)</a>					Yes	Yes	No
	603 6136/0	<a href="#">Diploma in Sports Industry Skills (Instructing Circuit training)</a>					Yes	Yes	No
Pearson BTEC Level 2 Firsts	600/6819/X	<a href="#">Certificate in Sport</a>	Available to learners		Current	Internal and external assessment	Yes	Yes	No
	600/6820/6	<a href="#">Extended Certificate in Sport</a>							
	601/0232/9	<a href="#">Diploma in Sport</a>							

# Travel and Tourism



Suite	Qual. No.	Qualification	Last registration	Final certification	Status	Assessment	ESFA 16-19 Funding	ESFA Funding 19+	DfE Perf. Tables (Tech Cert)	Transition to new qualifications
Pearson BTEC Level 2 Firsts	600/7046/8	<u>Certificate in Travel and Tourism</u>	Available to Learners		Current	Internal and external assessment	Yes	Yes	No	n/a
	601/0233/0	<u>Extended Certificate in Travel and Tourism</u>	Available to Learners		Current	Internal and external assessment	Yes	Yes	No	n/a
	601/0234/2	<u>Diploma in Travel and Tourism</u>	Available to Learners		Current	Internal and external assessment	Yes	Yes	No	n/a