A large circular graphic with a thick black border. The interior is filled with colorful, wavy lines in shades of red, yellow, green, and blue, resembling a fingerprint. A solid brown segment is located in the upper right quadrant of the circle. A grey rectangular box is overlaid on the center of the circle, containing white text.

Teaching Applied  
Law at Level 3?  
Choose BTEC Nationals



## Welcome to your Guide to BTEC Level 3 Nationals in:

### ⦿ **Applied Law**

Your guide includes everything you need to know about BTEC Level 3 Nationals Applied Law qualifications, why universities and employers are so excited about BTEC qualifications, and why **around 1 in 4 students entering university in the UK do so with a BTEC.\***

\*Source: UCAS Progression Pathways – Jan 2016

*The skills to succeed – the confidence to progress*

## Contents

### Introducing BTEC Level 3 Nationals

Why choose BTEC Nationals? .....	4–5
The route to success .....	6–7

### Explore your BTEC Level 3 Nationals

Your qualifications explained .....	8–9
Applied Law .....	10–11

### Teaching BTEC Level 3 Nationals

Course materials .....	12–13
Published resources .....	14–15
myBTEC .....	16
Training .....	17
Delivering BTEC .....	18–19

### Assessing BTEC Level 3 Nationals

Assessment .....	20
Grading .....	21

### BTEC for Levels 1 and 2

BTEC Level 1 Introductory .....	22
BTEC Level 2 Technicals .....	23

## Why choose BTEC Nationals?

Young people taking their first steps towards a new career need the right blend of **technical and academic skills** in order to become the highly skilled, work-ready individuals employers and universities look for.

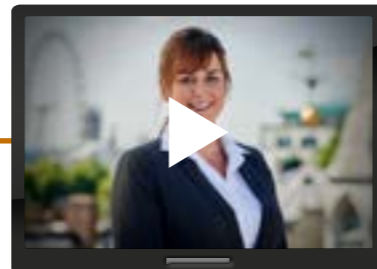
BTEC Level 3 Nationals are vocational qualifications designed to help your learners succeed. They have been developed in collaboration with over 5,000 universities, employers and professional bodies with **employability at the heart**, so your learners can develop the skills and confidence they will need to step into their future.

### Why universities choose BTEC



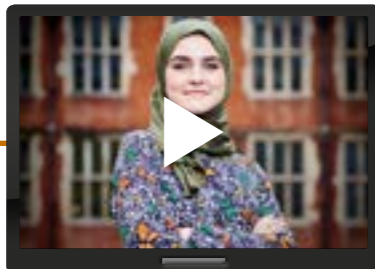
[quals.pearson.com/BTECprogress17Guide](https://quals.pearson.com/BTECprogress17Guide)

### Why employers choose BTEC



[quals.pearson.com/BTECprogress17Guide](https://quals.pearson.com/BTECprogress17Guide)

### Why students choose BTEC



[quals.pearson.com/BTECprogress17Guide](https://quals.pearson.com/BTECprogress17Guide)

## What's new

Your new BTEC Level 3 Nationals qualifications take a unit-by-unit approach and provide you learners with practical, work-related courses. They offer:

### Combination of assessment styles

Learners can demonstrate their knowledge, skills and understanding through work-related contexts. (see page 20 for details).

### Large foundation of mandatory units

Universities and employers have evidence of a consistent level of core knowledge and skills.

### Comprehensive support

We've listened to feedback and put together our most comprehensive support package yet. (see pages 12–19 for details).

*The skills to succeed – the confidence to progress*



## The route to success

After 30 years of proven success, more and more employers and Higher Education institutions across the globe are choosing BTEC-qualified candidates for their **practical knowledge** and **employability skills**.

More than a million learners choose BTEC each year.

BTEC Level 3 Nationals in Applied Law offer your learners:

- ① **Work-related learning**, giving learners an edge and opening the door to higher education or employment in legal or business sectors.
- ② **Clear progression routes** when taken alongside other courses. Learners can progress to higher education courses such as a BA in Law (LLB), an apprenticeship or training routes in the legal sector.
- ③ **Transferable skills development** such as case study research, teamwork and client communication.
- ④ **Coverage of core legal studies**. Mandatory units include civil law, criminal law and application of the law. The optional units available give learners the opportunity to explore contract law, tort, consumer law and family law.

*The skills to succeed – the confidence to progress*

“BTEC courses give you real, hands-on experience. It’s what I call ‘learning by doing’ and gives you the skills today’s employers are looking for.”

*Peter Jones CBE,  
Entrepreneur*



Find out why **Peter Jones** and our other ambassadors choose **BTEC** at [quals.pearson.com/BTECprogress17Guide](https://quals.pearson.com/BTECprogress17Guide).

See some great BTEC success stories and meet our **BTEC Business and Enterprise Student of the Year 2017** at: [quals.pearson.com/BTECawards17guide](https://quals.pearson.com/BTECawards17guide)



## Did you know...

**4 out of 5 BTEC students go on to receive a First or Second class degree**

(The outcomes associated with the BTEC route of degree level acquisition, London Economics 2013)

**37% of businesses prefer recruits to hold a mix of academic and vocational qualifications or value them equally**

(Inspiring Growth: Pearson/Skills CBI Skills survey 2015)

## Your BTEC Nationals Applied Law qualifications explained

BTEC Level 3 Nationals Applied Law courses offer qualifications that can be studied alongside other level 3 qualifications such as A levels or other BTEC Nationals as part of a larger programme of study.

- ⦿ They are designed for Post-16 Level 3 learners wishing to go on to further or higher level study of the sector or directly to employment.
- ⦿ All sizes attract **UCAS points** and are widely recognised by universities and employers.



### Find out more

The following pages provide you with an overview of each course. For full details or to download your specifications please go to [quals.pearson.com/BTECNatsLawGuide](https://quals.pearson.com/BTECNatsLawGuide)

Your BTEC Level 3 Applied Law qualifications are **Applied General** style.

### Applied General qualifications

For learners progressing to their career through higher level study, although they could go directly into employment at the end of the course. They will have the opportunity to:

- ⦿ **choose between different qualification sizes** so they have the option to study full or part-time or take a BTEC alongside other level 3 qualifications such as A levels.



*The skills to succeed – the confidence to progress*



## Applied Law

BTEC Nationals in Applied Law are unique qualifications in the legal sector, providing an excellent introduction to law and giving learners an edge when progressing to higher education and employment.

A range of universities have expressed their support for BTEC Nationals in Applied Law as a route for progression into higher education.

For example:

- ⊙ Edge Hill University
- ⊙ Leeds Beckett University
- ⊙ University College Birmingham
- ⊙ University of Huddersfield
- ⊙ University of South Wales
- ⊙ University of the West of England

### Find out more

For **Teaching support** see page 12

For **Assessment** see page 20

Download your **specification** at:

[quals.pearson.com/BTECNatsLawGuide](https://quals.pearson.com/BTECNatsLawGuide)

Included in performance measures in England – see website for full details

## Applied General

### Certificate 180 GLH

Same size as 0.5 A level

Applied General

**Total units: 2**  
2 Mandatory Units

**Purpose:** this qualification is for post-16 learners who want to continue their education through applied learning and to progress to:

- ⊙ Higher education (for example, BA in Law (LLB) or BA in Business and Law)
- ⊙ Employment

It aims to give a basic introduction to study of the legal sector. In addition to legal content, the qualification will enable learners to develop the transferable and higher-order skills that are highly regarded by higher education providers and employers.

### Extended Certificate 360 GLH

Same size as 1 A level

Applied General

**Total units: 4**  
3 Mandatory Units  
PLUS 1 Optional Unit\*

**Purpose:** this qualification is for post-16 learners who want to continue their education through applied learning and to progress to:

- ⊙ Higher education (for example, BA in Law (LLB) or BA in Business and Law)
- ⊙ Employment
- ⊙ An Advanced Apprenticeship (eg. Legal Services)

It can be taken as part of a programme of study that includes other appropriate BTEC Nationals or A Levels and provides the basis of an excellent route for learners to pursue a career in the legal sector.

\*please see specification for details of all Optional Units available.

Information correct at time of publication – please see specification for latest information.



## Course materials

BTEC Level 3 Nationals in Applied Law have a comprehensive range of FREE course materials available to help with **planning and teaching**, as well as **assessing and tracking** progress of your learners.

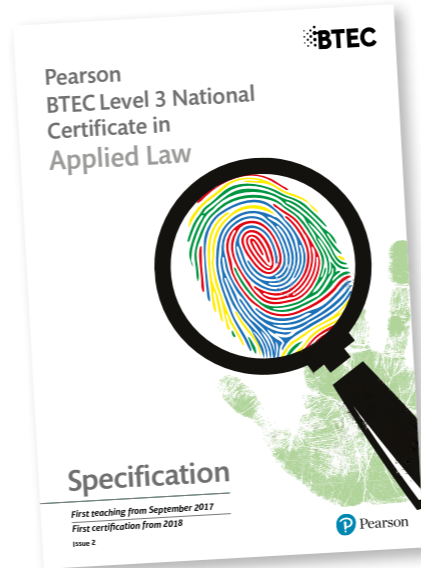
### Find out more

For full details of all the support available please see website:



#### Applied Law

[quals.pearson.com/BTECNatsLawGuide](https://quals.pearson.com/BTECNatsLawGuide)



*The skills to succeed – the confidence to progress*

### Plan

We've a bank of support materials designed to help you choose and plan the right course for your learners including:

- Specifications
- Sample Assessment Materials
- Delivery plans
- myBTEC planning tools
- Authorised Assignment Briefs
- Getting Ready to Teach free events

### Teach

You'll also find a wide range of teaching and learning materials to help you deliver your course such as:

- Delivery guides
- Schemes of work
- Training events
- Published resources

### Assess and Track

There's also a selection of resources designed to help you prepare for assessment and track learner progress:

- Sample Assessment Materials
- Sample Marked Learner Work
- Authorised Assignment Briefs
- Quality Assurance guides
- myBTEC progress tracking

### Find out more

- See page 17 for full details about free training events
- Download your specifications at: [quals.pearson.com/BTECNatsLawGuide](https://quals.pearson.com/BTECNatsLawGuide)

## Published resources (paid for)

We know it can be time-consuming and tricky to create lessons that work for each of your students, stretching the more able and supporting lower ability. That's why our resources are built around established pedagogical principles, to give your students targeted support and help them improve their understanding and progress.

Features throughout the Student Book help learners to build knowledge, understand how to excel in assessment, reflect and evaluate learning, and link their learning to real-life workplace scenarios.

The book covers units 1–7: all of the mandatory and optional units for both the Certificate and Extended Certificate qualifications.




## Student book with ActiveBook

- ⦿ Help learners develop and apply principles and practical knowledge
- ⦿ Include preparation for assessment
- ⦿ Encourage self-evaluation
- ⦿ Accompanied by an ActiveBook (online version of the Student Books)

You do not need to purchase any resources in order to deliver these qualifications.

*Resources built around learning principles you can trust*



### Getting started

In small groups, list the names of relationships that can exist between two adults. Discuss what happens when someone starts a new relationship. For example, will their money and possessions be affected? Think about ways in which the law can protect someone if a relationship comes to an end.

## A Explore the legal rules governing the formation of marriages, civil partnerships and cohabitation

The legal regulations governing marriages, civil partnerships and cohabitation vary in different countries. Here you will explore the definitions of these relationships and how the law of England and Wales applies to them.

### Marriage and civil partnership

The types of legally recognised adult relationships in which individuals have the strongest legal rights are marriage and civil partnership.

#### Definition of marriage

**Marriage** is the legally recognised union of two people as partners in a personal relationship.

**Coercion** - when you are being forced into doing something.

**Fraud** - unlawful or criminal behaviour by which you intend to deceive others, often for personal benefit.

**Guardian** - someone who has been named in a will as the person responsible for the will-maker's children if they are orphaned before reaching the age of 18.

**Consanguinity** - relationship between the intended marriage partners as a result of family ties through a blood relative.

**Affinity** - relationships developed as a result of marriage of one parent to a parent of the other party of the proposed marriage.

**Marriage** is the legally recognised union of two people as partners in a personal relationship. Until 2013, marriage was specifically a union between a man and a woman. However, the Marriage (Same Sex Couples) Act 2013 made marriage legal for same-sex couples in England and Wales.

#### The right to marry

The right to marry is a human right, as stated in the European Convention on Human Rights (ECHR), Article 12: 'Men and women of marriageable age have the right to marry and to found a family, according to the national laws governing the exercise of this right.' This is also part of English law under the Human Rights Act 1998.

#### Formation of a valid marriage

Marriage can only take place if:

- ▶ both parties have the legal capacity to get married
- ▶ the correct procedure is followed.

Getting married is a voluntary activity. There are safeguards in the law to help prevent marriage taking place through **coercion** or **fraud**.

#### Who you can marry

There are various rules governing marriage. These relate to, for example, age, gender, relationship to the other person and a person's marital status at the time of marriage.

- ▶ **Age restrictions** - both of the people who wish to marry must be over the age of 16 and have the mental capacity to consent to marry. If either of the two people is under the age of 18, their consent must be obtained from that person's parents or **guardians**. If permission is refused, in England and Wales you can apply to the Family Court for permission to marry. The law in Scotland has always been different, and couples wishing to marry used to flee to Gretna Green on the Scottish border.
- ▶ **Prohibited degrees of relationship** - you cannot marry a close relative or someone within the 'prohibited degrees of relationship'. These are sometimes referred to as rules of **consanguinity** and **affinity**. Consanguinity means a relationship between

162 Aspects of Family Law

**Find out more**

**Download sample units and order evaluation copies at [www.pearsonfe.co.uk/BTECNats16and17Guide](http://www.pearsonfe.co.uk/BTECNats16and17Guide)**







## MyBTEC

We know that as a teacher workload can be an issue, that's why to help you save time we have designed myBTEC, a unique free service that aims to reduce your admin workload.

### What myBTEC can do for you:

- ⦿ **Saves you time** – for example when Internally Verifying an assignment brief, at least 50% of the questions are answered for you
- ⦿ **Reduces your workload** – for example your assessment plan is produced automatically from your assignment briefs in myBTEC
- ⦿ **Automatic grade tracking calculations**, so you know your students are on track
- ⦿ **Easily export and download all documents**, information and results
- ⦿ **Give you the complete visibility of all courses**, assessment, internal verification and results at your centre, so you can check progress at anytime.

Simply login at [mybtec.pearson.com](http://mybtec.pearson.com) with your Edexcel online details.

**Find out more**  
Discover myBTEC at  
[quals.pearson.com/myBTECIntroGuide](http://quals.pearson.com/myBTECIntroGuide)

*The skills to succeed – the confidence to progress*

## Training

We offer a range of events to help you in every aspect of planning, teaching and assessing your BTEC courses.

To make it as easy as possible for you to benefit from our training, many of our **face-to-face** events are available as **online sessions**, and you can request any of our events to be delivered as paid-for events in your centre.

Our programme of events:

- ⦿ make it easy for you to access BTEC training **how, when and where** you need it.
- ⦿ offer **qualification-based** and **role-based** courses so you can choose which event is right for you.
- ⦿ are **delivered by experts** passionate about training.
- ⦿ provide opportunities to **share ideas and best practice**.

What's more, our flexible range of high quality training events not only support your delivery of BTEC courses, but also help towards your **continued professional development**.

**Find out more**  
Book onto one of our events at [quals.pearson.com/BTECNatsTraining](http://quals.pearson.com/BTECNatsTraining)





## Admin support

### New to BTEC?

If you're thinking about teaching BTEC Nationals and want to know more about what's involved and the support we can provide see our step-by-step guides at [quals.pearson.com/stepbystepBTEC](https://quals.pearson.com/stepbystepBTEC).

We've included guidance on:

- How to get started
- Building your BTEC team
- Quality assurance
- Internals assessment
- External assessment

### Already teaching BTEC?

Remember you can find detailed information about key BTEC processes, forms and guidance materials [quals.pearson.com/BTECsupport](https://quals.pearson.com/BTECsupport).

You'll also find all of the essential tools and forms on each of our dedicated qualifications pages, alongside your specifications and any additional resources specific to your BTEC.

*The skills to succeed – the confidence to progress*

## Specialist help and advice

You also have access to specialist support and advice.

We will be happy to help with any questions you may have about your BTEC Level 3 Applied Law qualifications.



Ask the expert

✉ [teachinglaw@pearson.com](mailto:teachinglaw@pearson.com)

Find out More

For full details visit [quals.pearson.com/BTECNatsLawGuide](https://quals.pearson.com/BTECNatsLawGuide)

## Assessment and Grading

### Types of assessment

Your BTEC Level 3 Nationals Applied Law qualifications take a unit-by-unit approach and offer a combination of assessment styles.

This gives your learners the opportunity to showcase their skills and apply their knowledge in an appropriate, work-related context, and provides evidence of what they can do when they apply to enter higher education or employment.

Assignments (internally assessed)	Tasks (externally assessed)	Written Exams (externally assessed)
<p>Set and marked by: Centre Verified by: Pearson</p> <p><b>Assignments</b> are practical tasks set in work-related scenarios that can be tailored to local industry needs for your learners. Learners demonstrate how they apply knowledge and skills to complete a practical project over a period of time, working individually or in groups.</p>	<p>Set and marked by: Pearson</p> <p><b>Tasks</b> are practical work-related scenarios completed in realistic, time-based situations. They are completed in controlled conditions and some tasks have pre-released information. Learners demonstrate how to apply learning to common workplace or HE scenarios. Tasks provide evidence of a consistent standard of assessment for all BTEC learners.</p>	<p>Set and marked by: Pearson</p> <p>For written exams, learners draw on essential information to create written answers to practical questions in exam conditions. Learners demonstrate they can apply appropriate knowledge to a work-related challenge in timed conditions.</p>

### Grading

A learner's final qualification grade reflects their achievements across units in their BTEC Nationals course.

Both internally and externally assessed units are individually graded, and each final unit grade is allocated points.

- Internally assessed units are marked and graded in the Centre (school, college or training provider) and subject to external verification by Pearson.
- Externally assessed units are marked and graded by Pearson.
- Units are graded Pass, Merit or Distinction, with external units also having a N grade in most Level 3 sectors. Total points scored across all units are used to calculate the final qualification grade.

Achievement of a Certificate with a D grade:

	GLH	Type (Int/Ext)	Grade	Unit points
Unit 1	90	Int	Distinction	24
Unit 2	90	Ext	Merit	22
<b>Totals</b>	<b>180</b>		<b>D</b>	<b>46</b>

#### Find out more

For full details see Section 9 of your specification

**Download your specification at**  
[quals.pearson.com/BTECNatsLawGuide](https://quals.pearson.com/BTECNatsLawGuide)

We've also developed a range of new BTEC qualifications for Level 1 and Level 2 learners.



## For Level 1 post-16 Learners

### BTEC Level 1 Introductory qualifications

Graded, unit-based qualifications designed to develop transferable and sector skills so your **post-16 learners** can progress to further study, apprenticeships or training. BTEC Level 1 Introductory qualifications include:

**Business**

**Vocational Studies**

#### Find out more

Download your specifications at:  
[quals.pearson.com/BTECL1IntroGuide](https://quals.pearson.com/BTECL1IntroGuide)



## For Level 2 post-16 learners

### BTEC Level 2 Technicals

Designed to give **post-16 learners** real hands-on practical experience to master the skills they will need to succeed in their career or higher level study. Qualifications include:

**Business Enterprise**

**Business Administration**

#### Find out more


Download your specifications and view all our BTEC Level 2 Technicals at:  
[quals.pearson.com/BTECL2TechnicalsGuide](https://quals.pearson.com/BTECL2TechnicalsGuide)

## Your next Steps

1. Download your specifications, sample assessment materials and other FREE resources at:  
[quals.pearson.com/BTECNatsLawGuide](https://quals.pearson.com/BTECNatsLawGuide)
2. Order your paid-for resources at:  
[www.pearsonfe.co.uk/BTECNats16and17Guide](http://www.pearsonfe.co.uk/BTECNats16and17Guide)

## Stay in touch

Sign up for updates at  
[quals.pearson.com/BTECNats16UpdateGuide](https://quals.pearson.com/BTECNats16UpdateGuide)  
and we'll keep you up-to-date with the latest news.

-  Follow us on Twitter  
@teachBTEC  
#ichooseBTEC

## Help and advice

For help and advice about your new qualifications and free resources contact our Subject Advisor for Law:

-  [teachinglaw@pearson.com](mailto:teachinglaw@pearson.com)



The  
Royal  
Courts  
of  
Justice