

Understanding our vocational qualification fees:

BTEC Firsts, Technicals, Tech Awards, Nationals and Higher Nationals

1 August 2023 – 31 July 2024

Welcome to your guide to
Pearson Vocational Qualification fees.

In this document, you'll find full information on our Pearson BTEC Vocational Qualification fees for UK centres for the academic year 2023/24, as well as a reminder of the full range of support that these fees cover over the life of your qualification.

As always, Pearson is dedicated to ensuring that you have the best possible experience by providing teaching and learning resources, technologies, future-facing vocational qualifications and assessments to help all learners to realise their potential.

Here to help

If you need any help or advice about any of our qualifications you can contact us directly via our **customer portal**



Contents

➔ Overview of our fees	4
➔ Registrations, top-ups and refunds	6
➔ BTEC registration fees, timelines and refunds	6
➔ New fees for 2023/24	7
➔ Top-up fees and drop-down refunds for 2023/24	8
➔ BTEC Level 4 and Level 5 Higher Nationals Fees	10
➔ Assessment fees	12
➔ BTEC Level 1/Level 2 Tech Awards (from 2022): Internal and External Assessment Fees	12
➔ BTEC Level 1/Level 2 Firsts: External Assessment Fees	14
➔ BTEC Level 2 Technicals: External Assessment Fees	16
➔ BTEC Level 3 Nationals: External Assessment Fees	18
➔ FAQs and centre fees	20

Overview of our fees

What do registration fees cover?

BTEC registration fees that are paid at the beginning of the course cover more than just the assessment. The fees enable us to provide the expertise and support you need to access whilst teaching the course, as well as the Quality Assurance processes for internal assessment, one attempt at each external assessment, results and our supporting services.

Development of our qualifications



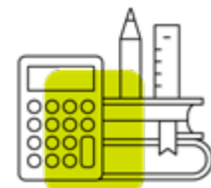
A proportion of each qualification fee contributes to the investment made in the research and development of the specifications and sample assessment materials, as well as ongoing management and improvements over the life of the qualification.

Planning and getting ready to teach the course



Planning and getting started guides, training, and events to support ongoing departmental CPD.

Support for teaching and learning



Teaching resources (e.g. schemes of work, delivery guides), network events, guidance for Quality Management and Quality Assurance, internal assessment, Exams Officer and Subject Expert helplines, plus information for exams officers (including regular newsletters and bulletins).

Quality Assurance, External Assessment and results



Holistic Review, Standards Verification, Authorised Assignment Briefs, Pearson Set Assignments, Moderation, Past papers, mark schemes, examiners reports, exemplars and sample marked learner work, live examinations, marking, standardisation, results (including our Access to Scripts and ResultsPlus services) and Exams Officer helpline.

All the above are included as part of the registration fee. We also provide the option of further training events that can be purchased at an additional cost.

What type of costs do we have?

We incur different types of costs when providing these services, which affects the amount that we can pass back to schools and colleges.

Fixed costs

Incurred every year regardless of assessment arrangements



Like a school or college, we have a high proportion of costs that are fixed. These include:

- experienced teams who develop our qualifications and assessments – including writing papers, answering your queries and ongoing improvements to specifications and supporting materials to help teachers deliver the courses
- teams that answer queries from teachers and exams officers, and keep candidate data and records on our systems up to date
- technology systems
- offices/buildings, including our specially designed processing centre.

Variable costs

These vary according to the assessment arrangements



Some of our costs are variable, which means we can change these if the assessment process changes.

These include:

- training and standardisation of our Quality Assurance teams, including Standards Verifiers, Moderators and Examiners
- printing, distributing and processing exam papers,
- marking exam papers.



© Gettyimages/AJ Watt/Moment



© Gettyimages/triloks/E+

BTEC registration fees, timelines and refunds

The BTEC registration fee is a once-only payment. The programme for which the learner registers and the type of registration determine the fee due. The fee for each qualification is available through our Vocational Qualifications Fee Finder on our [website](#).

The deadline for registration is 1 November each academic year. Any registration after this date will incur late registration fees as outlined below.

Late registration fees

For programmes following the academic year cycle, late registration fees will be charged according to the dates below.

Registrations received between 2 November 2023 and 23 December 2023 will be charged at 1.05 x fee (BTEC Higher Nationals and BTEC Foundation Diploma in Art, Design and Media Practice will be charged from 16 November 2023).

Registrations received between 24 December 2023 and 31 January 2024 will be charged at 1.1 x fee.

Registrations received on or after 1 February 2024 will be charged at 1.25 x fee.

Please refer to the BTEC section of the [Information Manual](#) for further information.

For programmes that do not follow the academic year (i.e. programmes where learners have enrolled between November and August), or for any programmes of less than one academic year in length, late registration fees will be charged six weeks after enrolment at 1.25 x fee for all qualifications (with the exception of BTEC Higher Nationals, for which late registration fees will be charged four weeks after enrolment at 1.25 x fee).

Pearson reserves the right to make additional quality assurance visits (at the customer's cost), if the volume of late registrations is abnormally high.

Invoices

Registrations may be submitted through Edexcel Online or by EDI, JCQ or EDIFACT format. When making your registrations by Edexcel Online or EDIFACT EDI, you can supply an order number of up to 12 characters. This order number will be printed on the invoice to help you to reconcile the invoice with the registrations made. Please note that once an invoice has been produced you will no longer be able to add an order number. Pearson reserves the right to withhold certification if fees are outstanding at the time of despatch.

Fees due

The standard fees payable to Pearson for learners registering from 1 August 2023 are available on the website. Note: a learner cannot achieve more than one qualification per registration, unless registered on an approved Apprenticeships programme made up of two or more qualifications.

Refunds of BTEC registration fees

Programmes that follow the academic year

The registration fee for a BTEC learner, following an academic year registration, will not normally be refunded if he/she withdraws from the programme unless the registration is deleted on or before 31 January 2024. Any late fees incurred as part of this registration will not be refunded.

If we receive a request by 31 January 2024 to delete the registration, a refund of fees (as a credit note) will be issued.

You can process this deletion yourself on Edexcel Online on the Candidate Maintenance screen, or by submitting a JCQ format EDI amendment file by 31 January. You can also request this in writing by submitting a case via our [Support Portal](#).

Please note that we cannot refund registration fees if a learner has sat, or been marked absent for, any timetabled tests. If a learner has any pending test bookings, these must be withdrawn before a deletion request is made. Pending timetabled test bookings must be withdrawn by the high late fee date in order for a learner to be eligible for a refund.

Programmes that do not follow the academic year

Provided no units have been completed and no test bookings made we will accept a request for deletion, if we are notified via our [Support Portal](#) within two months of the date that we received the learner registration. For example, if a learner is registered on 1 March, we will accept a request for deletion up until 1 May. Please include the learner name and registration number in the email.

Deletions for Higher Nationals

Deletions for all Higher Nationals, regardless of whether your programme follows an academic year, must be made within 49 days of the student starting the programme of study (not from the date of registration). Any deletions made 50 days or more after the student's start date will not be eligible for a full refund.

Minimum spend threshold

There is an annual minimum spend requirement of £5,000 for all Pearson-approved UK colleges and work-based learning centres. Customers, who we believe may be impacted by this, will be notified at the start of the academic year. Shortly after the end of our financial year (31 August), an invoice will be raised for the difference between actual spend and the £5,000 threshold. Spend is calculated to include all purchases made between 1 September and 31 August and net of VAT.

New fees for 2023/24

Late claim

Pearson reserves the right to charge centres £100 for each learner registration for students who are expecting a Level 3 result in August 2024 where claims have not been made by 5 July deadline.

Quality and maladministration fee

Pearson will charge £400 per person per day for any remedial quality assurance visits required above what is currently offered. This charge will also apply when resolving maladministration issues.

Top-up fees and drop-down refunds for 2023/24

A top-up fee is charged when a learner who has completed a qualification and received a certificate wants to extend this to a larger qualification from the same specification.

Please note the below fees are calculated on the basis that both the initial and the top up registrations are processed in the 2023/24 price list year (1 August 2023 - 31 July 2024).

The BTEC National fees featured below are examples based on the fees charged for qualifications in the specified sectors. The equivalent fees for qualifications in other sectors may vary compared to those specified below.

BTEC Firsts, Nationals and Higher Nationals top up fees

Qualification Suite	Initial Product	Product Topped Up To	Initial Product Fee	Product Topped Up To Fee	Top-up Fee inc. Admin Fee
Firsts	BTEC Level 1/Level 2 First Award	BTEC Level 1/Level 2 First Certificate	£71.30	£122.05	£76.90
	BTEC Level 1/Level 2 First Award	BTEC Level 1/Level 2 First Diploma	£71.30	£174.15	£129.00
	BTEC Level 1/Level 2 First Certificate	BTEC Level 1/Level 2 First Diploma	£122.05	£174.15	£78.25
Nationals in IT and Computing	BTEC Level 3 National Certificate	BTEC Level 3 National Extended Certificate	£125.25	£175.30	£76.20
	BTEC Level 3 National Certificate	BTEC Level 3 National Foundation Diploma	£125.25	£202.00	£102.90
	BTEC Level 3 National Extended Certificate	BTEC Level 3 National Diploma	£175.30	£233.00	£83.85
	BTEC Level 3 National Foundation Diploma	BTEC Level 3 National Extended Diploma	£202.00	£262.95	£87.10
	BTEC Level 3 National Diploma	BTEC Level 3 National Extended Diploma	£233.00	£262.95	£56.10
Nationals in Applied Science	BTEC Level 3 National Certificate	BTEC Level 3 National Extended Certificate	£122.00	£174.60	£78.75
	BTEC Level 3 National Extended Certificate	BTEC Level 3 National Foundation Diploma	£174.60	£203.70	£55.25
	BTEC Level 3 National Extended Certificate	BTEC Level 3 National Diploma	£174.60	£233.40	£84.95
	BTEC Level 3 National Foundation Diploma	BTEC Level 3 National Extended Diploma	£203.70	£250.15	£72.60

Qualification Suite	Initial Product	Product Topped Up To	Initial Product Fee	Product Topped Up To Fee	Top-up Fee inc. Admin Fee
Nationals in Sport	BTEC Level 3 National Certificate	BTEC Level 3 National Extended Certificate	£125.40	£174.80	£75.55
	BTEC Level 3 National Extended Certificate	BTEC Level 3 National Diploma	£174.80	£231.25	£82.60
	BTEC Level 3 National Extended Certificate	BTEC Level 3 National Extended Diploma	£174.80	£251.15	£102.50
	BTEC Level 3 National Foundation Diploma	BTEC Level 3 National Extended Diploma	£194.55	£251.15	£82.75
Nationals in Uniformed Protective Services	BTEC Level 3 National Certificate	BTEC Level 3 National Extended Certificate	£118.65	£166.20	£73.70
	BTEC Level 3 National Extended Certificate	BTEC Level 3 National Diploma	£166.20	£219.90	£79.85
	BTEC Level 3 National Foundation Diploma	BTEC Level 3 National Diploma	£191.90	£219.90	£54.15
	BTEC Level 3 National Foundation Diploma	BTEC Level 3 National Extended Diploma	£191.90	£247.75	£82.00
Higher Nationals	BTEC Level 4 HNC	BTEC Level 5 HND	£253.75	£323.95	£96.35
	BTEC Level 4 HNC (HTQ)	BTEC Level 5 HND (HTQ)	£259.75	£374.05	£140.45

Drop-down Refunds

Pearson provides a refund to those centres who have had learners move to, and complete, a shorter BTEC qualification of the same subject and level. The refund due is calculated as the difference between the cost of the larger and smaller qualification, minus an administration fee of 50% of the difference. The administration fee is capped at £26.15.



BTEC Level 4 and Level 5 Higher Nationals Fees

BTEC Level 4 and 5 Higher National Student Registration (Higher Technical Qualification)

The BTEC registration fee is a once-only payment. The programme for which the learner registers and the type of registration determine the fee due.

BTEC Level 4 HNC	120 credits 480 GLH	£259.75
BTEC Level 5 HND	240 credits 960 GLH	£374.05
Learner registration*		£23.00

BTEC Level 4 and 5 Higher National Student Registration (RQF, QCF & SRF)

BTEC Level 4 HNC	120 credits 480 GLH	£253.75
BTEC Level 5 HND	240 credits 960 GLH	£323.95
Learner registration*		£23.00

* Will be chargeable for learners starting their second year of study, and annually for each subsequent year of study.

BTEC Level 4 and 5 HN Flex Units (Higher Technical Qualification)

HN Flex offers students flexibility to study individual, stackable units from BTEC Higher National qualifications. Students can study up to 4 RQF BTEC Higher National units as part of HN Flex. Then they have the opportunity to Top Up to a HNC after successful completion of the units, the price paid to top up will depend on how many units the student completes as part of HN Flex.

BTEC HN Flex per Unit	15 credits 60 GLH	£57.15
Top Up Fee - 1 Unit to HNC		£228.75
Top Up Fee - 2 Units to HNC		£171.60
Top Up Fee- 3 Units to HNC		£114.45
Top Up Fee - 4 Units to HNC		£57.30

BTEC Level 4 and 5 HN Flex Units (RQF)

BTEC HN Flex per Unit	15 credits 60 GLH	£47.50
Top Up Fee - 1 Unit to HNC		£232.40
Top Up Fee - 2 Units to HNC		£184.90
Top Up Fee- 3 Units to HNC		£137.40
Top Up Fee - 4 Units to HNC		£89.90

To offer HN Flex centres must be an approved Pearson BTEC centre and be approved to offer the programme.

Approval and verification

New Centre Approval	Price per Centre
BTEC new centre and approval and implementation¹	£1,000.00

BTEC Higher Nationals Programme Review and Approval (RQF and Commissioned HNs only)²	Price Per Programme
1 Auto approval	£117.00
2 Desk based review	£291.00
3 Existing centres that require a visit	£582.00

1. Applies to all new centres who wish to deliver any Pearson BTEC qualification (Level 1-7)
2. The PRA process has three routes to programme approval. If the centre does not meet the requirements of Auto Approval (1), a desktop review will be required (2). If a centre requires both auto and desktop approval, the maximum charge will be £291.00. If the requirements of desktop approval are not met an approval visit will be required (3) and only the visit fee is charged.

More information may be found in **Pearson BTEC Higher National Approval – Guidance** available on the **Pearson Qualifications website**

BTEC Level 1/Level 2 Tech Awards (from 2022): Internal and External Assessment Fees

Qualification registration fees cover the first 3 entries made for any internal or external assessments (either first sittings or retakes). Any further assessment entries will be charged an additional entry fee. Where the qualification consists of two units (Art and Design subject only), registration fee covers the first 2 entries.

Timetable for 2023/24

Series	Base data issued	Entry deadline	Late fees charged from	High late fees charged from
Dec-23/Jan-24	04/09/2023	17/10/2023	18/10/2023	18/11/2023
May/Jun-24	23/11/2023	21/02/2024*	22/02/2024	22/04/2024

	Initial fee	Late fee	High late fee	Extremely late fee
1st three entries (first sittings or retakes)	N/A	£11.90	£23.80	£35.70
Additional entries	£23.80	£35.70 (£23.80 + £11.90)	£47.60 (£23.80 + £23.80)	£59.50 (£23.80 + £35.70)
Art and Design - 1st two entries (first sittings or retakes)	N/A	£17.85	£35.70	£53.55
Art and Design - Additional entries	£35.70	£53.55 (£35.70 + £17.85)	£71.40 (£35.70 + £35.70)	£89.25 (£35.70 + £53.55)

Pearson will charge an Extremely Late fee for work submitted for a candidate who has not been formally entered by the centre before the day the external assessment takes place. Please note, these fees apply only to externally set timetabled exams.

* Learners who sat internal assessments in the December/January 2024 series can be re-entered for May/June assessments after results have been issued, and no late fees will be charged. The entry deadline for these learners is 29 March.

Late fees

After the entry deadline, late fees will be incurred. For late entries, the total fee is increased by 50%. For high late entries, the total fee is doubled, as shown in the table above. You will not incur a fee for changing candidate details (such as name amendments) unless a certificate has been issued.

On receipt of their results for the January 2024 units, students may decide that they would like to resit units in the May 2024 series. If so, you may enter the students for resits of units that they had entered and sat previously in January 2024.

Refunds

Any unit fee will be refunded automatically up to the high late fee date. If you withdraw an entry on or after this date, no refund will be issued without supporting medical evidence. If a late entry is withdrawn before the high late fee date, only the entry fee is refunded. For full details of external assessment entries, see the **Information Manual**.

These prices are accurate at the time of publication. Pearson reserves the right to alter its prices at any time, although every effort will be made to give centres prior notice of any alterations.

Please submit entries using EDI or Edexcel Online. Edexcel Online is available for use from the time that the base data is released for a particular examination series.

BTEC Level 1/Level 2 Tech Award in Engineering (2017)

Timetable for 2023/24

Series	Base data issued	Entry deadline	Late fees charged from	High late fees charged from
Feb-24	04/09/2023	17/10/2023	18/10/2023	18/11/2023
Jun-24	23/11/2023	22/03/2024*	23/03/2024	22/04/2024

External Assessment Fees

	Initial fee	Late fee	High late fee	Extremely late fee
1st attempt	N/A	£11.90	£23.80	£35.70
Resit	£23.80	£35.70 (£23.80 + £11.90)	£47.60 (£23.80 + £23.80)	£59.50 (£23.80 + £35.70)

Pearson will charge an Extremely Late fee for work submitted for a candidate who has not been formally entered by the centre before the day the external assessment takes place.

* Learners who sat BTEC assessments in the February 2024 series can be re-entered for June exams after February results have been issued, and no late fees will be charged. The entry deadline for these learners is 12 April.

BTEC Level 1/Level 2 Firsts: External Assessment Fees

BTEC First Awards, Certificates, Extended Certificates, Diplomas

Timetabled tests or set tasks

The first attempt at the external assessment(s) is included in the registration fee. You are required to enter learners into an exam series by a given deadline, after which late fees will be applied. Subsequent resits are charged at £19.48 per unit.

Timetable for 2023/24

Series	Base data issued	Entry deadline	Late fees charged from	High late fees charged from
Jan-24	04/09/2023	17/10/2023	18/10/2023	18/11/2023
Feb-24	04/09/2023	17/10/2023	18/10/2023	18/11/2023
Jun-24	23/11/2023	22/03/2024	23/03/2024	22/04/2024

	Initial fee	Late fee	High late fee	Extremely late fee
1st attempt	N/A	£9.74	£19.48	£29.22
Resit	£19.48	£29.22 (£19.48 + £9.74)	£38.96 (£19.48 + £19.48)	£48.70 (£19.48 + £29.22)

Pearson will charge an Extremely Late fee for work submitted for a candidate who has not been formally entered by the centre before the day the external assessment takes place.



Late fees (resit only)

After the entry deadline, late fees will be incurred. For late entries, the fee is increased by 50% (total £29.22). For high late entries, the fee is doubled (total £38.96). You will not incur a fee for changing candidate details (such as name amendments) unless a certificate has been issued.

Refunds

Any unit fee will be refunded automatically up to the high late fee date. If you withdraw an entry on or after this date, no refund will be issued without supporting medical evidence. If a late entry is withdrawn before the high late fee date, only the entry fee is refunded. For full details of external assessment entries, see the [Information Manual](#).

These prices are accurate at the time of publication. Pearson reserves the right to alter its prices at any time, although every effort will be made to give centres prior notice of any alterations.

Learners who sat BTEC assessments in the January 2024 series can be re-entered for June exams after January results have been issued, and no late fees will be charged. The entry deadline for these learners is 29 March.

Learners who sat BTEC assessments in the February 2024 series can be re-entered for June exams after February results have been issued, and no late fees will be charged. The entry deadline for these learners is 12 April.

Please submit entries using EDI or Edexcel Online. Edexcel Online is available for use from the time that the base data is released for a particular examination series.

Onscreen, on-demand tests

The first attempt at the external assessment(s) is included in the registration fee.

Test bookings should be made in advance of the test being sat. Test bookings can be made with two hours notice. There are no late fees as onscreen on-demand tests do not require the same logistical administration (question paper printing, despatch, etc.). If a booking is made for a learner and they do not attend the test (they are marked as absent) there is no resit charge made to the centre. If a first sitting is marked absent, any subsequent entry on the same registration would be considered the first sitting.

Subsequent resits are charged at £19.48 per unit.

Onscreen, on demand tests	Standard Entry fee
1st attempt	N/A
Resit	£19.48

For full details of external assessment entries, see the [Information Manual](#).

BTEC Level 2 Technicals: External Assessment Fees

BTEC Level 2 Technical Certificates and Diplomas

Timetabled tests or set tasks

The first attempt at the external assessment(s) is included in the registration fee. You are required to enter learners into an exam series by a given deadline, after which late fees will be applied. A subsequent resit is charged at £32.50 per unit.

Timetable for 2023/24

Series	Base data issued	Entry deadline	Late fees charged from	High late fees charged from
Mar-24	04/09/2023	16/01/2024	17/01/2024	15/02/2024
Jun-24	23/11/2023	22/03/2024	23/03/2024	22/04/2024

	Initial fee	Late fee	High late fee	Extremely late fee
1st attempt	N/A	£16.25	£32.50	£48.75
Resit	£32.50	£48.75 (£32.50 + £16.25)	£65.00 (£32.50 + £32.50)	£81.25 (£32.50 + £48.75)

Pearson will charge an Extremely Late fee for work submitted for a candidate who has not been formally entered by the centre before the day the external assessment takes place.



Late fees (resit only)

After the entry deadline, late fees will be incurred. For late entries, the fee is increased by 50% (total £48.75). For high late entries, the fee is doubled (total £65.00). You will not incur a fee for changing candidate details (such as name amendments) unless a certificate has been issued.

Refunds

Any unit fee will be refunded automatically up to the high late fee date. If you withdraw an entry on or after this date, no refund will be issued without supporting medical evidence. If a late entry is withdrawn before the high late fee date, only the entry fee is refunded. For full details of external assessment entries, see the [Information Manual](#).

These prices are accurate at the time of publication. Pearson reserves the right to alter its prices at any time, although every effort will be made to give centres prior notice of any alterations.

On receipt of their results for the March 2024 units, Animal Care, CPLD and Digital Technology, students may decide that they would like to resit units in the June 2024 series. If so, you may enter the students for resits of units that they had entered and sat previously in March 2024.

Learners who sat BTEC assessments in the March 2024 series can be re-entered for June exams after March results have been issued, and no late fees will be charged. The entry deadline for these learners is 3 May.

Please submit entries using EDI or Edexcel Online. Edexcel Online is available for use from the time that the base data is released for a particular examination series.

Onscreen, on-demand tests

The first attempt at the external assessment(s) is included in the registration fee.

Test bookings should be made in advance of the test being sat. Test bookings can be made with two hours notice. There are no late fees as onscreen on-demand tests do not require the same logistical administration (question paper printing, despatch, etc.). If a booking is made for a learner and they do not attend the test (they are marked as absent) there is no resit charge made to the centre. If a first sitting is marked absent, any subsequent entry on the same registration would be considered the first sitting.

Subsequent resit is charged at £32.50 per unit.

Onscreen, on demand tests	Standard Entry fee
1st attempt	N/A
Resit	£32.50

For full details of external assessment entries, see the [Information Manual](#).

BTEC Level 3 Nationals: External Assessment Fees

BTEC Level 3 National Certificates, Extended Certificates, Foundation Diplomas, Diplomas and Extended Diplomas

Timetabled tests or set tasks

The first attempt at the external assessment(s) is included in the registration fee. You are required to enter learners into an exam series by a given deadline, after which late fees will be applied. Subsequent resits are charged at £40.94.

Timetable for 2023/24

Series	Base data issued	Entry deadline	Late fees charged from	High late fees charged from
Jan-24	04/09/2023	17/10/2023	18/10/2023	18/11/2023
Jun-24	23/11/2023	22/03/2024	23/03/2024	22/04/2024

	Initial fee	Late fee	High late fee	Extremely late fee
1st attempt	N/A	£20.47	£40.94	£61.41
Resit	£40.94	£61.41 (£40.94 + £20.47)	£81.88 (£40.94 + £40.94)	£102.35 (£40.94 + £61.41)

Pearson will charge an Extremely Late fee for work submitted for a candidate who has not been formally entered by the centre before the day the external assessment takes place.



Late fees (resit only)

After the entry deadline, late fees will be incurred. For late entries, the fee is increased by 50% (total £61.41). For high late entries, the fee is doubled (total £81.88). You will not incur a fee for changing candidate details (such as name amendments) unless a certificate has been issued.

Refunds

Any unit fee will be refunded automatically until the day before the high late fee date. If you withdraw an entry on or after this date, no refund will be issued without supporting medical evidence. If a late entry is withdrawn before the high late fee date, only the entry fee is refunded. If a free first entry is not withdrawn and a learner is just marked as absent on the day, for fee purposes the next entry is treated as a resit and they will be charged as such, for assessment purposes however, the learner would still have their two resit attempts. For full details of external assessment entries, see the [Information Manual](#).

Learners who sat BTEC assessments in the January 2024 series can be re-entered for June exams after January results have been issued, and no late fees will be charged. The entry deadline for these learners is 29 March.

These prices are accurate at the time of publication. Pearson reserves the right to alter its prices at any time, although every effort will be made to give centres prior notice of any alterations.



FAQs and centre fees

These apply to all vocational Pearson Edexcel and Pearson BTEC qualifications.

Are these fees final?

Fees are not likely to change during the period covered by this document (August 2023 – July 2024).

As new products are launched the Vocational Qualifications Fee Finder will be updated. Please check our website for the latest updates.

Where can late fees be found?

You'll find our late fee charges on the [vocational fees page](#). The deadlines are clearly presented in the [Information Manual](#) and Exams Officers Update and reminder emails.

What are top-up fees?

A top-up fee is the price difference between a smaller and a larger qualification plus a small administration fee. You'll find our top up fees on the [vocational fees page](#).

What to do in the event of transfers?

A transfer is where the learner transfers their registration from one qualification to another before they have been certificated for the original qualification. No additional fee will be due where the fee for the new programme at the time of registration is the same as that paid for the original registration. Where the fee for the new programme is higher than that paid for the original registration, an invoice for the difference between the two fees will be issued.

What are drop-downs refunds?

Where a learner is unlikely to complete the necessary units to gain certification in the programme they are registered on, they may be able to 'drop-down' via a transfer to a smaller programme in the same specification. When this happens, a credit (refund) is normally due, minus an administration fee. The refund due is calculated as the difference between the cost of the larger and smaller qualification, minus an administration fee of 50% of the difference between the two. This administration fee is capped at £26.15. Please note a refund is not due when the drop down is to a qualification outside the same specification.

New centres approval fee

Who does the new centres approval fee apply to?

New WBL centres and colleges delivering Pearson vocational qualifications for the first time are subject to a fee of £1,000 – this does not apply to schools. Failure to pay this fee may result in withdrawal of approval.

What happens if the centre doesn't pay the new centre approval fee?

Unless the approval fee is paid, the centre will not be able to make registrations or claim certification.

Minimum spend threshold

Does Pearson have a minimum spend requirement?

There is an annual minimum spend requirement of £5,000 for all Pearson-approved UK colleges and work-based learning centres. Customers, who we believe may be impacted by this, will be notified at the start of the academic year. Shortly after the end of our financial year (31 August), an invoice will be raised for the difference between actual spend and the £5,000 threshold. Spend is calculated to include all purchases made between 1 September and 31 August and net of VAT.





Thank you

We would like to thank you and your colleagues for the incredible work that you continue to do to support your students and enable them to be ready for their assessments. We will continue to listen to your feedback and work with you to ensure that you and your students have the best possible experience with us.