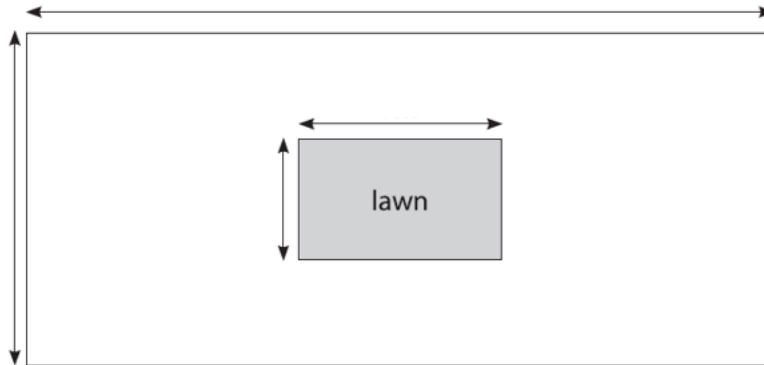


## Pearson Functional Skills Maths | Level 1 | Numberless Problem-Solving Area, Perimeter and Volume Worksheet

### Question 1

Alfie sells flooring for playgrounds.

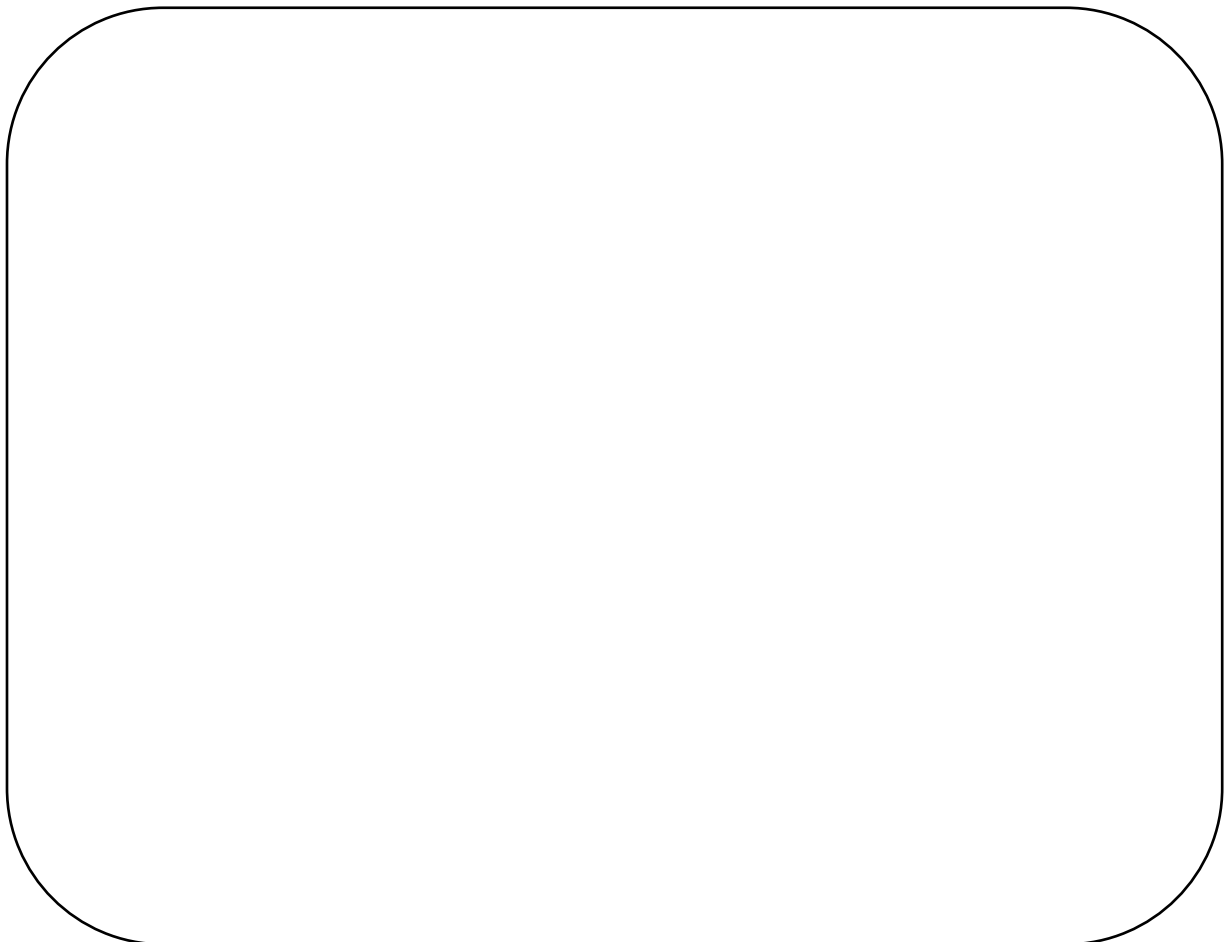
He has this diagram of a playground.



Alfie will put flooring on all the space inside the playground but not on the lawn.

He knows how much the flooring costs per square metre.

How does he work out the total cost of the flooring?



**Question 2**

Ali is preparing for a race.

She runs laps around the football pitch to prepare for the race.



The length of each lap is the total distance along the four edges of the pitch.

Ali wants to run a certain distance.

How does she work out how many laps she has to run to reach this distance?

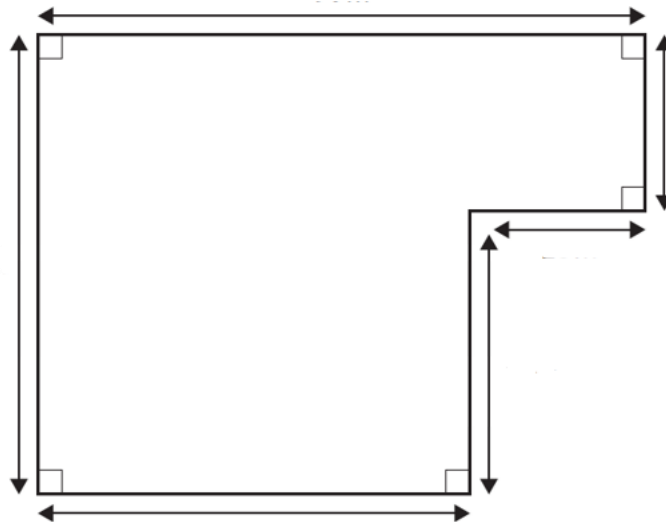


**Question 3**

George is a farmer.

He is going to put water piping along all the edges of his field.

He has this sketch of the field.



George knows how much the piping costs per metre.

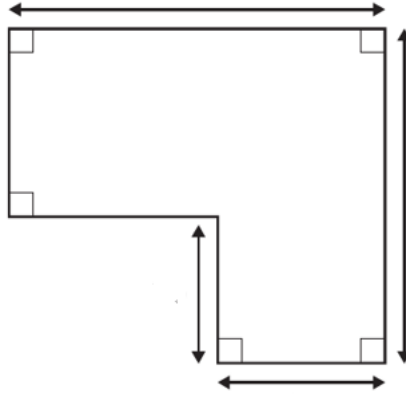
How does he work out how much it will cost to put piping around the field?



**Question 4**

Hamid is a gardener.

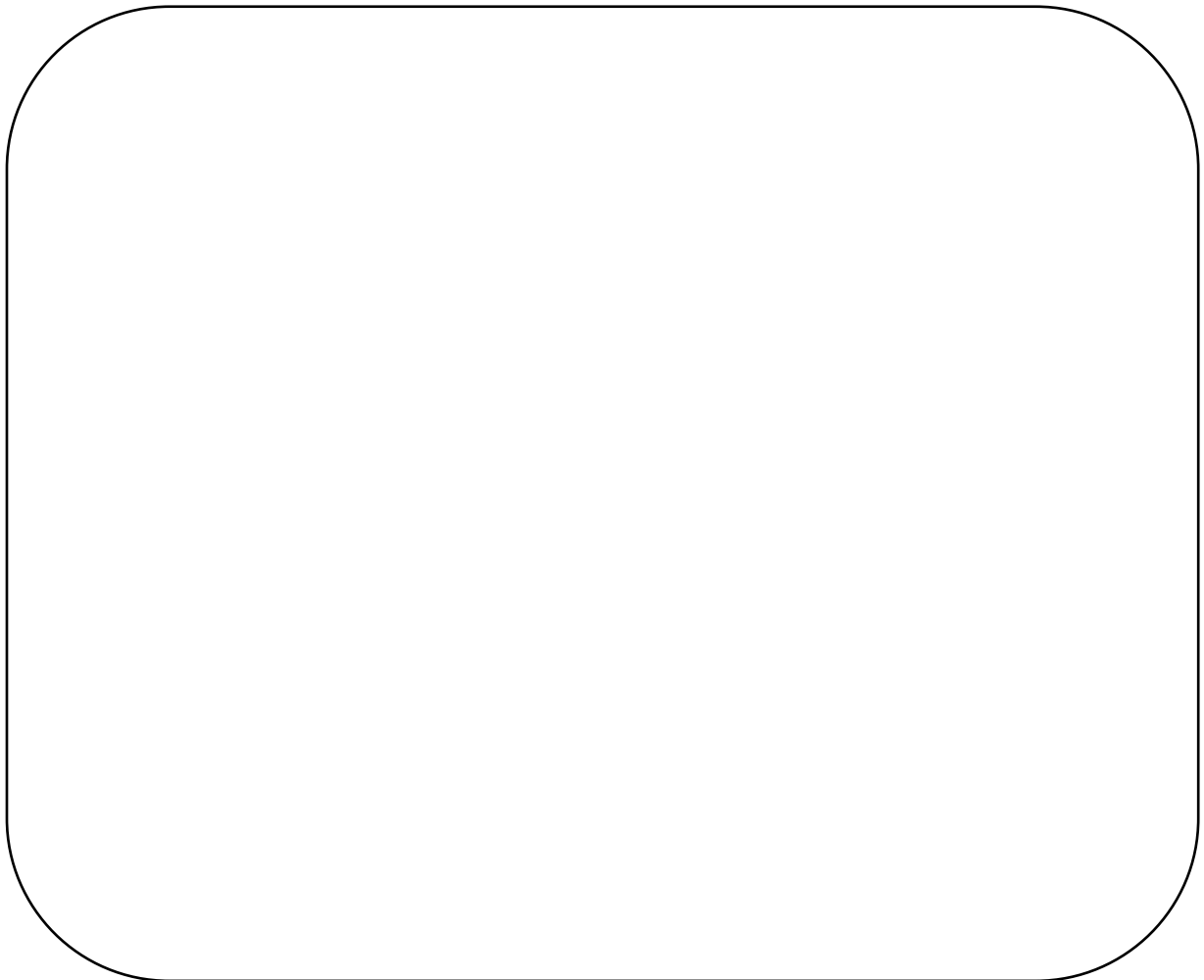
He has this plan of a garden.



Hamid needs to lay grass turf to cover this garden.

He knows how much he charges to lay a square metre.

How does he work out how much to charge for laying the grass turf?



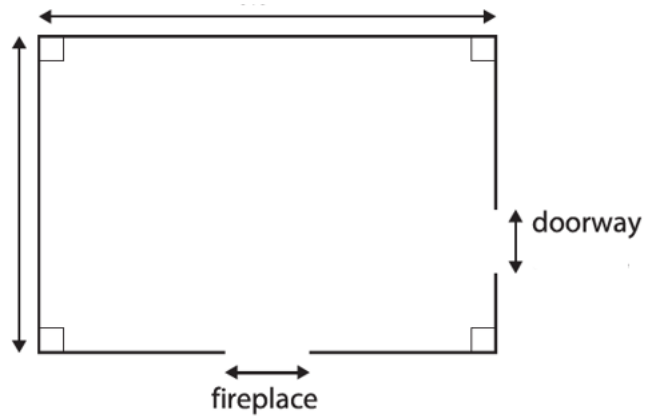
### Question 5

Grace wants new skirting boards in her living room.

The skirting boards will

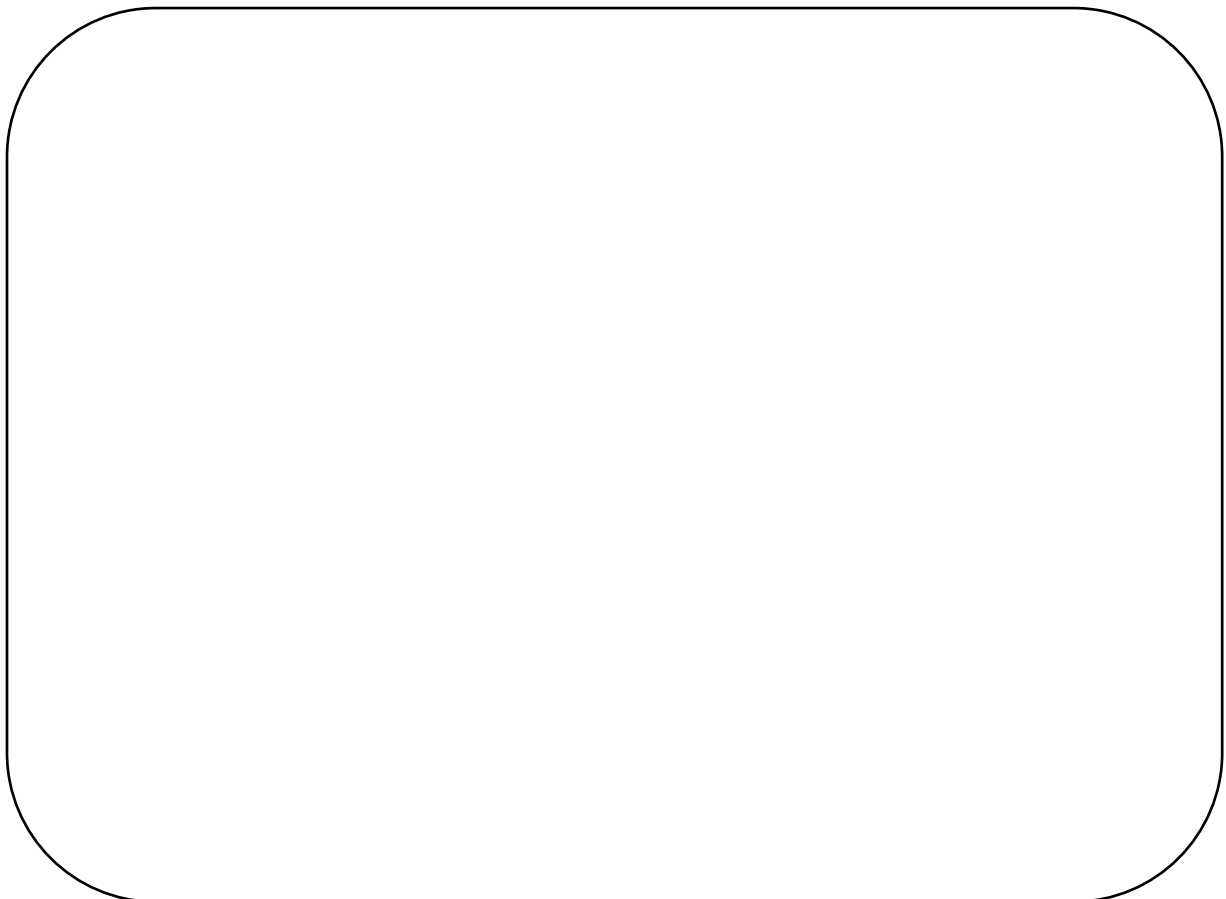
- Go along the bottom of each wall
- Not go across the doorway
- Not go across the fireplace

Grace has this sketch of her living room.



Grace knows that skirting boards come in a set length and that they can be cut and joined.

How can she work out how many skirting boards she needs to buy?

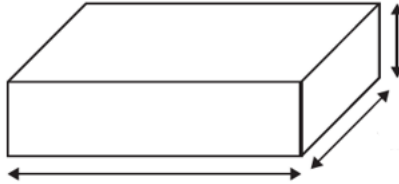


**Question 6**

Gosia needs a container to put in her freezer.

She sees this container.

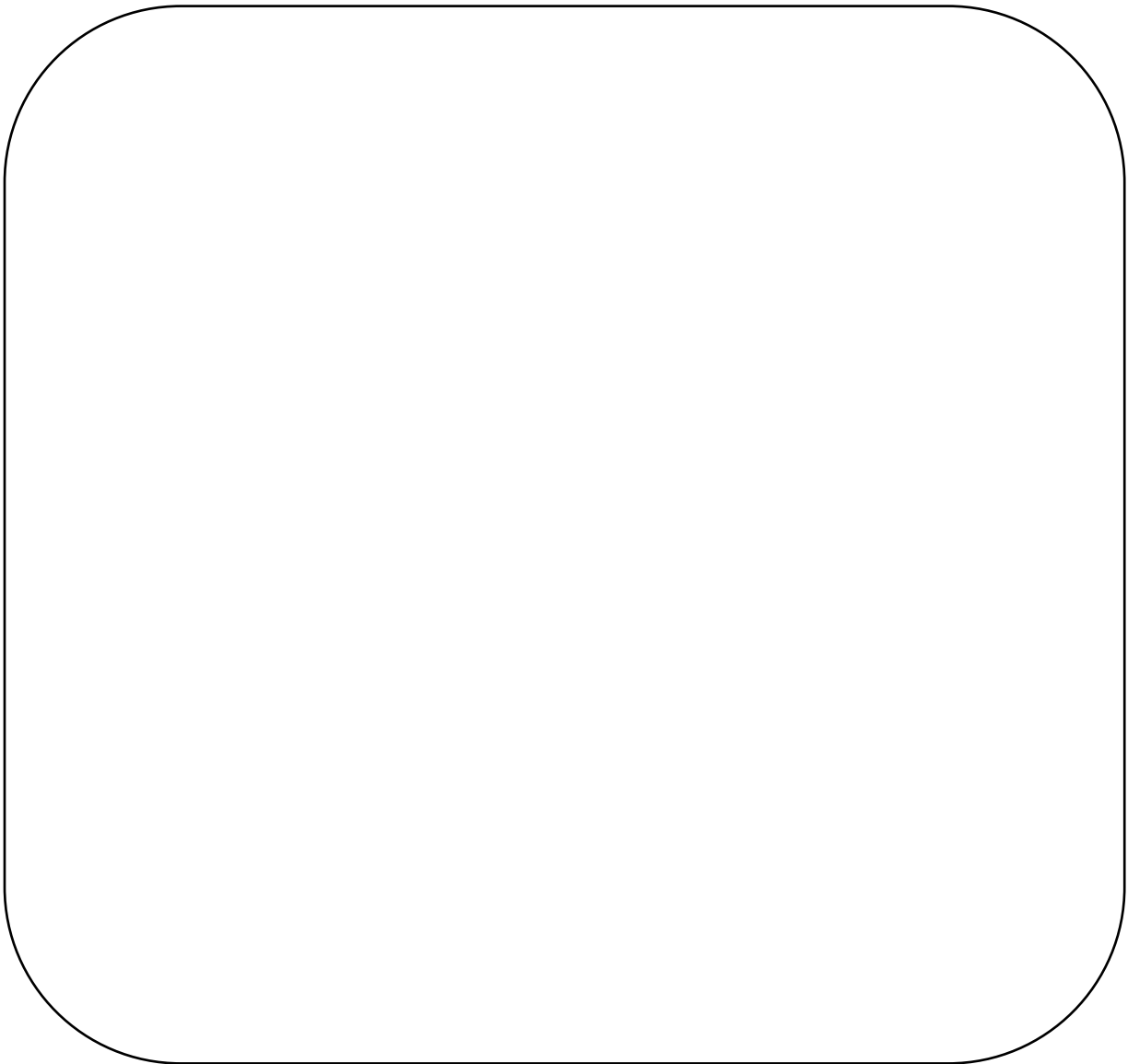
The container is in the shape of a cuboid.



Gosia knows the following formula

$$1000 \text{ cm}^3 = 1 \text{ litre.}$$

How can Gosia work out how many litres the container holds?

A large, empty rounded rectangular box with a thin black border, intended for the student to write their answer to the question.

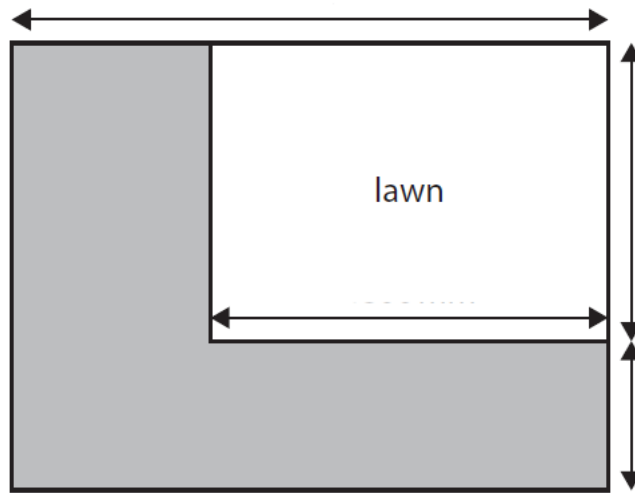
**Question 7**

Maninder wants to put slabs in part of her garden.

She has this sketch.

All the angles are right angles.

She knows the length of each square slab.



**Key**  space for slabs

How does she work out how many slabs she will need?

